

Easy-To-Use, Riding Mower Deck Washer

Retired engineer John Sorenson figured there had to be a better way to clean fresh grass from mower decks. His Empire Deck Washer uses the force of the mower blades to help clean the deck.

"The rotating blades create a vortex that starts about halfway down the blades and moves up toward the deck and out," explains Sorenson. "By the time it reaches the outside, it has multiplied its force many times."

Simply injecting water under the deck was not enough. Sorenson found that water injected at a 45 degree angle from below is ideal. "The water hits the mower deck like a pressure washer," he says.

"When done mowing, simply drive the mower to the washing area, raise the deck to the highest position and shut off the engine. Slide the washer connected to a garden hose under the deck," explains Sorenson. "It should slide all the way to the opposite side. The washer can handle mowers from 32 in. to 60 in. One fellow with a 76-in. deck cleans one

half at a time."

To clean the deck, turn on the water and then turn on the mower, says Sorenson. Run blades at top speed for maximum vortex and cleaning power. "The important thing with mowers is to clean them every time, before the damp clippings can harden."

The Empire Deck Washer is made out of ABS plastic that won't warp, bend, crack or deteriorate and comes with instructions. Suggested retail price for the washer is \$19.50. It's available direct from Empire Products as well as through various Ace Hardware stores. "The device will not strike the spinning blades due to the reverse force of the water pressure exiting the cleaning nozzles, thus holding it down."

Contact: FARM SHOW Followup,



To clean the deck, you connect the washer to a garden hose and slide it all the way under the deck. Then you turn on the water and also turn on the mower.

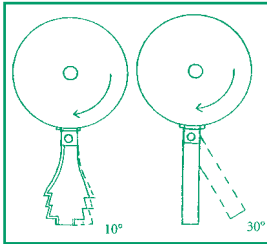
Empire Products, W5901 Spooner Lake Road, Spooner, Wis. 54801 (ph 715 635-8197; fax 715 635-9161; empire05@centurytel.net; www.empirewasher.com).

Reader Inquiry No. 168

Performance-Boosting Combine Products

Deere Chopper Knives - If you're not satisfied with the job done by the straw chopper on your Deere combine, contact Robert Rottinghaus.

Rottinghaus, owner of Clever Tech, Inc., Jesup, Iowa, says the rotor knives on Deere straw choppers aren't heavy enough



Deere Chopper Knives

to handle heavy straw or wet, green bean stems. "Many modern soybean varieties produce dry beans on green stems, which can cause problems for combines and straw choppers. Since the original knives in the Deere chopper pivot back about 30 degrees, when they hit this tough material they let it pass over the stationary knives uncut," he says.



To solve the problem, he developed a heavier knife that will fit most Deere straw

choppers. Made of grade 80 steel that's been laser cut, the Clever Tech knife has four sharp rake teeth on it, to make a serrated edge. It's designed to pivot only 10 degrees, so it forces material through the stationary knives until everything is cut.

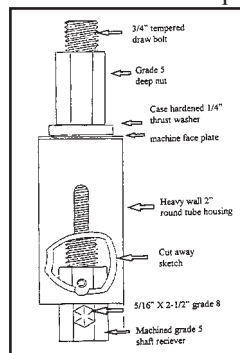
Rottinghaus' combine straw chopper knives sell for \$7.87 each (plus S&H), depending on the model. All knives are weighed and balanced before shipping.

Reader Inquiry No.174

Stalk Roll Bearing Puller For Case IH 1000 Cornheads - Save time with this unique

puller for stalk roll bearings on 1000 Series Case IH corn heads. Powder-coated with red Case IH paint, it has a heavy-duty puller cage.

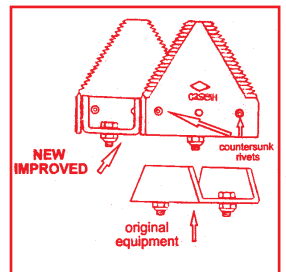
Sells for \$104 for Jesup, Iowa. Weighs 3 lbs. Comes with a 2-year warranty.



Reader Inquiry No. 175

Straw Chopper Knife Kit - Gives versatile unmatched chopping capability on Case-IH

combines. Cuts the straw and stubble shorter which turns to mulch quicker for faster available plant food and nutrients for the next crop. Sells for \$133 plus S&H.



IH Chopper Knives

Reader Inquiry No.176

Contact: FARM SHOW Followup, Clever-Tech, Inc., 4121 South Canfield Road, Jesup, Iowa 50648 (ph 319 827-1311; fax 2425).