



New bale hauler-feeder grabs the ends of bale with overhead "squeeze arms". It's available in 1 to 5-bale models. Feeder panels can be removed when not needed.

Bale Hauler, Feeder

New-style tow-behind bale mover features hydraulic-powered "squeeze arms" that lift bales without poking holes in them. That makes it ideal for handling plastic-wrapped silage bales that might otherwise get torn apart by a bale spear.

The "Bale Master" bale hauler is also unique in that it can be fitted with side racks to double as a bale feeder. The hydraulic-powered bale handler is available in 1 to 5-bale models and can be powered by an electric-over-hydraulic motor mounted on the trailer or in the back of a pickup, or you can hook it up directly to the tractor's hy-

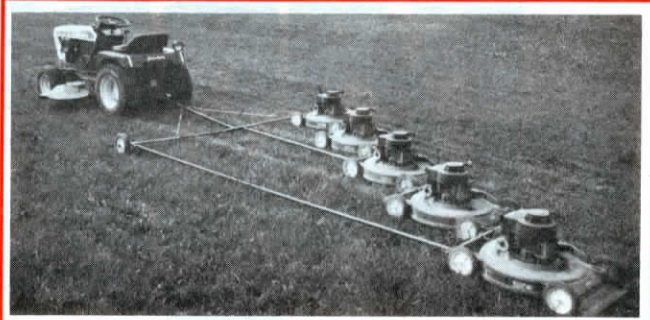
draulic outlets. "You can haul up to five bales at a time and do all the loading, hauling, and unloading yourself without leaving the pickup cab or the seat of your tractor," says Burl Beaulieu, inventor. "I've moved up to 100 bales in eight hours going three miles round trip using my pickup. Even our 3-bale mover can be pulled behind a 3/4-ton pickup, although the 4- and 5-bale models have to be pulled by a tractor. It accommodates any round bale size."

The one-bale Bale Master is equipped with three hydraulic cylinders. One cylinder opens and closes the squeeze arms, and the other two cylinders raise and lower the frame. On hillsides the arms automatically center the bale so you can pick it up perfectly level.

Trailers range in length from 12 ft. for one bale to 36 ft. for five bales. All models can be fitted with feeder panels.

Trailer prices range from \$2,300 for a one-bale model to \$8,395 for a 5-bale model.

For more information, contact: FARM SHOW Followup, B & B Mfg., Inc., 342 E. 5th St., Red Wing, Minn. 55066 (ph 612 388-9111).



5-Mower Hitch Cuts 4 Acres/Hr.

You can put together an inexpensive 8-ft. wide mower using five 20-in. push mowers, says Patrick Case, Pioneer, Ohio, who priced wide mowers that cost thousands of dollars before getting the idea of ganging 5 mowers together with a single pull-type hitch.

Case needed a big mower to mow a field that he uses for his hobby of flying remote-controlled model airplanes. "I can mow 3 1/2 to 4 acres in 2 hrs. and use less than 5 gal. of gas. It's fun to use and easy to pull with a non-mowing Simplicity garden tractor," he says.

Case came up with a simple hitch that leaves the mowers free to "float" over uneven terrain. He drilled four holes in each mower, one in each corner, and inserted a 3/8 by 4-in. long eye bolt in each hole. A 1/2-in. dia. steel bar runs through each set

of eye bolts, connecting the front of one mower with the back of the mower ahead of it. Cotter pins hold the bar in place. The bar on the front mower runs across the full 8-ft. width and is connected to a pair of pull bars that run back to the middle and rear most mowers. To remove the mowers from the hitch, all Case has to do is remove the pins, slip the bars out and the mowers are ready for storage or to use as push-type mowers again.

"It misses some grass on sharp corners. Otherwise, I've had no problems. There's nothing like it on the market for the money," says Case, who spent \$650 using all new 20-in. "Pro Hardware" mowers.

Contact: FARM SHOW Followup, Patrick Case, 14630 N-65, Pioneer, Ohio 43554 (ph 419 485-5251).



Vol. 13, No. 5, 1989

Publisher and Editorial Director - Harold M. Johnson
Editor - Mark Newhall
Associate Editor - Bill Gergen
Office Manager - Joan C. Johnson

FARM SHOW is published bimonthly for \$11.95 per year (\$14.95 in Canada and foreign countries) by Farm Show Publishing Inc., P.O. Box 1029, 20088 Kenwood Trail, Lakeville, Minn. 55044. Second class postage paid at Lakeville, Minn., and Madelia, Minn. POSTMASTER: Send address changes to FARM SHOW, Box 1029, Lakeville, Minn. 55044 (ph 612-469-5572). Single copy price is \$2.00 (\$2.50 Canada). Publication No. 470870

FARM SHOW does not accept advertising and focuses exclusively on new products and product evaluations.

FARM SHOW does not charge for new products or services featured in the magazine. Anyone with a new product or service of interest to farmers - whether inventor, manufacturer, marketer, distributor or whatever - is invited to contact FARM SHOW regarding possible publication.

AS A SERVICE TO READERS, Farm Show publishes newsworthy products and ideas. Because of possible variance in the quality and condition of materials and workmanship, Farm Show cannot assume responsibility for proper application of techniques, or proper and safe functioning of manufactured or reader-built projects resulting from information published in this magazine. Farm Show attempts to verify product claims in editorial reports and adheres to rigid standards. However, the publisher assumes no liability for accuracy and validity of claims.

Printed in U.S.A. All rights reserved, including the right of reproduction, in whole or in part, without written permission.

September-October, 1989

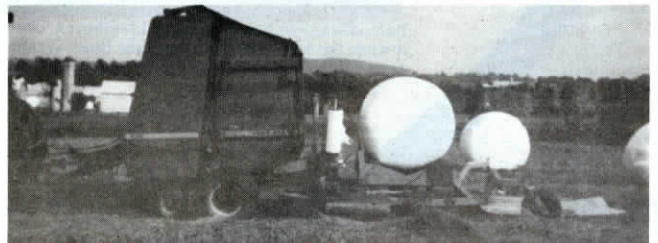
"On-The-Go" Bale Wrap Machine

(Continued From Cover Page)

at a 45° angle. The baler discharges the bale onto the turntable. As the baler operator closes the tailgate and starts making the next bale the operator of the bale wrap machine pushes one lever to level the turntable and another lever to rotate the turntable to begin the wrapping process. The bale is simultaneously turned on both its horizontal and vertical axis so that the stretch plastic overlaps and evenly covers the entire bale. A clamp arm automatically cuts off the end of the plastic and holds it for the next bale. A finished bale is covered with up to 6 layers of plastic.

Once the bale is wrapped, the operator tilts the turntable 45° backward. The bale falls onto a 5-ft. wide, 6-ft. long section of canvas that's bolted behind the bale wrap machine and drags along the ground. The bale is pulled along on the canvas for a short distance, and then it rolls off. The weight of the bale on the canvas flattens out the stubble to keep it from penetrating the plastic.

"Keeping the bale wrap machine's frame



Zimmerman pulls his baler and bale wrap machine with a 150 hp. tractor.

low enough to fit under the baler was the biggest challenge," notes Zimmerman. "There's only 10 inches of clearance under the baler. The middle of the machine scuffs the ground when we go over ditches and banks but it doesn't hurt anything."

Zimmerman welded a clevis onto each end of the baler's axle, and welded a hitch to each side of the bale wrap machine's frame. To hook up to the bale wrap machine he simply drops a pin through each clevis. "We usually bale and wrap, but if the farmer has his own baler and wants us only to wrap bales, we can pull the bale wrap machine

behind a tractor and use it like any other stationary model," notes Zimmerman.

Zimmerman pulls his baler and bale wrap machine with a 150 hp Deere 4630 tractor which he says has no trouble handling the extra weight of the bale wrap machine. He charges about \$10 to wrap one 5 by 4-ft. bale. "There's about \$5 worth of plastic alone on each bale," notes Zimmerman.

For more information, contact: FARM SHOW Followup, Lewis Zimmerman, Box 192, East Earl, Penn. 17519 (ph 215 445-6851).