



Scale model of "Superwagon" shows fold-down unloading auger fitted with feed-out spout for feeding into bunks.

FITTED WITH A RUBBER BELTED CONVEYOR

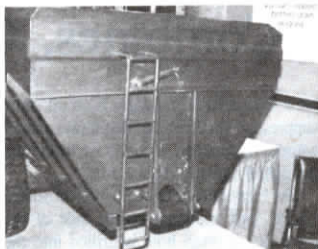
Power-Unload Wagon Works Year 'Round

New "power-unload" wagon equipped with a hydraulic-driven rubber belt conveyor that runs forward or back can be used as a grain cart, fertilizer spreader, feed wagon, or drill fill, according to Super S Mfg., Carman, Manitoba.

The "Superwagon 600" holds 600 bu. It's equipped with 13-in. dia. pto-driven unloading auger in front and orbital motors front and rear which power the 16-in. wide conveyor at the bottom of the wagon.

"It's much more versatile than any other grain cart on the market because it's got so many uses," says Tony Suderman, sales representative. "By running the conveyor in reverse and adding an optional spinner spreader attachment at the rear you can use it to spread fertilizer. An optional two-compartment divider lets you use one part of the tank for fertilizer and the other part for grain when you use it as a drill fill. By folding down the top portion of the auger and inserting an unloading spout you can use it as a feed wagon. The tank is designed in such a way that even 34% moisture corn won't hang up inside like it would on other carts. The augers on other grain carts never completely clean out the bottom of the tank, but our belt conveyor offers complete clean-out."

Each compartment is equipped with a hydraulically-operated gate controlled from



Rubber-belted conveyor at bottom of wagon feeds out back or can be reversed to feed front-mounted unloading auger. the tractor cab. A hydraulically-operated lift gate at the rear offers easy and accurate flow control. Unloading time is only about 2 minutes. The cart is equipped with large 24.5 by 32 12-ply tires and requires a 160 to 180 hp tractor.

Sells for \$15,800. The optional two-compartment divider sells for \$965 and the fertilizer spreader for \$3,700. A roll-up tarp cover sells for \$1,265 and a tank extension that increases capacity by 100 bu. sells for \$680.

Also available are 200 and 375 bu. models.

For more information, contact: FARM SHOW Followup, Super S Mfg., Box 279, Carman, Manitoba, Canada R0G 0J0 (ph 204 745-6461).

ARMS OFF EITHER END OF BOOM EXTEND AUTOMATICALLY AT END OF FIELD

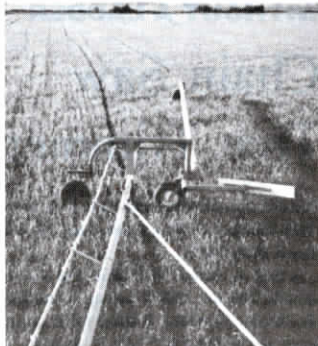
"Crazy Wheel" Marker Keeps Sprayers In Line

"I wanted an exact line to follow when spraying," says Ray Vogt, Steinbach, Manitoba, who came up with a "crazy wheel" spray marker that's like nothing else on the market.

"Even if you have a foam marker you have to guess where to drive the tractor by watching the end of the boom. I didn't like the skip marks and overlaps I got. If I calibrate the sprayer to apply 10 gal. per acre, that's what I want to apply," says Steinbach.

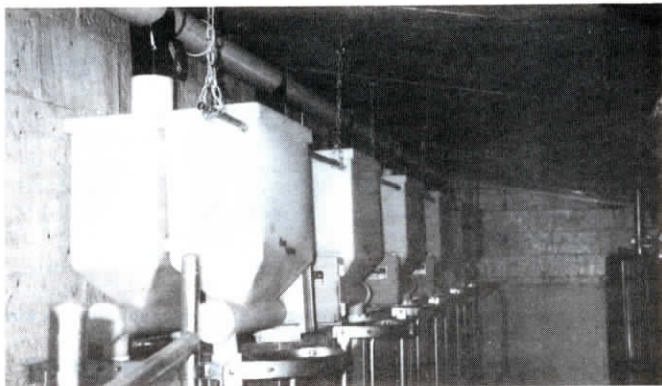
His marker consists of a "crazy" wheel, or castor, mounted on the end of a light-weight 4-in. dia. marker arm made out of aluminum irrigation pipe. A marker arm and wheel mounts on either end of the spray boom on a flexible hinge. Each arm is long enough to run from the end of the boom to the center point on the tractor.

Here's how the marker works. On each



"Crazy Wheel" mounts on heavy 2-wheel frame at end of boom.

pass, one marker arm is folded in front of the spray boom and the other is in the extended position. When Vogt turns at the end of the



Each individual feeding station consists of a 50-lb. poly tank fitted with an electric gear motor and short length of flex auger.

"No Mess" Feeder For Milking Parlors

Feeding supplements to high-producing dairy cows is a clean and easy job with a new automatic feeder developed by one of Ohio's top dairymen who says he was tired of the dust and mess of other parlor feeders.

Tim Gerber has teamed up with engineer Kent Leininger, both of Jackson Center, to manufacture and sell the dairy feeder he first developed for his own operation.

"Most dairymen have been reluctant to feed cows in parlor because of the dust created. Our supplement feeder uses pelleted supplements or other 'clean' feeds such as roasted beans, fat packs, stress packs, and so on," says Gerber, noting that the system can also be used to automate feeding in stanchion barns and tie stalls as well as on hog farrowing crates. And it'll also feed regular grind and mix feeds.

Amounts fed to high producers are small since protein content of supplements is high. "In my herd, cows milking 120 lbs. per day receive 3 lbs. per milking of a 38% protein

pellet with a 3% fat content. They can eat that amount quickly without slowing milking time or leaving any in the feeder," says Gerber, whose herd of 45 averages more than 22,000 lbs. per year.

The Accu-Feeder consists of a flex auger which is direct-driven by an electric gear-motor, both of which mount on a 50-lb. capacity polyethylene tank. Installing the self-contained Accu-Feeder doesn't require any structural modification to the barn, unlike other in-parlor feeding systems. You just wire the feeding units up to brains of the system, which are solid state timers contained in a single control panel. Each individual feeding station has its own control switch. Can be set up with multi-feeding periods (up to 48 per day) for tie-stalls.

Sells for \$152 per feeder station. Control panels start at \$286.

Contact: FARM SHOW Followup, Gerlein Concepts, 19374 Linker Road, Jackson Center, Ohio 45334 (ph 513 596-6464).

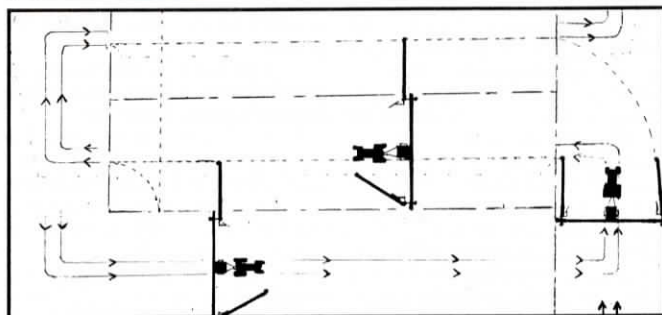


Diagram shows how markers on each end of boom fold in or out by themselves as turn is made at end of field.

field, the extended arm automatically folds in and the folded-in arm is extended. There are no hydraulics or electrical controls. The fold in, fold out action is activated by the turning of the tractor. Mechanical "stops" hold the boom in place when it's in either position.

When he starts spraying, Vogt first makes one pass around the perimeter of a field with the outside marker locked in. Then he starts his first pass over the field. As he gets to the end of the pass, he turns towards the side where the folded-out marker has left its tire track. As he turns, the hinge causes the marker to fold in against a stop while at the same time the turning action causes the folded-in marker to fold out. He aims the inside tractor wheel along the mark left by the marker wheel.

"You don't even have to think about it. There's an easy mark to follow with the tractor. I've totally eliminated skips and overlaps. It's fool-proof," says Vogt. He notes that the aluminum tubing works great for the marker because it's both light and strong.

"I built the marker during the winter of 1988-89 and used it last year with no problems. The only change I made after I built it was to add fluid to the crazy wheels for added weight to make the tire tracks more visible. The only cost was for two wheelbarrow wheels, 2 used sections of pipe, and some scrap metal for hinges," says Vogt.

Contact: FARM SHOW Followup, Ray Vogt, Box 1775, Steinbach, Manitoba, R0A 2A0 Canada (ph 204 326-9429).