

**60 PERCENT MORE CAPACITY
THAN SINGLE-TIE BALERS**

New "Eject-On-The-Go" Non-Stop Round Baler

The first eject-on-the-go continuous round baler in North America is being tested by farmers throughout the U.S. and Canada and is scheduled to be marketed next year.

You never have to stop with the new RP1211C baler developed by Vicon Manufacturing, Inc. It starts to form a new bale in a secondary chamber while the previous bale is wrapped in netting and ejected.

"It makes 4 by 5-ft. soft core bales weighing up to 1,200 lbs. It'll make as many as 40 bales per hour compared to 25 bales for the average single-tie baler, more than a 60% increase," says Lyle Switzer, Vicon North American product manager. "It's easier on the tractor because you never have to stop to tie or eject a bale and it also reduces operator fatigue."

The new baler is already in its third year of testing. Vicon has 15 prototypes in North America and 15 in Europe. The baler is expected to sell for about \$23,000 in the U.S.

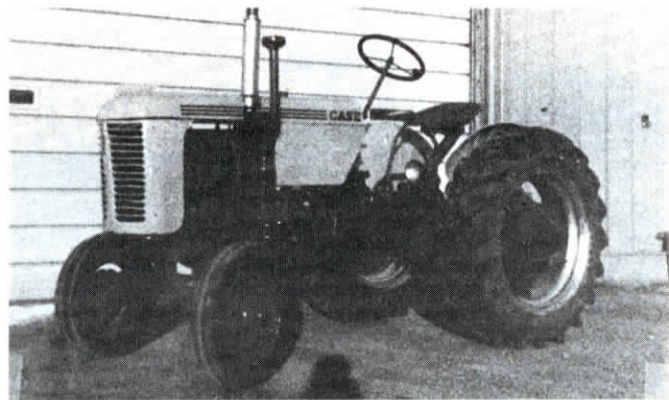
Bales get wrapped in a new-style plastic netting that overlaps the ends of bales by about 2 in., protecting the edges of the bale. "Twine can't be used on a continuous baler because the tying process takes too long," says Switzer, noting that netting also sheds water better than twine. "Our special-made netting costs more than twine but no more than standard netting."

The new baler has the same rear chamber as Vicon's 1200 series baler models and is



New baler has a drop-down curtain that stops intake of hay while bale is ejected, equipped with the same style of electronics as used on their top-of-the-line electronic-controlled baler. When the bale reaches a preset size and density, net wrap is fed around the bale and a canvas curtain - controlled by a hydraulic cylinder - drops down to block the inlet to the bale chamber. The bale is wrapped 1 3/4 times by netting before the rear doors open hydraulically to eject it. While that's happening, incoming hay is pushed against the retaining canvas by an up-front rotary feeder. Once the rear door is closed, the canvas is automatically released by the retraction of a hydraulic cylinder and the contained hay starts a new bale. The canvas is rewound by a hydraulic motor, ready for the next bale. The entire process of wrapping the bale, ejecting it, and starting a new one takes just 9 sec.

For more information, contact: FARM SHOW Followup, Vicon Mfg. Inc., P.O. Box 1240, 131 Sheldon Drive, Cambridge, Canada N1R 6C9 (ph 519 622-2800).



Jim Long upgraded this old Case VA tractor so it could handle modern implements.

"WORKS LIKE A DEERE 4020"

Old Case Tractor Fitted With 3-Pt., Hydraulics

Thousands of old tractors don't get used much by farmers even if they run great because they're not equipped to handle modern implements. Jim Long, who farms near Delia, Alberta, owned one of those tractors but decided to upgrade it with "made it myself" hydraulics and a 3-pt. hitch.

"It took several weeks of work to figure it out but it turned out right. Now it's a handy chore tractor that gets a lot of use. We run a wheel rake, roto tiller, cultivator, mower sickle and other equipment with it," says Long. Except for the lack of 3-pt. and hydraulics, his Case VA tractor, built in the 1950's, was in excellent condition. Now that it's been updated, Long says the 30-hp tractor's hydraulics do the work of a Deere 4020. "It's got enough hydraulic power to pick up anything the tractor can handle."

In addition to the other modifications, Long also converted the tractor to 12-volt power.

He mounted a double pulley on the engine's crankshaft. One belt drives a truck hoist pump he mounted on the side of the engine and the other belt drives a 12-volt alternator.

Long mounted a reservoir and 3-spool hydraulic controls above the rear axle just behind the seat. A pair of outlets are positioned at the back of the tractor.

He built the 3-pt. arms from scrap flat iron and swivel ends that he bought at a parts store. The two hitch arms are swivel-mounted on a frame beneath the tractor that bolts to either side of the rear axle. A rocker arm shaft runs across the rear of the tractor. A single cylinder, anchored below the seat and connected to a lift arm above the top link, raises and lowers the 3-pt.

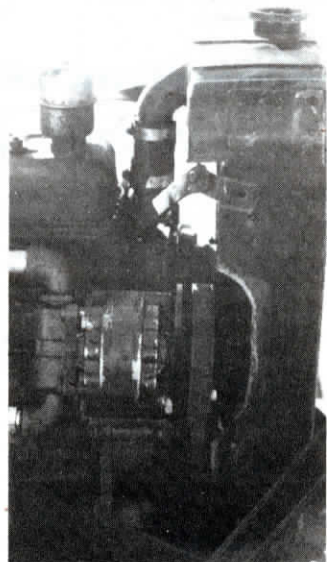
"The trickiest part was getting the right angle on the hitch arms. It took me a couple weeks to figure it out," says Long. One of the new ideas he came up with on his project was using an automotive tie rod to hold the hitch arms in place. "Most tractors have chains flopping around on the hitch. The tie rod runs from the back of the tractor to one of the arms. When nothing is mounted, the other arm swings freely. When both arms are fastened to equipment, the tie rod holds them both solid."

Long would like to find a manufacturer for his 3-pt.

Contact: FARM SHOW Followup, Jim Long, Box 125, Delia, Alberta, Canada T0J 0W0 (ph 403 364-2457).



Long mounted a reservoir, 3-spool hydraulic controls, and pair of outlets above the rear axle just behind the seat.



He mounted a double pulley on the engine's crankshaft to drive a truck hoist pump and 12-volt alternator.



Handi-Fill can be lifted in and out of pickup with a front loader.

**"HANDI-FILL" BULK HANDLER
SLIDES INTO PICKUP BED**

Handy New Way To Fill Planters, Drills, Feeders

New from Aqua-Therm is the Handi-Fill, an auger-equipped "tender" that takes the backwork out of handling bulk materials.

"It's especially suited for handling granular herbicides packaged in lug-type bulk containers, such as Monsanto's Crop Store Granu-Blend system," notes Olav Isane, marketing director.

The self-contained unit (48 in. wide, 60 in. long and 74 in. high) is made of 12 ga. metal and holds 3,000 lbs. of herbicide (or 2,000 lbs. of seed or feed). It fits between the wheel wells of a standard pickup and can be lifted in and out with a forklift or front tractor loader. A 5 hp Honda engine with an integral reduction unit and clutch powers the tender's 4 in. dia heavy duty auger which,

in a standard pickup, reaches to a height of 12 ft. above ground level.

"You can unload lug-type containers directly into the Handi-Fill's hinged 2 ft. by 4 ft. top opening for easy loading into the hoppers of planting or application equipment," says Isane. "During the off-season, the Handi-Fill can be used to fill livestock feeders, or to provide rodent-proof storage for leftover seed, feed or fertilizer. A bottom cleanout simplifies the chore of switching from one product to another."

For more information, contact: FARM SHOW Followup, Aqua-Therm, Rt. 1, Box 1, Brooten, Minn. 56316 (ph 1-800 325-2760, or 612 346-2264).