



Powered by a 20 hp Kohler engine, "Master Wrap" adapts to different size bales by simply adjusting five bolts in squeeze chute.

ADJUSTABLE CHUTE ADAPTS  
TO ROUND OR SQUARE BALES

## Silage Bale Wrapper Handles Any Size Bale

Any high-moisture bale can be tightly wrapped with plastic to make "balage" with this versatile new wrapping machine.

Thanks to its adjustable squeeze chute, it can handle round bales, big square bales and cover small square bales stacked in piles.

The "Master-Wrap" is powered by a 20 hp Kohler engine. It adapts to different size bales by simply readjusting five bolts in the squeeze chute, the company says.

It's equipped with a 14 gpm hydraulic pump to operate a 6-ft. cylinder that operates a bale pusher. Its steering and unloading system, which lowers it to the ground for wrapping and raises it to 20 in. off the

ground for transport, is also hydraulically operated.

Two 30-in. plastic dispensers are chain-driven by a roller chain.

Fold-down loading chutes on both sides allow you to load the machine from either side. Chutes latch in up position for transport.

It rides on 12 or 16-in. rubber wheels. It measures 17 ft. long by 8 ft. wide by 8 ft. high and weighs 4,500 lbs.

Sells for \$13,900. Pto-driven models also available.

Contact: Miller's Welding & Repair, 54 Christiana Pike, Christiana, Pa. 17509 (ph 610 593-6112).

## "Reroute Kit" For Muffler, Air Cleaner On Deere Tractors

Deere 8430 and 8630 as well as 40 series 4-WD tractors have a large oval exhaust muffler and 6-in. dia. air cleaner stack on the hood which causes poor visibility and a real "pain in the neck" when one looks around these obstructions all day.

Ramey Pottinger, New Haven, Ky., "modernized" his two Deere 8430's by discarding the original muffler and replacing it with a standard 54-in. truck muffler, mounting it on the right hand fender along with the original air intake stack. By relocating the stock air cleaner on the fender with the exhaust system, he was able to minimize the visual obstruction much like the newer series Deere and the popular Kinze repower units.

"The muffler and air cleaner stack line up with the right hand cab post so they're hardly visible from inside the cab. I now have a much better and safer view of the work area ahead of me," says Pottinger. "We made the modification on our own two 8430's and also on a neighbor's. We even have an 8430 scheduled to be shipped in from North Carolina after planting season to be retrofitted. We recently decided to offer a kit that will sell for \$950. It includes instructions and all the materials necessary to do the job."

Pottinger bought a new 54 in. diesel truck muffler and off-the-shelf exhaust parts to make up the exhaust plumbing. Heavy-duty elbow materials make up the sharp turns necessary to make the system adapt to the turbo outlet. He routed the exhaust and air intake plumbing to the right-hand fender. This also necessitated moving the fuel filter system to the front of the tractor, where it's easily accessible behind the right front screen, and mounted on the old air cleaner bracket. "The fuel



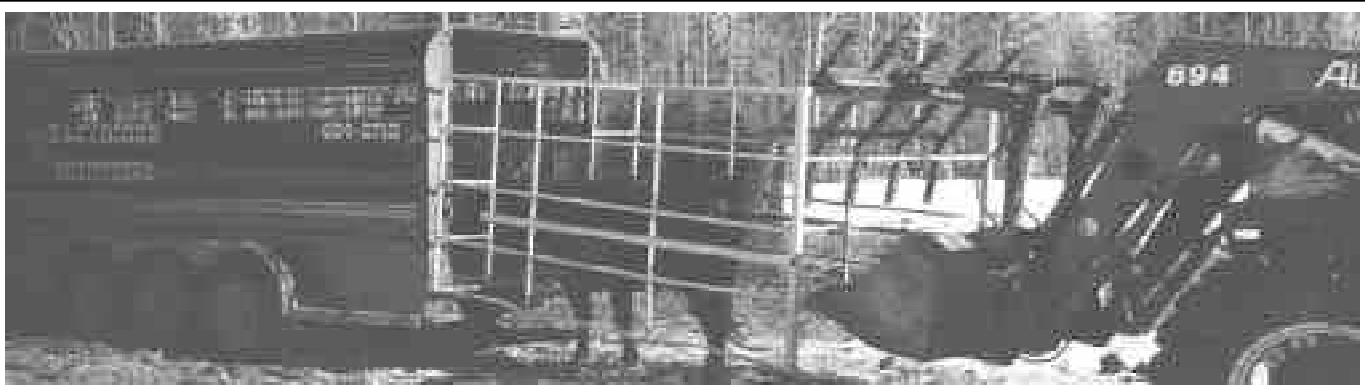
A 4-in. dia., 54-in. high diesel truck muffler on right side replaces original.

filters are now protected inside the screen, which can be quickly dropped down for easy 'walk up and service' access," notes Pottinger.

"Once we figured out how to put everything together, it was a relatively simple job. The first 8430 we did cost us about \$2,700 including labor. We found that by using off-the-shelf parts from local suppliers we could fabricate our own turbo-to-exhaust adapter (Deere's 50 series adapter costs about \$300) and use stock air intake parts, we could put together a fairly economical package that really compliments these Deere work-horses," he says.

To fill in the holes left in the body by the modification, Pottinger welds plates under the holes and fills in with fiberglass, then adds a fresh coat of paint to the hood. He recommends sending the hood to a local body shop where these repairs can usually be done for less than \$100.

Contact: FARM SHOW Followup, Ramey Pottinger, Rio Vista Farms, 135 Howardston Rd., New Haven, Ky. 40051 (ph 502 549-3628).



The entire headgate on Reum's loader-mounted cow catcher opens like a door to allow him to load animals into a trailer or barn.

## Loader-Mounted Cow Catcher

"It really works slick for treating cattle in the field. We've also used it to move everything from calves up to 2,000-lb. bulls," says Duane Reum about his home-built loader mounted cow catcher.

The Wanham, Alberta, farmer's cow catcher consists simply of a 6 by 12-ft. cage with a commercial head gate mounted on front. The catcher's main frame is built of 2-in. sq. tubing, with smaller square tubing used on the side rails.

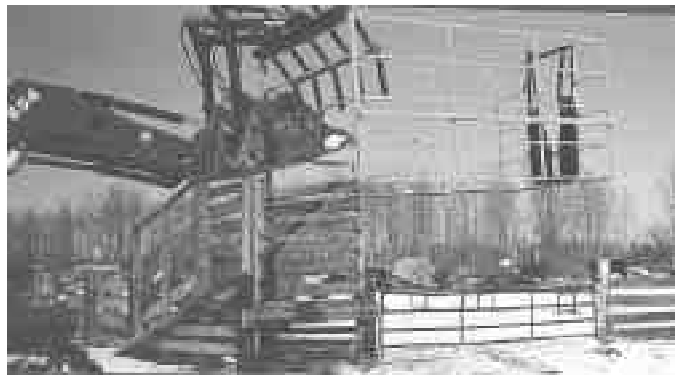
A shop-built heavy-duty grapple fork mounted on the bucket clamps over the top rail of the cow catcher, as two 1-ft.

lengths of tubing slip into the bottom of the bucket.

Reum simply sets the cow catcher down over an animal he wants to catch. He can walk an animal to a cattle trailer by carrying the catcher about 18 in. off the ground as he drives the tractor ahead.

"The cow catcher works well because our cattle are used to having a tractor around for feeding. It doesn't spook them," notes Reum.

Contact: FARM SHOW Followup, Duane Reum, Box 95, Wanham, Alberta, Canada TOH 3PO (ph 403 694-2713).



Catcher raises to position (above) and then lowers over the animal.