

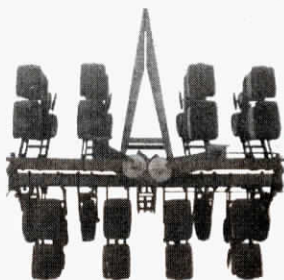
NO HYDRAULICS OR SPECIAL TOOLS NEEDED

Fold-Forward Kit For Deere Planters

Been wishing you could fold your Deere planter to narrow it up for easier transport down the road?

If so, you'll be interested in a new "do-it-yourself" fold-forward kit specially built for Deere 7000 planters. It'll give you a transport width of just 16 ft. on a 12-row model, or 11 ft. 6 in. on an 8-row model. No hydraulics or special tools are required, and, once installed, you can lock the "wings" forward in less than a minute, according to inventor Gary Kelderman, of Kelderman Manufacturing, Inc., Oskaloosa, Iowa.

Kelderman manufactures the fold-up hinge kit for rigid toolbars which was featured in an earlier issue of FARM SHOW (Vol. 3, No. 3). That do-it-yourself kit fits a variety of equipment, including rotary hoes, field cultivators, some makes of planters, and other equipment. It lets you hinge any rigid 5-in. or 7-in. toolbar.



Kelderman's new kit for Deere 7000 planters comes with complete instructions for do-it-yourselfers and only takes several hours to install. Or, you can have Kelderman custom install it for you at his Iowa plant.

To install, you cut out a 5-in. section of the bar on either side, cutting the hex drive and hydraulic hoses as



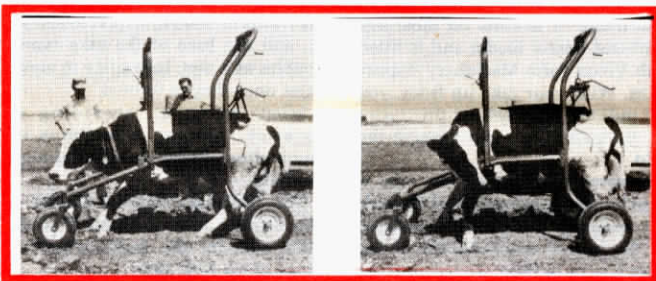
Kelderman "hinged" 12 row Deere planter folds to 16 ft. road width in minutes.

well. Hinges, which are already mounted on tubes slightly smaller than the toolbar, slide into both ends of the newly-cut bar and weld into place. A spring-loaded coupler, attached to the hex drive, engages automatically when the toolbar is swung into field position. Hydraulic hoses are simply reconnected. Locks for both field and over-the-road positions hold the wings in place.

Kelderman says the conversion doesn't affect warranty. "About 80% of the kits we've sold were shipped directly to Deere dealers," he told

FARM SHOW. Cost for the 12-row model that folds to 16 ft. is \$995. The 8-row model that folds to 11½ ft. sells for \$885.

For more information, contact: FARM SHOW Followup, Kelderman Manufacturing Inc., Highway 92 East, P.O. Box 273, Oskaloosa, Iowa 52577 (ph 515 673-4708).



This 1,650 lb. Holstein had been down for a week before being raised with the Cow Buoy. In two hours, the animal responded enough to be towed to the barn behind a pickup.

"COW BUOY" SAFELY RAISES DOWNED ANIMALS

New Wheelchair For Livestock

After five years of field testing, a new wheel chair for hoisting down but live cows and other livestock to their feet and moving them has been developed. Aply named the Cow Buoy, the Nampa, Idaho, device can take on any dairy or beef cow, and can be managed by just one man if necessary.

The \$850 item also can be towed safely at highway speeds, according to the people at Farlow Manufacturing. They say it moves easily over all types of terrain, and is easily positioned for hoisting a downed cow. After raising the cow, she's towed behind a pickup or tractor to the barn or corral area where she can be fed and watered while being sup-

ported in the machine.

The Cow Buoy supports the cow both front and rear in a manner that gives her freedom of movement while being supported.

"With the cost of dairy replacements, just one use of the machine will pay for its cost," the manufacturer points out. "It also is a dandy item for farm cooperatives and veterinarians to have on hand to rent out to farmers and ranchers when needed."

For more information, contact: FARM SHOW Followup, Farlow Mfg. & Dist. Co., 1305 Chicago Ave., Nampa, Idaho 83651 (ph 208 467-2822).

MAGNETIC AND PORTABLE

Floodlight Kit For Nighttime Farming

"They'll pay for themselves the first time they let you extend your working day," says Richard P. Borglum, president of Richway Products, Inc., Janesville, Iowa, marketer of a new portable nite-light kit.

The kit features four portable sealed beam floodlights with magnetic base. They're controlled by a switchbox in the cab of tractor, combine or other machine, and are powered off the machine's 12 or 6 volt battery. Each light has a 20-ft. cord that plugs into the switchbox and is designed to be moved to wherever you need it.

"You can point one ahead of you, one off to either side and another towards the equipment behind you," says Borglum. "Each has a strong magnet that stays put in almost any position without shaking loose. To our knowledge, all other portable light systems are mounted in a fixed bank of lights."

Each light swivels and is adjustable. There's an individual control on the switchbox for each light and a master switch to control all of them. "When combining, you can leave the rear light off. Then, when you stop to empty, you turn it on from the cab," explains Borglum.

You have a choice of floodlights or



Each floodlight has a magnetic base and comes with 20 ft. of cord.

spotlights with the system, although Borglum says most farmers prefer the floodlights. A set of four lights, with the switchbox and a steel storage panel sells for \$240.

For more information, contact: FARM SHOW Followup, Richway Products, Inc., P.O. Box 508, Janesville, Iowa 50647 (ph 319 987-2224).