

## “Grease Gun” Slip Clutch For Drive Shafts

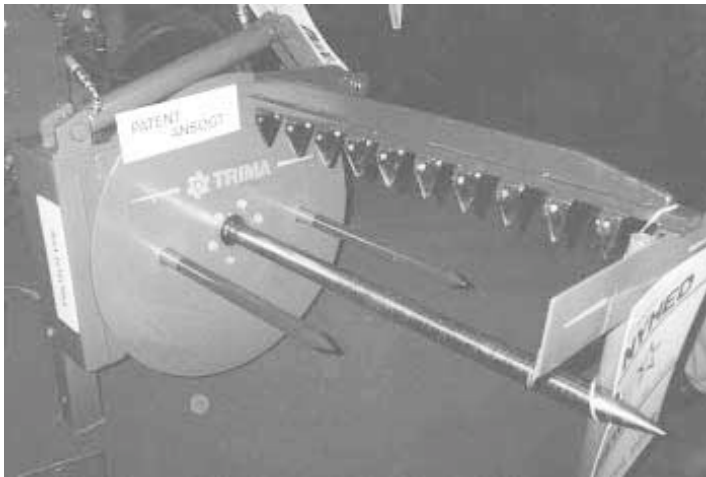
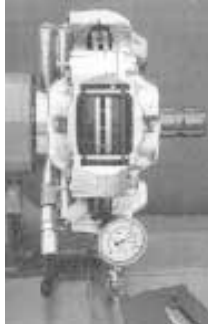
A new safety slip clutch that mounts between a pto shaft and the machine it's powering adjusts quickly and easily with a standard grease gun.

The newly patented clutch from Finland is designed to prevent damage to mowers, brush shredders and other pto-driven equipment. The manufacturer says many pieces of equipment have shear pin protection but if the pin is broken you're out of business until you can replace it. With the new slip clutch, the equipment simply stops when it hits an obstacle with no damage done.

The unit is simply a modified automotive-type clutch. Clutch plates are adjusted by attaching a grease gun to a fitting on the unit. Pressure is set according to the type of machine.

Contact: FARM SHOW Followup, Suokone Oy, Fin-88610 Vuokatti, Finland (ph 011 358 8 666 2011; fax 011 358 8 666 2014).

**Slip clutch mounts between pto shaft and the machine it's powering to prevent damage. A grease gun (at bottom of photo at right) is used to set pressure level of clutch.**



Hydraulic-controlled cutterbar moves into bale as it's unrolled.

## Round Bale Unroller Slices As It Feeds Out

A new round bale unroller takes a simple, low-horsepower route to slicing and unrolling big round bales.

It consists of a spike-type bale unroller that fits tractor loaders or 3-pt. What makes it different from other unrollers is that it has a row of sickle sections mounted on a bar above the bale. It cuts up hay as it peels it off. The cutterbar moves into the bale as it unrolls, controlled by a hydraulic cylinder.

“It cuts up bales like no other round bale feeder we've ever seen. It does the job of big unrollers that cost much more,” say company reps of Trima, the manufacturer.

Contact: FARM SHOW Followup, Trima A/S, Bjernevej 30B, 7800 Skive, Denmark



Spike-type bale unroller has a row of sickle sections mounted on a bar above the bale.

(ph 011 45 975 12144; fax 011 45 975 12604; E-mail: trima.as@post.tele.dk; Web Site: www.trima.se).

## New Articulated Tractor Introduced At Danish Show

A Danish-built utility tractor made its debut at the Agromek show in Herning, Denmark.

The 123 hp articulated tractor with a Perkins turbocharged diesel features front and rear 3-pt. quick hitches and pto's.

The nimble tractor features an electronically controlled hydrostatic transmission with continuously variable speed controls through the entire range. Two big hydraulic motors, one on each axle, are controlled and adjusted 28 • FARM SHOW

by a computer which is programmed with four different speed ranges. The “road mode” tops out at about 25 mph while the “working mode” tops out at about 6 mph. A “constant” mode acts as a cruise control so the operator can set any speed which will be maintained regardless of load.

The tractor also features a stabilizing cylinder at the articulation joint which can be used to keep the joint from “twisting”. When

## First-Of-Its-Kind Mastitis Detector

You can detect mastitis in dairy cows up to four days prior to an outbreak with this new detector invented and manufactured in Denmark.

The new detector can be used with most makes and models of milking systems. It works by detecting increased salt content in milk, which indicates the onset of mastitis.

Portable unit can be used in parlors or stanchion setups. It simply installs in each milking unit and tells you which quarter of the udder is infected. Early detection greatly reduces the amount of antibiotics needed to cure a problem, the company notes.

Contact: FARM SHOW Followup, S.A. Christensen & Co., DK-6000 Kolding, Denmark (ph 011 45 75 52 36 66).



Detector installs in each milking unit and works by detecting increased salt content in milk.



Tire bolts to a steel plate that rotates at the end of a 3-pt. mounted steel arm. Works great for keeping feed within reach of cattle.



## “Feed Pushers” Made Out Of Old Tires

A Dutch manufacturer has found a new way to put worn-out tractor tires to work. The tires are used to make 3-pt. mounted “feed pushers” used to clean up alleyways in barns and keep feed in reach of cattle.

The tires simply bolt to a steel plate that rotates on the end of an arm that mounts on the 3-pt. hitch. The arm moves hydraulically

from one side of the tractor to the other. It angles against the ground so contact with the ground causes it to rotate.

Contact: FARM SHOW Followup, Vliebo BV, Munnikenweg 36, 3905 MJ Veenendaal, Netherlands (ph 011 31 328 519999; fax 011 31 318 553448).

## Shaker Sieve For Front End Loaders

Sifting through gravel, sand, top soil or any other flowable material is easy and economical with this new add-on “shaker sieve” for loader buckets.

The mesh screen simply fastens across the front of any loader bucket. It's fitted with a hydraulic motor at center that runs off tractor hydraulics. The screen simply flips up for loading and then drops down for sifting. When the shaker motor is activated, the screen vibrates, causing material to drop through as the bucket is tipped. Any large objects stay inside the bucket and can be dumped elsewhere.

Contact: FARM SHOW Followup, Trima A/S, Bjernevej 30B, 7800 Skive, Denmark (ph 011 45 975 12144; fax 011 45 975 12604;



Hydraulic motor causes screen to vibrate, which causes material to drop through as bucket is tipped.

E-mail: trima.as@post.tele.dk; Web Site: www.trima.se).



Stabilizing cylinder keeps tractor's articulation joint from “twisting”.