

"NO HANDS COUPLER"

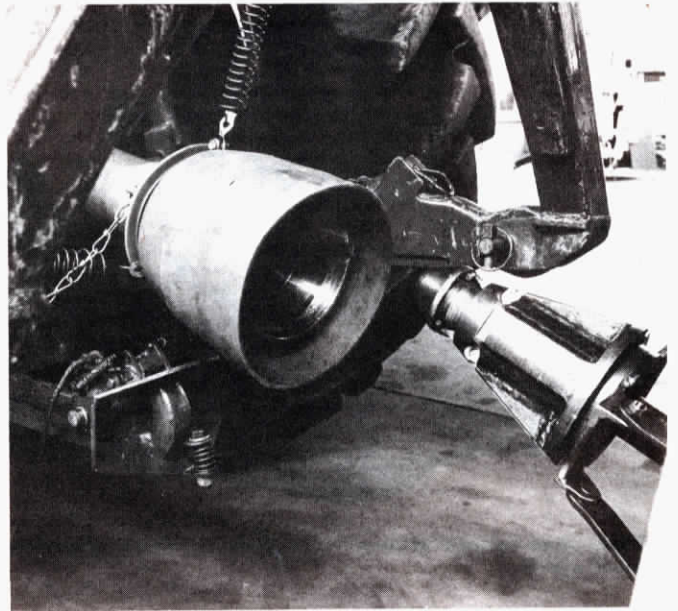
Automatic Coupler For Tractor Pto's

Without leaving the tractor seat and without activating levers of any kind, the driver can engage and disengage the new automatic pto coupler developed at the Institute of Agricultural Engineering in Tastrup, Denmark.

The new coupler is unique in that it automatically locks together as soon as the male shaft is inside the conical half of the coupler mounted on the tractor. When the shaft is inserted and it begins to rotate, it causes latches on the conical guide to trip, locking the cone and guide together. To disengage, the implement is first drawn back so that the shaft retainers ride up in the groove, retracting the latches and releasing the cone from the guide.

"This is a really unlike previous attempts to build an automatic pto, which involved a switch you had to trip, or a latch to hook up," explains S. Sonne Kofoed, of the agricultural institute. He notes that the new quick coupler has only been used on quick-attach 3-pt. mounted equipment but that there's no reason it won't work with trailing implements. The institute has been in touch with U.S. manufacturers and welcomes all inquiries.

For more information, contact: FARM SHOW Followup, S. Sonne Kofoed, Institute of Agricultural Engineering, 2630 Tastrup, Denmark (ph 02 992613).



Conical guide on female shaft allows easy engagement or disengagement without manual assistance.

LIFTS UP TO 8,000 AWKWARD POUNDS

Tractor Loader Handles Big, Clumsy Equipment

You'll actually like moving big equipment with this loader that reaches out nearly 12 ft. in front of the tractor to pick up as much as 8,000 lbs. It has a 21 ft. lifting height and can also be used to haul big bales, barrels and, with a forklift attachment, just about anything else on the farm.

The loader will pick up anything that can be attached to a chain and that will clear the 11½ ft. gap between the end of the lift boom and the front of the tractor.

"That means you can easily move 22 to 23-ft. disc gangs or headers. You can load even longer equipment if you guide it so it doesn't spin around," explains Scott Swartz, of Max Swartz & Sons, manufacturer.

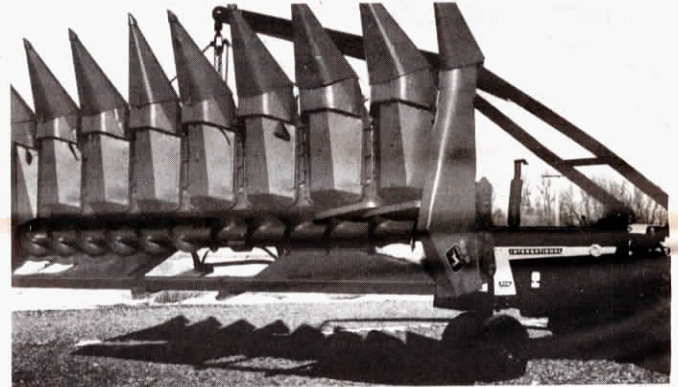
The loader is designed to mount on tractors from 70 to 110 hp. The

amount of lift depends on the amount of weight on the back of the tractor. It takes about an hour to put on or take off. The single lift cylinder is a 3-stage truck cylinder.

"Our greatest number of sales have been to implement dealer but we've also had a lot of farmer interest. Farmers are using the loader with a fork lift attachment, or with a scissor-like grappler, to haul big bales. The loader will carry much more weight than conventional front end loaders. We also have a barrel attachment for carrying 55 gal. drums," says Swartz.

The loader sells for \$2,650.

For more information, contact: FARM SHOW Followup, Max Swartz and Sons, Sacred Heart, Minn. 56285 (612 765-8892 or 765-2243).



Swartz loader handles awkward loads up to 8,000 lbs.

FITS 7000 SERIES PLANTERS

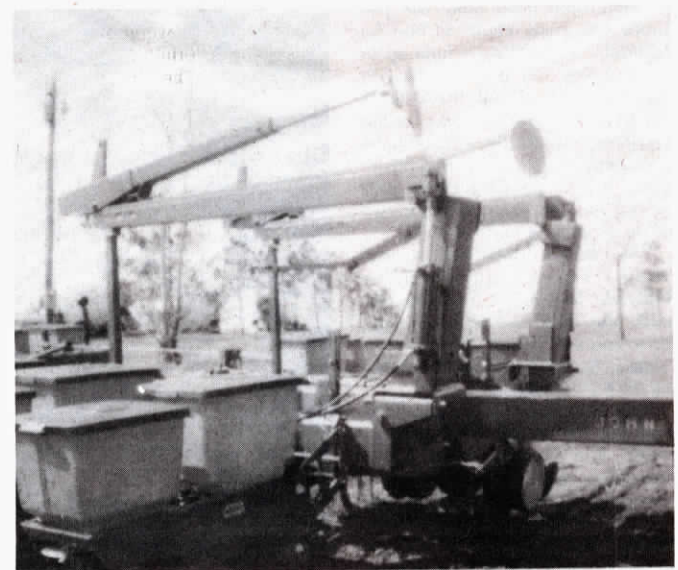
Folding Hinge Kit For Deere Planter Markers

New from Kelderman Mfg., Oskaloosa, Iowa, is a hinge for hydraulically folding the markers on Deere's 7000 series planters for transport.

On Deere's 7000 front-folding 12 row planter, you cut the existing markers with a band saw and weld in the Kelderman hinge. Use of the hinge brings overall height of the markers down to less than 11 ft. in the

folded-over position for transport, and for turning at the ends. The kit, including a pair of hinges, two cylinders and hoses, sells for \$600.

On Deere's 7000 rigid bar mounted or pull type planters (8 row wide, 8 row narrow or 12 row narrow), the original factory-installed markers are replaced with a bolt-on Kelderman marker which has the center folding



Hinge kit for planter markers lowers the transport height.

hinge built in. A set of center-folding markers, complete with hinges, cylinders, hoses, and electric control valves, sells for \$895.

For more information, contact:

FARM SHOW Followup, Kelderman Mfg., Oskaloosa, Iowa 52577 (ph toll free 800 247-8110; Iowa residents dial 800 622-8236).