

## HANDLES 4 FT. LOGS

# Danish Furnace Burns Wood, Hay or Straw

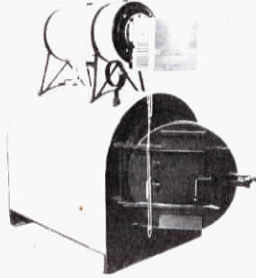
Out of Denmark, where it has thousands of successful customers, comes the Passat central heating system for burning wood or other solid fuels.

The Passat heater can be installed as an independent heating system — or in combination with oil or gas — for distributing heat like a warm air furnace, or through a hot water boiler.

The Passat burns solid wood logs up to four feet long, as well as coal. In Denmark, the furnaces are often fueled with tightly packed bales of hay or straw.

The heating plant is equally adapted for home or commercial heating. It could be used to heat a hog house, calf barn, or greenhouse. It usually fits into the system of an existing house or building without any major modifications.

For residential use, Passat recommends a 150,000 BTU unit and, for BTU size which sells for \$1,200. For farm use, the manufacturer recom-



mend a 150,000 BTU unit and, for commercial use, a 500,000 BTU unit that costs \$4,500.

Passat USA, the American distributor, has sold more than 2,000 units in the United States. Demand is heavy, and they are taking orders now for next fall delivery.

For information contact: FARM SHOW Followup, Passat USA, Inc., One North Road, East Kingston, NH 03827 (ph 603 642-8553).



The Passat furnace will burn most any combustible material, handling objects up to 4 ft. long.

## STEEL COVER EQUIPS COAL CARS TO CARRY GRAIN

# Nebraska Inventor "Tops" Grain Transport Problems

The shortage of available grain cars regularly frustrates farmers and elevator operators alike. Now, a Nebraska elevator operator, who is also a small manufacturer, has developed a partial answer to the problem ... steel tops for hopper-bottom coal cars.

George Piester, of Minden, reports that the 12-ga. steel covers he's designed can be mounted on a coal car in about 90 min., and can be easily removed if necessary. The tops are securely bolted down and are expected to be far more durable than nylon and fiberglass covers previously tried by the industry.

Piester's two-ton covers each have four 2 x 8 ft. doors for rapid filling of the four compartments in each car. An average 50 ft. coal car, says Piester, can hold about 3,300 bu. of grain — only 200 bu. short of the capacity of present jumbo grain hopper cars.

If someone plans to use Piester's tops on leased or purchased coal cars, he suggests they carefully check the cars for leaks, and to be sure bottom hatches are in good condition to

avoid grain loss in transit. Piester says orders for covers can be filled within two to four months, depending on the number ordered and the time required to obtain steel. Covers can be mounted on cars routed to Minden, or they can be assembled in Piester's plant and shipped by rail for buyer installation.

Piester's idea was initially well-received by railroad officials who viewed it as a way to use surplus coal cars, and as an excellent means of easing the annual grain car shortage. Now, however, after several covers have been built and placed in operation, Piester has been informed that, due to changing energy demands, there really isn't a surplus of coal cars. Nonetheless, he's ready to build and sell covers on order for anyone interested in converting coal cars for grain transport. Cost is about \$5,300, FOB Minden.

For more information, contact: FARM SHOW Followup, Piester Mfg., Minden, Neb. 68959 (ph 308 832-2860).



Each coal car top has four 2 by 8 ft. doors for filling the four compartments with grain.