

Drawing shows new trash-clearing wheels, left, and tined closing wheels, right.

“SETTING NEW PERFORMANCE STANDARDS”

“New & Improved” Trash Clearing, Closing Wheels

Walt Carroll tried two different brands of trash-clearing wheels on front of his Deere Max-Emerge planter before he finally decided to build his own. He came up with an innovative new 3-wheel design plus coulters that mounts on a spring-loaded “walking beam” that he says is “setting new standards for the industry”.

The Texas farmer says he also wasn't satisfied with the performance of closing wheels on his Deere planter. He decided to experiment with using the same type of tined wheels to close up seed furrows and ended up with a new design that he says “will take the industry by storm”. Already, he says, Deere, Kinze, White and other planter manufacturers are considering offering his tined closing wheels on their planters.

Following are details on each of the new planter attachments:

Trash-Clearing Wheels - Carroll's trash-clearing unit consists of an up-front coulters that slices through trash and forms a trench for dry or liquid fertilizer 2 1/2 in. to the side of the seed furrow. A tined wheel mounts to the side of the coulters, centered over the seed furrow. It mulches soil in and around the seed zone. A pair of tined wheels follows behind on the back end of a “walking beam”, moving trash to the side without throwing it up in the air, which Carroll says has been a problem with other trash-clearing wheels.

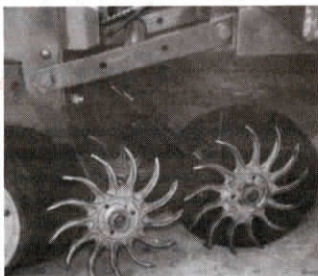
The entire assembly is spring-loaded so it flexes up over obstacles, eliminating damage to the wheels or to the planter frame. The walking beam also keeps the trash-clearing wheels from digging deep furrows ahead of row units, causing uneven seed placement.

“It's also the only trash-clearing unit on the market that can be used for narrow row planting because trash is not fluffed up but remains low to the ground and passes between row units,” says Carroll, noting that he's manufacturing right and left hand units to eliminate side draft.

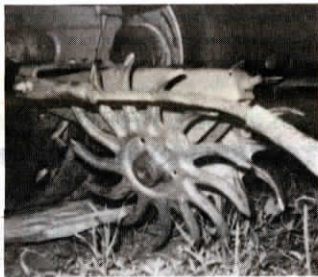
No price has yet been set on the trash-clearing wheels.

Furrow-Closing Wheels - “These closing wheels are so much better than anything else on the market it's unbelievable,” says Carroll. “The tougher the conditions, the better they work. Under certain conditions, conventional closing wheels leave 30 to 40 percent of seed uncovered. These wheels are much more aggressive and cover virtually 100 percent under most conditions.”

The wheels fit the same hardware as the original press wheels on Deere, Kinze, White, and KMC and can be adapted to other models as well. Carroll says the



Spring-loaded trash wheel assembly (above) consists of 3 spoked wheels and an up-front coulters. Tined closing wheels (below) fit existing mounting brackets.



wheels pinch the soil from the sides of the seed rather than shoving surface soil back over the seed. “In wet, sandy, clay or gumbo soils the spokes never pack soil or cause it to crust over. The tilling action of the spoked wheels leaves the soil in a mulched condition above and to the sides of the seed,” he notes.

“These closing wheels will revolutionize planting under no-till or trashy conditions since the angle of the spokes allows them to penetrate through trash to close the slot instead of riding on top of residue. The angle of the tines kicks trash out to the back so they self-clean under all conditions. In addition, less than half the normal down pressure is needed so there's virtually no side load on bearings and the swinging arm mechanism on the planter doesn't wear out. Bearings last 2 to 3 times as long.”

The closing wheels are cast out of tough ductile steel which Carroll says lets them ride over rocks and other field obstacles without breaking.

Last spring Carroll took the closing wheels all over the country to test them under varying field conditions. “Performance was outstanding. Nearly every farmer who got a look at them in action wanted to buy them on the spot,” he says.

The closing wheels sell for \$98 per row. For more information, contact: FARM SHOW Followup, Walter Carroll, HCR Box 84A, Lytle, Texas 78052 (ph 210 772-4141).



Scott Miller chews up donated newspaper with a Wic square bale chopper and blows it into his dairy barn for bedding.

SIMPLE WAY TO OBTAIN “FREE” BEDDING Roadside Bin Provides “No Cost” Dairy Bedding

If you've ever considered switching to chopped newspaper for livestock bedding, you've probably asked one crucial question: How can you get enough newspaper to make it work?

Some farmers pick up newspapers at local recycling centers. Others place ads in local papers and stage their own “recycling day” by parking a trailer in a downtown parking lot. The problem is that even if you don't have to pay for the paper, it's really not “free” since it takes a lot of time and labor to get enough paper to provide daily bedding.

Wisconsin farmer Scott Miller, Beaver Dam, Wis., found a solution to the problem with a simple idea that provides him with a nearly unlimited supply of old newspaper. Miller simply parks an old combine bin at the end of his driveway and puts a sign on it: “Wanted - Old Newspapers” that can be seen by passersby moving in either direction on the highway that runs by his farm.

People drop off papers day and night. In fact, he gets so much newspaper, Miller often has to empty the bin twice a day. He loads the paper by hand into a front-end loader bucket to haul back to the barn.

He chops the paper with a Wic square



People deposit bundles of newspaper into old combine bin parked alongside road at end of Miller's driveway.

bale chopper and blows it directly into his free-stall barn.

Contact: FARM SHOW Followup, Scott Miller, RR, Beaver Dam, Wis. (ph 414 885-3179).

Low-Cost Portable “Evaporative Cooler”

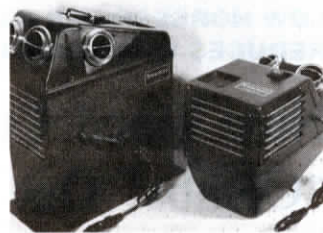
“Our new portable evaporative cooler plugs into any vehicle's 12-volt cigarette lighter. It costs much less than an air conditioner and can be moved from vehicle to vehicle,” says Jack Stich, S & S Mfg., Mesa, Ariz.

The “Swampy” cooler's fan draws air through a “pad” saturated with water. The pad cools as moisture evaporates into the air, resulting in a 20 to 30 degree temperature drop.

The new cooler is available in two different models that each sell for \$299.95. One model straps onto the seat of any car, pickup or truck and has two air outlets - one for the driver and one for the passenger. A larger model bolts onto the floor of the vehicle and is available with either two or four outlets.

“The small model, which holds 1 gal. of water, provides cooling for 2 to 3 hours. The large model is available in two versions. One holds 1 1/2 gal. and provides cooling for 4 to 5 hours, and the other holds 3 gal. and cools for 7 to 9 hours. The 3-gal. model is taller and works great in vehicles like vans that have high seats.

“The amount of cooling depends on the



Portable “air conditioner” can be used in any vehicle or cab with a cigarette lighter.

humidity of air being drawn in. It works best where there's fairly low humidity and won't work in areas with high humidity. It doesn't cool as much as an air conditioner and it won't cool the entire cab - just the person it's directed at. It's not designed to pump hot air out of the cab so you have to leave the windows part way open so that hot air can escape.”

For more information, contact: FARM SHOW Followup, S & S Mfg. Co., 2534 W. Medina, Suite 201, Mesa, Ariz. 85202 (ph 800 444-3827 or 602 897-1233).