

# New From Australia

(Continued from previous page)

## Loader Attachment Stacks Big Round Bales "On End"

You can stack big round bales "on end" with Lyco's new rotating bale stacker attachment that fits most tractor loaders.

It picks the bale off the ground, then rotates it 90° for on-end stacking three to four bales high, depending on bale size and type of tractor loader. The attachment will also handle Hesston rectangular bales. It can be used to retrieve bales from storage.

Sells for about \$1,500 (U.S.).

Contact: FARM SHOW Followup, Lyco Industries, Skipton Road, Beaufort, Vict. 3373, Australia (ph 053 49-2505).



## Handy Depth Adjust For 3-Pt. Tillage Tools

It only takes about 15 seconds to adjust the depth of 3 pt. mounted chisel plows, field cultivators or other tillage tools with Yeoman's "ripple system."

The rippled "male" bar has 20 ripples, one inch apart, on each side. It attaches to the wheel and slides up or down inside the heavy-duty serrated "female" casting which has 10 ripples, 1 in. apart, along each side. A simple steel "key" locks the meshed male and female serrations together at the desired height. To raise wheel height just pull the key, lift the wheel, then insert the key to lock the wheel at the new depth setting.

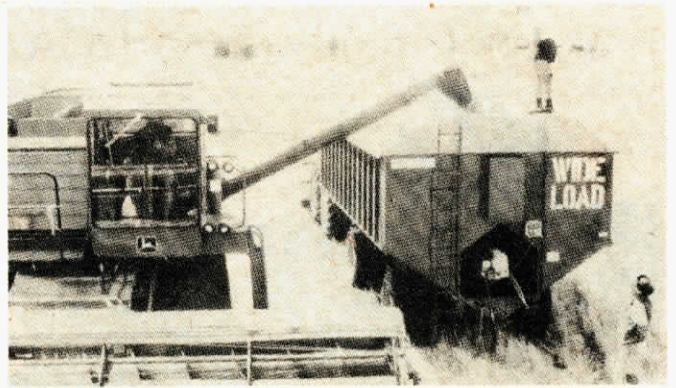
"Weight of the implement is carried by all 10 serrations, making it 10 times stronger than the usual depth control which locks at only one point," explains Alan Yeoman, inventor-manufacturer. "It provides vertical adjustment from 1.5 to 30 in. above ground."

The bolt-on casting fits 4 in. frames and is both left and right hand in one. It can be turned upside down to expand depth control range. "We could ship units, minus axle, hub and



wheels, to interested FARM SHOW readers to save on freight cost. You could then attach the male unit to your own axle-hub assemblies," says Alan.

Contact: FARM SHOW Followup, Yeomans Plow Co., Parkes Industries, 80 Close St., Parkes, NSW 2870, Australia (ph 068 62-1511).



## In-The-Field Grain Dryer

You can dry grain in the field as you harvest with Agridry's new dual purpose grain wagon-dryer.

The 20 ton capacity dryer is divided into two 10 ton bins for separate or simultaneous drying. Grain from one or both bins can be blended back into the bins, or into a truck or grain bin. It'll dry 25% moisture corn at the rate of 2 to 3 percentage points per hour, the manufacturer points out. There is no continuous augering

to split or crack grain or beans.

The portable unit has its own fuel tank (gas or diesel), pto-driven alternator, and centrifugal fan. The 360° swing auger unloads at the rate of 120 tons per hour. Sells for about \$22,500 (U.S.).

Contact: FARM SHOW Followup, Agridry Party Ltd., Highfields Rd., Highfields M.S.F. 103, Toowoomba, Qld. 4352, Australia (ph 076 30 8253).



## "Best Post Driver Money Can Buy"

"We think it's the best fence post driver money can buy," says Munro Engineers of its Multi-Sett MK.

To drive wood posts, the company recommends drilling a pilot hole about 2 to 3 in. smaller in dia. than the post to be set. This ensures a firm, solid set in all types of soil without tamping. An optional post lifting winch allows one man, working alone, to handle and vertically position large wooden fence posts up to 10½ ft. tall.

Another popular option is the Side-Shift which allows the post driver to be positioned without time-consuming maneuvering of the tractor. Side tilt in either direction, plus fore and aft tilt, provides accurate placement of posts on slopes.

Contact: FARM SHOW Followup, Munro Engineers, P.O. Box 80, Ballarat 3350, Vict., Australia (ph 053 393-596).

## Automatic Livestock Feeder

"It can reduce the labor cost of feeding up to 80%," says Graham Kendall, inventor of a self-tending automatic feeder for cattle, hogs, horses or sheep.

Called the Feed Machine, it will automatically feed any predetermined amount of grain or pellets once or twice a day. Feed is released automatically by four computer controlled motors which are driven by batteries. They're kept charged by a 12-V solar panel.

The feeder is available in approximately 100 and 200 bu. sizes, and

with optional racks for free-choice feeding of hay.

Kendall notes that, within 2 days, livestock know exactly when the grain or pellet feed is released, giving the owner the added advantage of an ideal time to check on their condition.

"Key to the success of the feeder is whether or not the animals to be fed have a strong 'pecking order' established," Kendall points out. "Brood mares, for example, normally have such a strong order that individual feeders are necessary. However,

young animals—especially if they're used to being fed together out of troughs, would all tend to get an equal share."

Contact: FARM SHOW Followup, Meadow Feeders Co., 533 Gt. Easter Hwy., Redcliffe, Western Australia 6101 (ph 09 277-9299).

