

Standard hoist is anchored by frame that hooks to gooseneck ball hitch.

Fifth Wheel Cherry Picker

Jack Middleton, Gaylord, Mich., sells Hardy outside wood-burning furnaces. He needed a way to lift the stoves onto his pickup bed when delivering them to customers. That prompted him to make a fifth wheel hitch that attaches to the back of a commercial engine hoist, which he then uses to lift the furnaces in and out of the pickup.

He removed the arms at the base of the engine hoist and attached short pieces of square tubing to a 5/16-in. coupler that hooks up to the ball hitch on his pickup. The hitch is held by pins to the bottom of the hoist.

"It doesn't alter the hoist in any way," says Middleton. "I can put the bottom arms back on and use the hoist as it was intended, or I can attach the fifth wheel coupler and slip the hoist into my pickup and use it to lift furnaces. I've used it to lift loads weighing up to 600 lbs., but I think it can handle loads



Middleton regularly lifts 600-lb. furnaces, but he thinks it would lift 1,100 lbs.

weighing up to 1,100 lbs.

"My total cost was about \$250."

Contact: FARM SHOW Followup, Jack Middleton, 5081 East Martin Lake Dr., Gaylord, Mich. 49735 (ph 231 546-3554).

Home-Built ATV Log Skidder

Douglas Rowalt, Langley, Wash., cuts firewood in an area where the woods are so thick he can't get in with a pickup. He wanted something smaller and more maneuverable, so he made a "log lifter-skidder" for his ATV.

"I've seen photos of commercial log skidders for ATV's that sell for \$2,000 or more. I spent only about \$15 to build mine," says Rowalt.

He used 4-in. dia. aluminum tubing to fashion the arch. A 12-volt winch mounts on the frame to lift the logs. Cable from the winch goes up through a pulley on top of the arch and down to a choker that wraps around the log. The winch is powered by a battery that mounts on back of the ATV.

The log lifter-skidder rides on a set of 13-in. tires off a Volkswagen Rabbit. He reversed the centers of the rims, then welded them back on so the tires clear the frame. The wheels are 4 ft. apart.

Rowalt says he can drag logs up to 10 ft. long.

"It works slick. I can use it to haul pairs of 2-ft. dia., 3-ft. long logs at a time," says Rowalt. "The winch is rated at 4,000 lbs. so lifting power isn't a problem. The only limitation is when hauling big logs up a steep slope, the front end of the ATV will raise off



Commercial ATV log skidders cost up to \$2,000. Rowalt spent \$15 on his.

the ground. If I want, I can mount 300 or 400 lbs. of weights on front of the ATV to solve the problem.

"Since the photo was taken I've remounted the battery on the arch. That way I can unhitch the log skidder without having to take the battery off the ATV."

Rowalt paid \$10 to have the aluminum conduit bent into a half circle. "The rest of the material I was able to scrounge up for free," he notes.

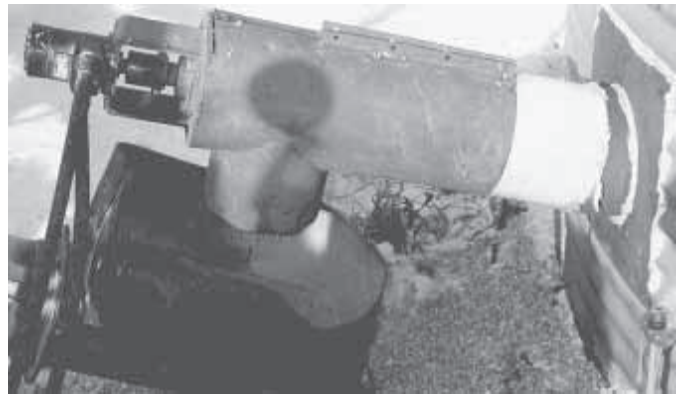
Contact: FARM SHOW Followup, Douglas Rowalt, 5995 Pioneer Park Place, Langley, Wash. 98260 (ph 360 321-8710).

How To Reach Us

To submit a "Made It Myself" Story Idea, New Product, Shop Tip, "Best or Worst Buy", or other information, send a note along with photos, drawings and literature, if available. We'll get back to you later if we need more details. Send to: Editor, FARM SHOW, P.O. Box 1029, Lakeville, Minn. 55044 (ph 1-800-834-9665; fax 952 469-5575). E-Mail: Editor@farmshow.com. You can also submit information at our

Website: [Http://www.farmshow.com](http://www.farmshow.com).

To change your address, renew your subscription, take out a new subscription, order videos or books, or for other information regarding your subscription, contact: Circulation Department, FARM SHOW, P.O. Box 1029, Lakeville, Minn. 55044 (ph 1-800-834-9665; fax 952 469-5575) E-Mail: Circulation@farmshow.com.



Richard uses the auger to move certified seed, several times throughout the year.

Lightweight Take-Out Auger

"I have made a take-out auger that can be moved bin-to-bin by just one person," says Larry Richard of Horace, N. Dak. "I have 8 bins from 18 to 27-ft. dia. and I use the same power head for all of them.

"I bolt on an extension using a square 1-in. shaft. The power head has a clamp on it so it just slips over the end of a piece of PVC schedule 80 sewer pipe," Richard says.

"I use some of the bins for certified seed and must unload them several times a year. I made a pit using the bottom of a 30-gal. drum and concreted the pipe in the pit to prevent it from turning.

"I purchased a cover from a supplier to close the pipe when the auger is out and I use

a hydraulic motor to power the auger, making it light enough to carry.

"The hopper for the auger is also home-made. I welded a collar on the main tube so I can take off the hopper and use the standard open flighting. This is especially useful if I need to go through a door opening," says Richard. "With the hopper attached to the auger I don't have to use a shovel to clean it out," he notes. "If I had to start over the only modification I would make is a larger 10-in. pipe to handle a larger auger."

Contact: FARM SHOW Followup, Larry Richard, 17177 50th St. SE, Horace, N. Dak. 58047 (ph 701 588-4387).

Log Cart Doubles As Cargo Hauler

The NovaJack trailer is truly multi-use. Equipped with a 51 1/2-in. by 88-in. 14 gauge steel box, it will haul your ATV down the road. Once you get to your destination, you can pull it behind your ATV to haul rocks, dirt or other materials. A hand-worked winch turns it into a dump box. Remove the cargo box, insert the curved log posts, and you have a log trailer. Install a loading mast on the side, and you can winch logs aboard.

"You can even load big round bales with the winch," says Pierre Roy, owner. "You can carry up to 1,500 lbs. of wood in the trailer, but you have to tailor loads to the terrain and your ATV's breaking ability. I suggest starting with half a load to get the feel of it. If the trailer is edgy, take a few logs off."

One of several options is a Protection Grating. Designed to slide on the trailer hitch, the grating serves to protect the driver from the wood load and to aid in stacking the load. It also combines with the modular frame and adjustable tandem wheels to balance a load.

"You want some weight, about 100 lbs., on the ball of the hitch to give the ATV a little extra traction," suggests Roy. "If you have a long log, you can slide the grating all the way forward and slide the tandems back. If you want a tight turning radius, you can push the tandems farther ahead.

"One of the main safety features of the trailer is the hitching pole," says Roy. "It's spring mounted on both ends. It can rotate 180 degrees. If you are rounding a corner and you dump the trailer it won't carry the ATV with it."

The double springs also aid the ATV in breaking out a loaded trailer. As the forward spring compresses, the ATV gains momentum a moment before the trailer begins to move. The springs help if the trailer is stuck and the ATV has to be rocked back and forth. They also reduce jerking when traveling down the trail or over the road.

"The initial purpose was to carry the ATV to the site over highways, so we have high



"You can haul up to 1,500 lbs. of wood," says Roy. "You just have to tailor the load to the terrain."



Use the cart to take an ATV to a work site and then use it with the trailer itself.



Cargo box can be removed and mast added to haul logs.

speed bearings on the wheels," explains Roy. "This is our third version since introducing it in 1991."

Roy sells the basic forestry kit for \$1,995 (U.S.). For \$2,495 you can get the trailer equipped for hauling and dumping. Both forestry and hauling/dumping kits and the basic trailer are priced at \$2,995.

Contact: FARM SHOW Followup, Pierre Roy, Portable Winch, 49 Atto St., Lenoxville, Quebec J1M 2A2 (ph 800 567-7318; email: info@novajack.com; website: www.novajack.com).