

STAYS PARALLEL WITH THE GROUND ON SLOPES, SIDEHILLS

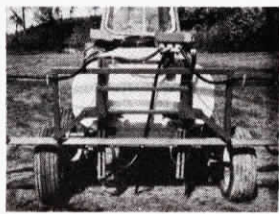
Self-leveling Spray Boom First Of Its Kind

"It's the first and only self-leveling and self-stabilizing sprayer boom on the market," says Frank Machan, sales manager for White-McKee Inc., London, Ont., manufacturer of this "breakthrough" in crop sprayer technology. It's available as standard equipment on the company's complete line of sprayers, or you can buy a self-leveling boom to mount on your existing crop sprayer.

"The self-leveling feature makes it possible to travel at much faster field speeds than with conventional sprayers," explains Machan. "And, because it's self-stabilizing and doesn't bounce, even on the roughest ground, the spray pattern is much more uniform than with conventional sprayers."

The patented self-leveling and stabilizing feature is entirely mechanical and doesn't involve any hydraulic cylinders (see photo).

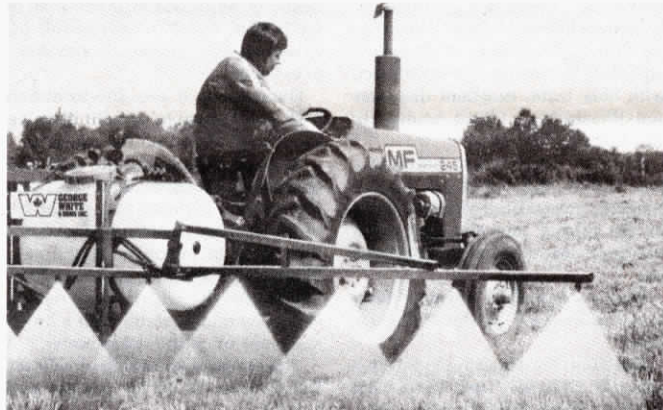
Sprayers equipped with the self-leveling and self-stabilizing boom are available in widths from 20 to 55 ft. Suspended booms are available with



Linkage design of self-leveling boom (see inset photo) keeps boom parallel to ground, even on slopes and sidehills.

3 pt. hitch mounting to operate in conjunction with side or front mounted saddle tanks.

For more details, contact: FARM SHOW Followup, White-McKee Inc., Box 5129, London, Ont., Canada N6A 4L6 (ph 519 681-3131).



"We're encouraging farmers to try ceramic nozzles alongside conventional nozzles to compare performance," says Dick Rayl, distributor.

TEN TIMES MORE WEAR

Ceramic Spray Nozzles

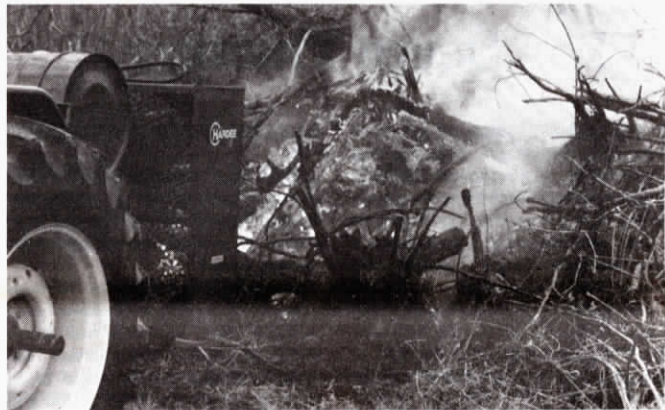
New "improved" ceramic spray nozzles that last "ten times longer than hardened stainless steel" have been introduced by Westgo Industries, West Fargo, N. Dak.

"Ceramic spray nozzles were first introduced about 10 years ago but they never really caught on because of breakage problems. They were all-ceramic and would shatter and break if dropped. The new, improved ceramic nozzles we're introducing are encased in plastic, which serves as a protective shield to prevent shattering and breakage," explains Dick Rayl, president of Westgo Industries.

Cost of the new ceramic nozzles is \$3.50 each. They're color coded for fast, positive identification when

selecting a particular size from an assortment. Ceramic tips are available in all standard sizes in either the "flood-jet" or "flat-spray" pattern. "They're particularly effective when using wettable powder or other abrasive-type spray solutions. We're encouraging farmers to try several alongside conventional nozzles to compare performance," explains Rayl.

For more details, contact: FARM SHOW Followup, Westgo Industries, Box 547, West Fargo, N. Dak. 58078 (ph 701 282-3277). In Canada, contact: FARM SHOW Followup, George White and Sons, 1275 Hubrey RD., P.O. Box 5129, London, Ont., Canada N6A 4L6 (ph 519 681-3131).



Pto-driven fan force feeds air and diesel fuel into trash.

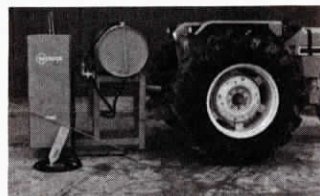
GETS RID OF BULLDOZED PILES OF GREEN OR WET TREES, STUMPS

Diesel "Stump Burner" Blows Fire Into Trash

Nearly every farm has a pile of stumps, trash or some other kind of "mess" that's difficult to burn and too big to haul away. For those farmers, and others who regularly clear land, Hardee Manufacturing in Loris, S.C., has come up with a new stump burner that force feeds fires with diesel fuel.

The new stump burner consists of a 55-gal. fuel tank, hand-held sprayers, and a 6-blade fan (48 in. dia.) that forces fire into hard-to-burn piles of even green and wet wood, and other trash.

"Fifty-five gallons of No. 2 diesel fuel will last 12 to 15 hours," explains Ricky Hardee, assistant sales manager. "You simply hook the fan up to a 540 rpm pto shaft, mounted on the 3 pt. hitch, and back up to a pile of trash. Using the handgun, you completely wet the material to be burned and start the fire. Then start the fan to produce the wind force and, when



The 'stump burner' consists of fan, fuel, fuel tank and fuel spray guns.

needed, apply additional fuel with the handgun outfitted with the high-speed tip. When the fire is completely started, move to a new area and repeat the process."

The entire unit weighs about 595 lbs. Retail for \$1,375 F.O.B. Loris, S.C.

For more information, contact: FARM SHOW Followup, Hardee Manufacturing, Inc., Co., Rt. 4, Box 232, (Mt. Vernon), Loris, S.C. 29569 (ph 803 756-4051).