

## Portable Deer Stand

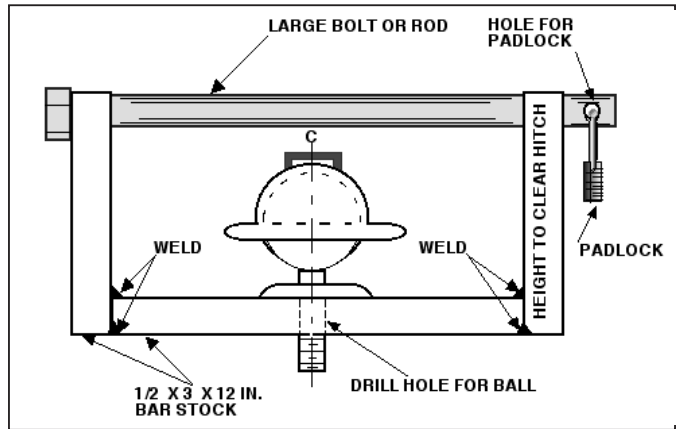
"I needed an elevated tree stand to hunt deer on my farm. I didn't want to make it permanent, and the state frowns on hunting out of a truck, so I aired up the tires on an old running gear and built an elevated platform 6 ft. off the ground," says Doug Kramer, Elroy, Wis.

"I used some old landscape timbers, scrap lumber, and a sheet of tin for the roof. The sides block the wind but still allow unobstructed shooting.

"After the season, I drag it back home and it makes a dandy tree house for the younger boys around here."

Contact: FARM SHOW Followup, Doug Kramer, S-131 Overbrook Ave., Elroy, Wis. 53929 (ph 608 462-8614; doug.kramere@siemens.com).

**Doug Kramer built an elevated platform 6 ft. off the ground on an old running gear.**



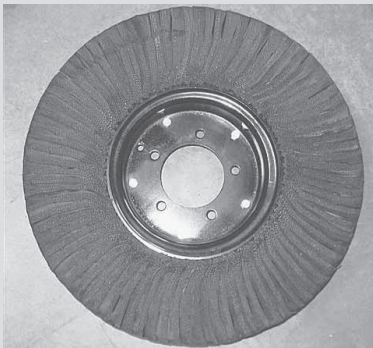
## "Made-It-Myself" Hitch Ball Lock

You can make your own trailer hitch lock that'll secure a ball hitch and eliminate any worries that a hitch will pop off the ball.

Bill Reeks, Cromwell, Ky., simply makes a small frame out of 1/2 by 3-in. bar stock. He drills a hole through it for the ball hitch and sells two sidebars to the ends of the main

bar. Then he runs a large bolt through holes in the side bars, over the top of the hitch. He drills a hole for a padlock at the end of the bolt to lock it in place.

Contact: FARM SHOW Followup, Bill Reeks, U.S. Hwy 231, Box 7104B, Cromwell, Ky. 42333.



Solid rubber tires consist of segments joined together side by side around rim.

## Puncture-Proof "Segmented" Tires

"Our segmented tires are available to fit most industrial and commercial rotary cutters including Deere, Bush Hog, Woods, and other brands," says Deborah Logan, High Grade Mfg., Murrieta, Calif.

The company has been manufacturing laminated segmented tires for the past 10 years. Recently, they made the decision to open their inventory to farmers. Basically the solid rubber tires consist of sections of rubber lying flat against each other.

"These nylon bias tires are made using a unique manufacturing process, so if you've

experienced problems with broken bands in other segmented tires, it won't happen with our tires," says Logan. "We offer piece, pallet, and container load pricing so whether you need two tires or 2,000, we can help you."

A 6 by 9-in. tire sells for \$49.99 plus S&H; a 4 by 8-in. tire sells for \$24.99 plus S&H.

Contact: FARM SHOW Followup, Deborah Logan, High Grade Mfg., Inc., 41606 Date St. no. 201, Murrieta, Calif. 92562 (ph 877 304-7016 or 951 304-7016; fax 951 304-7950; info@highgrademfg.com; highgrademfg.com).

## New Hoppercover Makes Hopper More Accessible

A brand new type of hoppercover system from Signature Cover at Elm Creek, Manitoba, allows the hopper to be either opened, or just partially opened.

"This hoppercover design simplifies the take-down and fold-away process," says inventor Darryl Enns. "It's made from painted steel and consists of an arm that extends over the hopper. The covering is industry-standard 18-oz. pvc tarpaulin. It's opened by manually flipping itself onto itself, and then you re-bungee it down."

Compared to other hoppercover systems, this one is easier to fold away and open. Also, it has fewer parts and steel is stronger than the aluminum used on most hoppercover systems.

The Brilliant Bow System is only for combines with dish-type extensions (both factory and aftermarket). The factory flip-up or

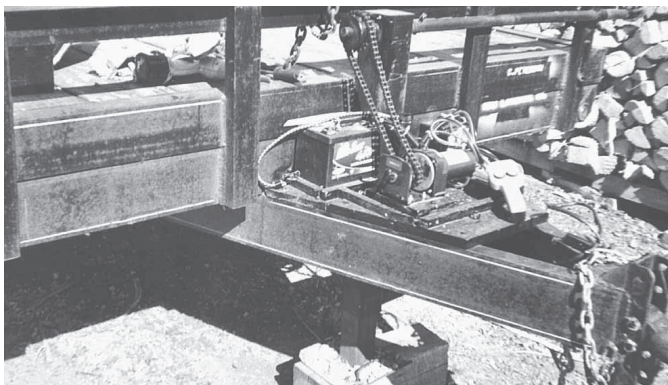


**Hoppercover is easy to fold away and open.**

screen extensions still use the aluminum bow system.

The new hoppercover sells for \$530 to \$775, depending on the combine model.

Contact: FARM SHOW Followup, Signature Cover, Darryl Enns, P. O. Box 10, Elm Creek, Manitoba, Canada R0G 0N0 (ph 204 436-2335; fax 204 436-2335; info@hoppercover.com; www.hoppercover.com).



**A 12-volt winch is used to chain-drive trailer's tongue jack. Shaft that runs to side of trailer can be cranked by hand if power fails.**

## Winch-Powered Trailer Tongue

Do you ever get tired of cranking on tongue jacks when hooking and unhooking trailers?

Clarence Peterson has a large flatbed trailer that he often has to take off several times a day. Cranking the tongue up and down numerous times is hard work, Peterson says.

"I mounted a 12-volt winch (bought from Harbor Freight at 800-444-3353) with power up and power down, plus a freewheeling gear. I removed the winch cable and replaced it

with a sprocket and I also put a sprocket on the shaft of the jack. The gear reduction was just right. I installed a battery to operate the winch. It's charged by the truck batteries. In case of some kind of failure, I can pull the release on the winch and crank it by hand. I take off the crank when using the power winch. It works great for me."

Contact: FARM SHOW Followup, Clarence Peterson, 1511 Lake Shore Dr., Menasha, Wis. 54952 (ph 920 733-2741).



**Telescoping add-on step fits into pickup's Reese hitch. It can be extended out as far as 32 in.**

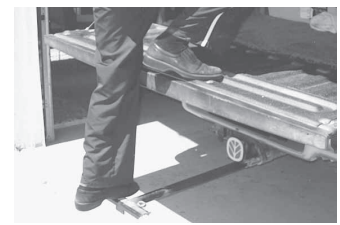
## Telescoping Pickup Step

After buying a new 2004 Ford F-150 4-WD pickup, Rich Driesenga discovered the tailgate was so high he had difficulty reaching inside the bed. And he couldn't find anything on the market to help him get into the bed with the tailgate down.

So he made a telescoping add-on step that fits into the pickup's Reese hitch. The step can be extended to various lengths as needed, as far as 32 in. back. When locked in the closed position, the step is flush with the back of the pickup.

"Because the step telescopes, it can be used with the tailgate in either the up or down position. When the tailgate is up, it provides an additional step that makes it easy to climb up onto the bumper," he says.

The 1-ft. wide step consists of an upside-down channel iron turned up at each end and



with grip-style tread on top of it. The step is welded to the back end of a telescoping pto shaft. The pto shaft consists of a 3-ft. long inner section that slides inside a 6-in. long outer section.

To make a bracket for the pto shaft, Driesenga welded the 6-in. long section to the bottom side of a 4-in. length of angle iron, which in turn is welded to a length of 2-in. sq. tubing that slides into the Reese hitch.

"The step extends 4 in. out on each side of the Reese hitch so even with the shaft pushed all the way in, there's plenty of room for me to put my foot on either side of the hitch. It's easy to take off so I can use the hitch to pull a trailer."

Contact: FARM SHOW Followup, Rich Driesenga, 6591 New Holland St., Zeeland, Mich. 49464 (ph 616 875-8248).