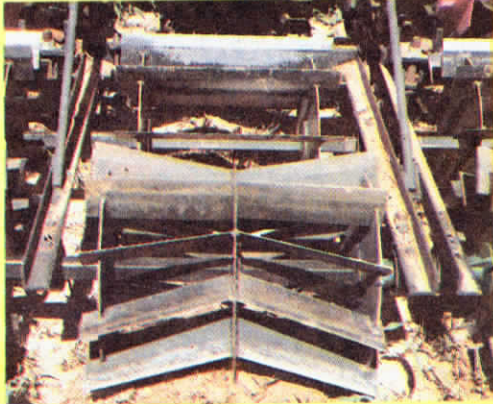


FARM SHOW

For everyone in agriculture interested in latest new products.

Vol. 2, No. 4, 1978

FIVE MACHINES IN ONE



Models of the new Cult-Chopper are available in a variety of configurations for row crops or solid seeded crops. Reels in back row turn twice as fast as front reels.

New "Do Everything" Tillage Tool

You've never seen a tillage tool quite like the "do everything" Cult-Chopper just introduced by Branson's Manufacturing, Guyman, Okl.

The first models were slated to roll off the assembly line as this issue of FARM SHOW went to press. "We think it's one of the biggest-ever breakthroughs in crop cultivation and tillage," Larry Branson, president, told FARM SHOW.

The first-of-its kind tillage tool is made up of two rows of blade-type reels, similar in design to those used on horse-drawn cornstalk choppers. Standard machines are 3 pt. hitch mounted (pull type models available on special order), and are designed to operate at unusually high speeds — 7 to 8 mph. The reels are ground driven with the back row of reels turning twice as fast as the front row. (A roller chain drive off the front reels is geared so as to double rpm of the rear reels.)

"This difference in rotation speed

(Continued on back page)

IN THIS ISSUE:

"Breakthrough" system promises low-cost electricity • Solar electric fence • Best combine book we've seen • "Windrow stretcher" for balers • Instant shade for livestock • Get set to try tramlining • New fun machine for farm families • Raintrap dammer for row crops • New way to raise hogs • Home-built tractor • Cave houses • Cab-under trucks.