



Pressure applied to hand-splitter's handle is multiplied 60 times.

CAM DESIGN MULTIPLIES FORCE OF STROKE

You'll Like This Hand Powered Log Splitter

"My mother is 65 years old and she can split wood with it," says Ed Schroeder, Chapin, Ill., who's designed a unique hand-powered log splitter that uses a ratchet-handled, cam design to multiply the force applied to the handle.

A high-tensile chain bolted to the handle runs over a cam and under the table of the splitter where it attaches to the splitting wedge. Each stroke of the handle pulls the wedge into the wood. A spring pulls the wedge back to starting position when the handle is raised all the way back to the top of the stroke. A ratchet built into the handle lets the operator use short, cam-intensified strokes to split even the toughest wood since if the handle is not brought all the way back up, the wedge doesn't pull back to starting position.

According to Schroeder, the splitter works on a 60 to 1 ratio so 200 lbs.



Photo details ratchet design which lets operator increase down pressure by raising the handle a notch or two.

of pressure applied to the handle results in 12,000 lbs. splitting force. The cam is designed so it exerts the most force in the first few inches so that short strokes have the most power.

The splitter adjusts to cut wood up to 24 in. long. The bottom rail is made from two pieces of 2½-in. wide, ½-in. thick steel.

"Most chunks of wood take 3 to 4

AUTOMATIC BACK DOOR KEEPS OTHERS OUT

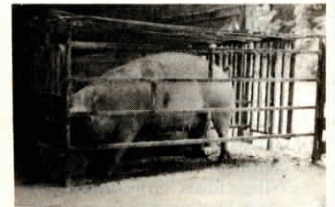
Lock-Out Feed Crate Stops Sow Competition

"Gives you the benefit of total confinement without the expense or other drawbacks," says Nathan Watkins, Watkins Mfg. Co., who's invented a new lock-out feed crate that's designed to eliminate competition at feeding time by automatically locking each animal in its own crate.

A pair of swinging back doors on the crate are trigger-operated when the animal lifts the feeding trough cover with its nose. The doors are spring-loaded so that any animal that tries to force its way in behind the feeding animal is pushed back out. To exit, the animal simply pushes his way out the back, re-cocking the gates.

"I've got 25 sows in an outside pen and I've got 25 feeding crates so each gets his own and eats in peace. Once the animals are in their crates, you can easily give more feed to any that need it. You can even run young gilts together with sows and know that they'll get enough feed," explains Watkins.

Some of his customers set up pens around a feeding area and let each group feed separately. One farmer, for example, has 100 sows but just 25 crates. He feeds them in four separate groups.



When sow lifts cover on feed trough, spring-loaded rear crate gate "slams" shut.

Watkins, who's used the feeder for 2 years in his own operation, says it allows him to keep all animals at the right shape and weight, particularly the slowest, most timid feeders. They catch on quickly to operation of the feeder, he notes.

"Another advantage is that you can lock the crate up with a handle at the rear so they can't get out. Works great for vaccination and other jobs," says Watkins. "This crate lets you treat animals as though they were in confinement but you have the health benefits of letting them move around outside."

Watkins sells the crates for \$110.

For more information, contact: FARM SHOW Followup, Watkins, Mfg., Rt. 3, Box 35, Linden, Tenn. 37096 (ph 615 589-5134).

pumps on the handle. Because of the ratchet, you just work the wedge down through the wood. You don't have to raise the handle all the way up. Once it's split, you raise the handle and the wedge springs back to starting position," explains Schroeder, noting that he can cut as

fast as most hydraulic splitters using his hand model. He's looking for a manufacturer.

For more information, contact: FARM SHOW Followup, Ed Schroeder, Rt. 1, Box 158, Chapin, Ill. 62628 (ph 217 457-2589).

SELLS FOR 15 TO 30% LESS

First Korean Tractor Now On The Market

The first Korean-built tractor to hit the U.S. market made its debut at a recent California farm show, imported by Kioti Tractor, Inc., Portland, Ore.

"Its key feature is price but it's also a practical tractor with many attractive standard features," says Matt Hall, Kioti project engineer. The only Kioti model so far available is a 22-hp, 4-WD 3-cyl. diesel. The tractor has 8 forward and 2 reverse speeds. Front and rear pto shafts and a Cat. 1 3-pt. accommodate a variety of equipment, as do the front and rear hydraulic outlets.

The tractor features easy servicing. Fuel tank, oil dipstick, radiator and air cleaner are all easy to get at under a lift-up hood. Comes with complete service tool kit and sells for \$6,995.



Kioti tractor can be fitted with heavy-duty loader.

The company, which is setting up dealers throughout the country, plans to introduce a 50 hp. model in the near future.

For more information, contact: FARM SHOW Followup, Kioti Tractor, Inc., P.O. Box 11066, 7911 N.E. 33rd Drive, Suite 260, Portland, Ore. 97211 (ph 503 287-5982).

FITS DEERE, IH AND WHITE

Hydraulic Fold Kit

New from Kelderman Manufacturing, Inc., Oskaloosa, Iowa is a hydraulic fold kit for Deere 7000, IH 800 and White 5100 planters.

"It narrows a 12-row planter down to 16 ft., 5 in. and an 8-row down to 14 ft.," says Bill Livezey, Kelderman representative, who says the new hydraulic kit is even easier to install than the company's popular manual fold kit for planters that has been on the market for several years.

The fold kit lets you fold or unfold the planter without getting off the tractor. On a 12-row planter, the three outside rows on either side fold around to the front side, pulled forward by a single cylinder on each side. The company has also just introduced a hydraulic bi-fold marker system that'll automatically fold markers on Deere Max-Emerge planters to a storage height of about 8½ ft.



Kelderman's new planter kit folds outside rows forward.

Kit comes complete with hydraulic cylinders, hoses, and alternating valve.

The planter fold kit sells for \$1,995 for 12-row planters and \$1,795 for 8-row planters. The marker fold kit sells for \$1,095.

For more information, contact: FARM SHOW Followup, Kelderman Manufacturing Inc., P.O. Box 273, Oskaloosa, Iowa 52577 (ph toll free 800-334-6150, in Iowa, call 800 622-8236).