

Weldor's Helper adjusts easily in every direction. Time-saving spring clamp eliminates troublesome C-Clamps.

HOLDS PIECES IN ANY POSITION OR ANGLE

“Weldor’s Helper” Like An Extra Set Of Hands

“My customers wonder how they ever got along without it,” says Orrin Klungvedt, welding instructor and “fixit” shop owner in Lanesboro, Minn., who’s invented a mechanical arm for weldors that holds and positions pieces to be welded so both hands are free to do the work.

“It’s the only holding device I know of with both screw-type vertical and tilt adjustment, both of which are absolutely necessary for accurate welding. Also, most devices use C-clamps to hold the pieces, which can be very awkward and difficult to handle. This unit has a spring-operated clamping jaw that will hold almost anything,” explains Klungvedt.

The new welding arm rides up and down any vertical 2 in. pipe welded to a workbench and it can be moved

easily from one location to another by simply turning a set screw and slipping it off the pipe. It’s totally adjustable in all directions and rotates 360° around the support pipe.

“Small parts can be held in the positioner at a height that’s most comfortable for you and which provides the strongest weld. When hard-surfacing, gravity flow of the metal can be very important and the unit will help with that. Best of all, it eliminates the need for having another person hold the part as you weld,” Klungvedt told FARM SHOW.

The welding arm sells for \$100.

For more information, contact: FARM SHOW Followup, Orrin Klungvedt, OK Manufacturing, 208 N. Parkway, Lanesboro, Minn. 55949 (ph 507 467-3717, or 467-3362).

DOESN'T REQUIRE ANY HEAD ROOM

Bi-Fold Door For Farm Buildings

“The big advantage of our new bi-fold door is the head room you gain,” says Mike Schweiss, designer-manufacturer of the new Schweiss automatic Bi-Fold door. The door mounts on the outside of the building, 30 in. above the ceiling height or present door opening.

The door is made of heavy 2 by 2 in. tubular steel and is designed to withstand high winds. And “up-down-stop” button provides complete and instant control of the door at all times, allowing the operator to stop the door in any position, explains Schweiss. A built-in safety breaker automatically stops the door if it should come in contact with any “forgotten” object.

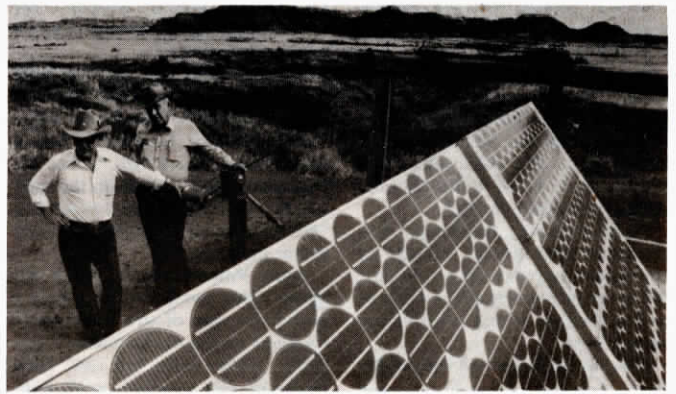
Manual door locks on both sides of the door hold it tight against the building to resist strong winds. Walk-through doors and windows of

any size can be furnished on request.

“We can custom design the door to fit most any size opening in virtually all types of farm buildings, whether quonset, pole, steel, wood or whatever. We have a crew to do the installation, or you can buy a kit and install the door yourself in less than a day,” says Schweiss.

Retail cost ranges from \$1,610 for a 12 by 20 clear-span opening, to \$3,650 for a 16 by 50 opening. Cost includes the electric operator, top header angle, door tracks, trim for the edges, door locks, and all the necessary hardware for installing. The price doesn’t include sheeting for the outside of the door, or installation.

For more details, contact: FARM SHOW Followup, Schweiss Mfg., Mike Schweiss, President, Fairfax, Minn. 55332 (ph 507 426-8273).



Solar panels drive a DC motor which readily adapts to most pump jacks, or to an optional gear-driven pump.

PORTABLE OR STATIONARY UNIT

Solar Powered Water Pump

“This system is competitive with present conventional utility systems and more reliable than windmills,” says Ronald Shaw of his company’s new solar powered water pump.

The new solar system, introduced by Blue Sky Water Supply Co., Billings, Mont., is available as a portable or stationary unit. Either unit can be used to pump water at remote cabin or well sites, or as a booster pump to move water to outlying storage tanks.

The portable unit incorporates all the features of the permanently mounted system, with the potential to move from well to well, as required. The solar panels, battery and regulator and timer are trailer mounted, enabling it to be easily moved. The package includes a DC motor which readily adapts to most pump jacks, or to a special gear-driven pump which is available as part of the solar package.

Each solar panel is capable of producing 2.3 amps at 12 volts DC. Life expectancy of the panels is 35 years. They have no moving parts and are maintenance free and self-cleaning.

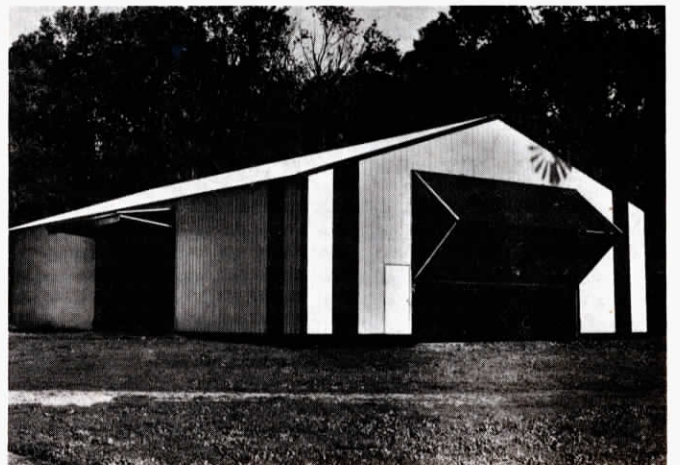
Batteries store power generated by

the solar array, making it available at night and through periods of cloudy weather. The typical battery system will have a storage capacity equal to 3 to 5 days of normal operation, explains Shaw. Motors are available in ¼ hp, 12 volt, ½ hp, 24 volt, and ¾ hp, 24 volt.

A timer and regulator are incorporated in the system so water can be programmed to be made available at selected times. A 5 to 1 gear reduction box is sealed to avoid contaminants, and is approved for use where potable water is required.

Prices range from \$3,000 to \$6,500, depending on depth of the well and desired output. For example, a well 270 ft. deep requires 10 solar panels to produce 500 gal. per day, and 14 panels to produce 2,500 to 3,500 gal. A well 30 ft. deep requires only 4 solar panels if the daily pumping requirement is 500 gals., and 8 panels if 2,500 to 3,500 gal. per day are needed.

For more details, contact: FARM SHOW Followup, Blue Sky Water Supply Co., P.O. Box 21359, Billings, Mont. 59104 (ph 406 259-0654).



“We can custom design the door to fit most any size opening in virtually any type of farm building,” says manufacturer.