

New "Grain Drain" For Farm Trucks

You never have to leave the cab of the truck to unload with the new "Grain Drain" from Brotzell Enterprises, Brock, Sask.

The unit's 9-in. auger mounts on the end of the grain box. It unloads to the side for elevating into a grain bin, or through the center gate for dumping at an elevator. Another option is the "Drill Fill" for loading seed in the field at planting time. The unit also will handle fertilizer.

The driver pulls alongside the bin auger and hopper, aligns the drain with the hopper, raises the truck box, and engages the hydraulic motor. There is no need to open and close the tailgate of the truck box because it can remain open at all times.

Conversion from side delivery to center dumping takes only a quick manual adjustment of the auger. With the drill fill mounted on the truck, there is no interference with the truck tarp, and no problems going through doors of a building.

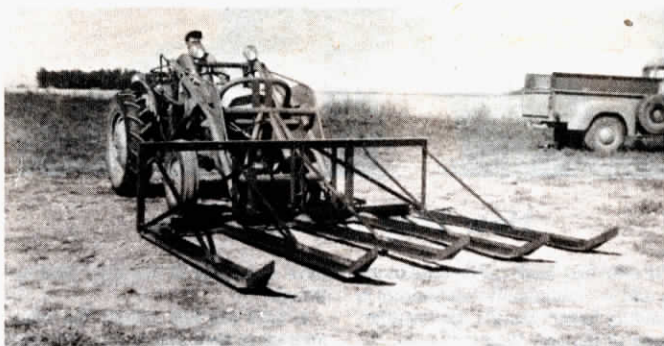
Cost of the "Grain Drain", including 9 h.p. hydraulic motor, is \$575.



Unit's 9 in. auger unloads to the side of the truck, or through center endgate.

The Drill Fill option is \$425.

For more information, contact: FARM SHOW Followup, Brotzell Enterprises, Brock, Sask. (ph 306 379-4301).



Each bale slot on the Meyer Bale Sweep picks up two bales.

Bale "Sweep" For Tractor Loaders

If you haven't switched to big round bales and don't want to, you'll be interested in the Meyer bale "Sweep", a tractor-mounted bale loader that lets you handle up to 12 conventional square bales at once without handling a single twine string.

"Our bale sweep takes the back-breaking work out of handling bales. It makes handling them as easy as moving big round bales with tractor equipment," explains Bill Lewis, who recently bought out the inventors, Ron and Al Meyer, all of Fairfield, Montana.

With the Sweep on your loader, you just drive down the row of bales, lowering the points of the teeth to pick up each bale. Replaceable shoe-

guides on each prevents them from digging into the ground. The 12-bale model has 6 slots, each holding two bales. To unload, you just lower the Sweep to the ground or bale stack and back away. Bales can be stacked in the field or on a rack, with several inches between each bale.

Designed for small to mid-sized tractors, Lewis says that, depending on field conditions, you can normally pick up bales without stopping the tractor. The 12-bale model sells for about \$950.

For more information, contact: FARM SHOW Followup, Bill Lewis, Meyer Ditcher Co., Fairfield, Mont. 59436.

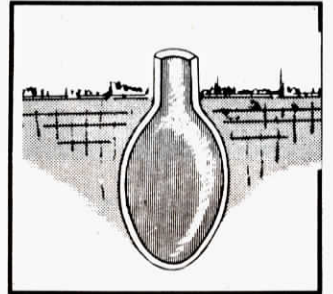
Plastic Liners For Leaky Cisterns

A leaking cistern can be a problem any time, whether water leaks in or out. Patching the leaks with mortar or chemical coatings may keep them tight for a while. But, many patched cisterns soon start leaking again.

To solve the problem, Thompson Plastics, of Melita, Manitoba, Canada, developed a polyethylene cistern liner that will hold water for many years and can be installed quickly and easily.

Each liner is custom made to fit individual cisterns. The company provides an order blank with space for sketching the cistern shape and showing dimensions—whether the cistern is square, rectangular, round or jug-shaped. A jug-shaped cistern would be lined up to where the top starts curving in. If there's an access hole large enough for a man to enter the cistern, a Thompson liner can be placed inside and installed, says the company.

Liners are available in 6, 8, 10 and 15 mil polyethylene and are formed as a big bag which is lowered into the cistern, unrolled and then pulled up around the sides. It's then fastened at the top, and refilled with water. Any protruding stones, reinforcing rods, rough mortar or old pipes should be smoothed prior to liner installation. Very rough or irregular surfaces may require covering with heavy building paper before putting in the liner. Instructions are provided for sealing the liner around pipes or other



openings. It usually takes two men only about two hours to install a liner.

To hold the liner in place, Thompson recommends ripping narrow strips of thin exterior plywood and attaching them (with cement nails) over the upper edge of the liner at the top of the cistern. Because polyethylene is inert, there's no taste added to the water.

Thompson liners are sold direct to customers and are in use all over Canada, across much of the U.S. and in many foreign countries. All seams are guaranteed. A typical liner for a 10 ft. dia. cistern, 9 ft. deep, weighs about 30 lbs. and costs from \$75 to \$100, depending on weight of plastic used.

For more information, contact: FARM SHOW Followup, Northern Fabricators, Box 265, Westhope, N. Dak. 58793. In Canada, contact: Thompson Plastics, Melita, Manitoba, Canada (ph 204 522-3241).

"OUTLASTS CONVENTIONAL FLY RIBBONS 2 TO 1"

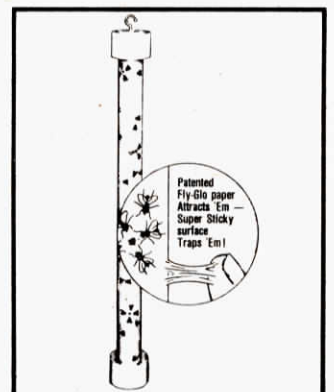
New "Fly Stik"

"It attracts flies, then traps them," says Farnam Companies about its new "Fly Stik" for controlling flies in livestock barns and buildings. According to Bobbi Spencer, marketing manager, the product works better than fly paper because it has more surface. It uses no chemical insecticide, vapor or attractant. Height of the product, which hangs up, is 24 in.

"Its attracting power is greater than a 25-watt electronic fly killer," says Spencer.

Fly Stik is available at farm supply stores, co-ops and tack shops.

For more information, contact: FARM SHOW Followup, Farnam Companies, P.O. Box 21447, Phoenix, Ariz. 85036 (ph 602 244-8261).



Fly Stik's orange color and simulated flies attract real flies.