

Flatbed Equipment Hauler With Steerable Rear Axle

French manufacturer Cochet came up with this flatbed trailer fitted with an electro-hydraulic steerable rear axle that's controlled by a sensor on the tractor drawbar.

A single hydraulic cylinder controls a tie rod on the back axle of the trailer, which is designed to drop flat to the ground. Flow of fluid to the steering cylinder is controlled by a mechanically-activated sensor on the

drawbar that turns the trailer's rear axle as the tractor turns, allowing much sharper turns in the field. The new-style steering axle could be fitted to other lengthy equipment.

Contact: FARM SHOW Followup, Cochet, Le Gue Ory, 72130 Souge le Ganelon, France (ph 43 97 30 07; fax 43 33 79 17).

Mobile Incinerator Burns Straw Off Fields

Straw burning was banned in Great Britain starting in 1993. Other European countries have similar bans. Farmers and manufacturers are scrambling to come up with new ways to eliminate or reduce the negative effects of crop residue left on fields.

One innovative company recently unveiled a prototype mobile straw burner that travels through the field, incinerating straw at temperatures over 1,000° and using the heat generated to "sterilize" the soil, killing virtually all weed seeds and disease organisms.

Adrian Harvey, Christopher Harvey, and Philip Bush of West Sussex, England, hope to have their mobile straw burner on the market within two years. It uses a patented new combustion jet to incinerate straw as it's chopped inside a stainless steel chamber. The chamber is preheated with a diesel

burner to get up to the high operating temperatures, and then the process is self-sustaining with heat generated from the straw. Damp patches, or green straw, may require an extra diesel heat boost. However, at temperatures of over 1,000°, Adrian Harvey says the burner leaves little ash and produces almost no smoke.

Flames from the burning straw are funneled down to an 18-ft. wide hood that heats the top 2 to 4 in. of soil up to 500°, killing 90 percent of weed seeds and disease spores.

One drawback is that the machine requires at least a 180 hp. tractor and can do just 25 acres a day. An optional "burn-only" machine that just burns off the straw and kills only the weeds on the surface, will work at the speed of a round baler, according to Harvey. (Farm Contractor Magazine)

ATV-Mounted Soil Sampler

A French company sells a hydraulic-powered soil sampler on an American-built Polaris ATV. Weight of the heavy-built unit is carried by the four rear drive wheels on the Polaris 6-wheeler.

An 8-hp. Briggs & Stratton motor drives a hydraulic pump that powers the soil testers sampler. The sampler raises up to the vertical position hydraulically, and is fitted with a cylinder that presses the core sampler into even the hardest ground. Samples are ejected automatically into a pan mounted at the rear of the ATV. Hydraulic cylinders also drop stabilizer legs to the ground to hold the ATV steady while samples are taken. The operator never has to get off the machine while taking samples.

Sells for about \$15,000, including the ATV. The hydraulic power unit can be used to power other equipment.

Contact: FARM SHOW Followup, Solagri, 62170 Brimeux, France (ph 21 06 17 15; fax 21 81 42 25).



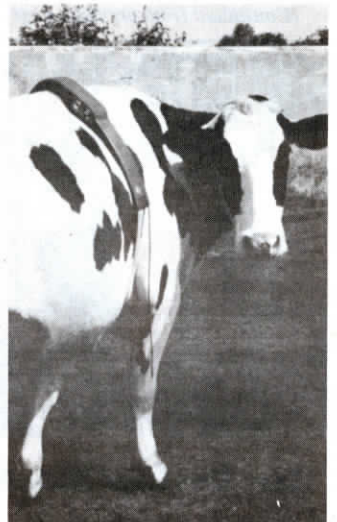
"Shock Belt" Helps Keep Cows Clean

If a cow lays down on wet ground or manure while wearing this new "shock belt", she gets a mild electrical jolt that forces her to get up and find a dry spot to settle onto.

Electrodes - one on either side - hang down below the cow's belly from a belt that wraps around her middle. When they come in contact with a wet surface, the electrical circuit is completed. The cow receives a shock on the upper part of her back from a pair of metal contacts on the underside of the belt. It's not enough to hurt the animal, says Jean-Marc Liegeois of NOE, the distributor. It's just enough to get her to move.

After wearing the belt for a short period of time, a cow gets trained to only lay down on dry ground. Then you can move the belt to another animal. You can put the belt back on again if bad habits ever redevelop.

Sells for \$260.
Contact: FARM SHOW Followup, NOE, B.P. 66, 78512 Rambouillet, Cedex, France (ph 34 94 19 00; fax 30 59 85 37).



"One-Of-A-Kind" French-Built 4-WD, 450-Hp Tractor

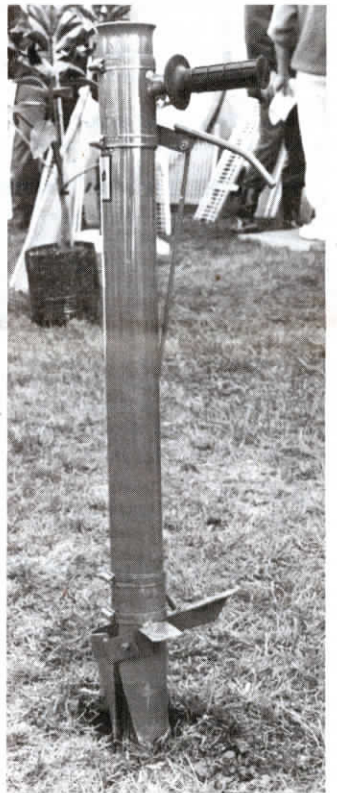
When you think of big tractors, you don't usually think of France. But this big BIMA tractor, built by BH Industrie in Velye, France, has power (400 hp) to match anything produced in the U.S. or Canada.

What's more, it's got a unique front-mount cab, front and rear 3-pt. and pto, hydrostatic transmission, and articulated steering with a unique pivot mechanism that allows both the front and rear ends of the tractor to swivel horizontally.

Power comes from a turbo-charged Cummins 6-cyl. in-line engine. The hydrostatic transmission consists of four separate Sauer pumps that supply oil to Poclain motors mounted on each wheel. Each pump and motor work independently but a sensor monitors wheelslip. If detected, oil flow to that wheel is automatically shut off but increased to the others. A single joystick controls the transmission. You simply push it ahead to go forward and back for reverse. Speed ranges from 0 to 18 mph.

BH Industrie makes models ranging from 290 to 450 hp. The steering joint is located 1/4 of the way back from the front of the tractor but weight distribution is equal on all four wheels. Both front and rear pto's have a choice of 1,000 or 2,100 rpm's.

Contact: FARM SHOW Followup, BH Industrie, 67 Rue Principale, 51130 Velye, France (ph 33 26 66 41 27). (Top Cultures)



Hand-Held Tree Planter

You can plant a lot of tree seedlings in a short amount of time with this new hand-held tree planter.

Designed and manufactured in Australia, the 2 1/2-in. dia. hand planter has a hinged jaw on bottom that's pointed when closed. You push it into the ground with a side-mounted foot pad and then drop a seedling into the top of the tube. Then you just pull on the handle that opens the jaw, dropping the seedling into the ground. As you pull the planter out, dirt settles around the plant.

Contact: FARM SHOW Followup, Peter Nunn, Nufab, P.O. Box 171, 28 Moore Rd., Dongara W.A. 6525 Australia (ph 099 27 1297; fax 61-99 27 1697).