

BALE DIAMETER CAN BE 4 OR 5 FT.

Round Baler Features Adjustable Chamber

"It sells itself," says Frans Poley, managing director of British Lely Ltd., Wiltshire, England, manufacturer of a new round baler with a totally new bale forming design that features a semi-fixed bale chamber that adapts to the differing needs of hay, straw and round bale silage.

The bottom half of the unique bale chamber consists of eight heavy duty rollers much like those found on other close-chambered balers. But the top half of the chamber is equipped with three short swing arms equipped with chains and slats, like those found on chain-type balers. These swing arms allow the baler to adapt to changing conditions, altering both the size and density of the bales.

In straw, for example, where you want to pack as much material as possible into a bale because of its light weight, the baler makes a 5-ft. dia. bale that's packed densely throughout. In hay, however, where you want a soft center to aid drying and dense outer layers to repel the elements, the swing arms in the chamber allow the hay to tumble loosely when the bale

begins forming and then, as the bale reaches its full size, the arms pack it tightly on the outer layers. To make round bale silage the baler packs tightly throughout to keep air out, making a dense 4-ft. dia. bale that's easier to handle. Bale size can be adjusted from 4 to 5 ft. in dia.

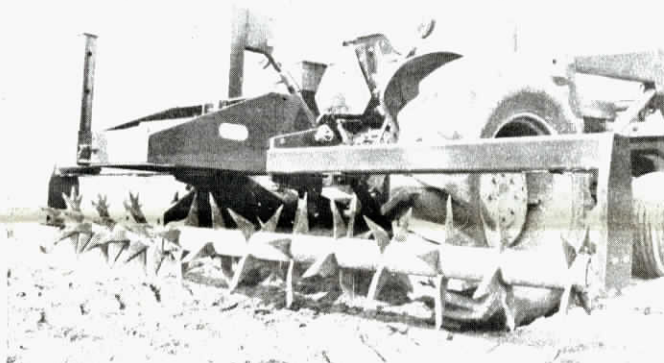
"Farmers like it because it lets them adapt to changing conditions and custom contractors like it because they don't have to buy two balers. We're selling all we can produce," Poley told FARM SHOW, noting that the baler also features a unique new dual twine tube that reduces wrap time 50%.

The baler is the first one for Lely, which is primarily a manufacturer of tillage tools. It's being sold throughout Europe and in Japan and the company hopes to bring it to the U.S. and Canada in the near future.

For more information, contact: FARM SHOW Followup, Franz Poley, British Lely, Ltd., Wootton Bassett, Wiltshire, England SN4 7DB (ph 0793 852101).



New Lely baler has rollers at the bottom, and adjustable chains and slats at the top.



Some farmers set roller at an angle and use Aer-Way in lieu of a disc on plowed ground.

"AER-WAY" BREAKS UP AND AERATES CRUSTED GROUND

Slicing Tillage Tool

A new tillage tool that slices through the top 7 in. of soil with rows of large knives has been introduced to North America after a dozen years of successful use in New Zealand.

The Aer-Way features knife-like tines that dig 7 in. deep, breaking up surface soil compaction as well as aerating the soil.

Matt Mayer, sales engineer for Holland Equipment Ltd., Norwich, Ont., North American distributor, says the machine can be used on pasture and hay ground, in the early spring or just after harvest, to aerate the ground. New Zealand tests show 20% yield increases in fields aerated with the Aer-Way, says Mayer.

The implement is also being used on newly-planted soybean and corn ground to break up crusty soil. Mayer says it's possible to roll corn up to 5 in. high without damaging the crop.

Setting the rollers at angles — up to 10° — gives the machine a rototiller-type action on the soil. Some farmers set the roller at an angle

and use it in lieu of a disc on plowed ground, or in the fall to break up and incorporate bean trash.

There are four beveled tines per cluster on the ground-driven roller. The clusters are spaced 7½ in. apart and are self sharpening. Mayer adds that "they're made of heat treated steel and won't break, even in rocky conditions."

A ballast stand on the Aer-Way lets you add weights for better penetration in hard soils. Sizes from 4 to 23 ft. wide are available. The unit attaches to Cat. I and II, 3 pt. hitches.

The 11-ft., 8-in. model sells for right at \$2,500 and requires a 40-60 hp tractor, depending on soil conditions. The company is setting up a dealer network and welcomes dealer inquiries.

For more information, contact: FARM SHOW Followup, Holland Equipment Ltd., 20 Phoebe St., Norwich, Ont., Canada NOJ 1P0 (ph 519 863-3414).



Self-Propelled Big Baler Lets You Adjust Bale Size

New from France is the world's first self-propelled big round baler which also features a variable bale chamber. Bale size can be set anywhere from 2 to 6 ft. in dia. A large indicator light in front of the driver advises when the exact diameter has been reached, thus assuring uniform size bales. Bale width is 4 ft.

Manufactured by Rivierre Casalis, the self-propelled RC121 is a converted pull-type. It's catching on especially fast with European farmers who bale flax straw. "Working at speeds of 10 to 12 miles per in flax, it allows the operator to look forward," notes J. M. Hammann, sales manager.

Power is provided by a 70-hp. 4-cyl. Deutz engine. Height of the pickup is controlled hydraulically. Twine is fed via a telescopic tube and, as standard equipment, the baler is fitted with a new automatic twine-wrapping robot which allows automatic repetition of any twine wrapping cycle programmed by the operator. The operator, by flipping a switch, can repeat the tying cycle.

For more information, contact: FARM SHOW Followup, Rivierre Casalis, B.P. 1759, 45007 Orleans, Cedex, France (ph 38 726900).