

Children use pedal-powered toy tractors to pull a miniature sled.

NEW TRACTOR PULLING COMPETITION FOR KIDS

Here Comes The New "Pedal Power Pullers"

During a pulling contest for toy tractors equipped with miniature airplane engines, an observer called out, "Why don't you adults get out of there and let the kids have some fun?"

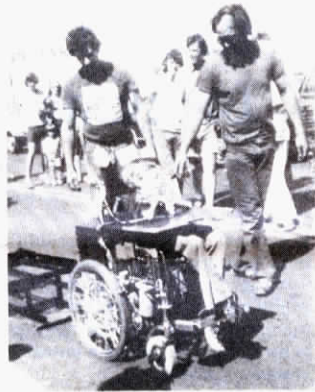
This challenge led Roger Haselhoff and several others in Aurelia, Iowa, to organize the National Association of Pedal Power Pullers (NAPPP, or NA3P). They use modified pedal-powered toy tractors to pull a miniature sled.

To preserve the sport for children, NAPPP provides all the tractors and the sled for each pull and charges no entry fees.

The sled used for pedal pulling is patterned after those used in regular tractor pulls and cost about \$450 to \$500 to build. Pedal powered tractor pulls are sponsored by local organizations or businesses for community celebrations, etc. The Aurelia group now has 12 or 15 pulls scheduled for 1980, and plans to organize an invitational contest in Aurelia in late summer for the first three winners in each class from all contests held during the summer. They also plan to have 14 tractors and three sleds in Sioux City, Iowa, during the national Jerry Lewis Telethon next fall and will encourage other groups to do the same thing in other locations.

The sponsoring organization is required to provide an announcer (hopefully someone familiar with many of the children or at least with their parents), some people to help set up and run the contest, and a garden tractor to pull the sled back to the starting point.

Haselhoff says an Illinois group used similar tractors in 1979 but pulled a drag to which weights were added as it passed certain points. He doesn't think this is quite fair because dropping a weight on the drag may stall the puller where he might have continued moving if the weight had been added more gently.



Muscular Dystrophy poster boy was able to pull sled with his own powered wheelchair.

It costs about \$150 to \$175 for each modified tractor, says Haselhoff. Tires are screwed to the rims to prevent slippage on the rims. Heavier axles, pedal crankshaft and pedal arms are added. Standard bicycle pedals are installed and No. 40 roller chain is used to drive the rear wheels which are fixed on the axle to keep the tractor moving as straight ahead as possible.

Haselhoff says NAPPP charges sponsors of pedal-power pulls \$250, plus 40 cents per mile round trip for each tractor pull they operate. "We've had inquiries from people interested in operating such pulls for profit. But we're not interested. We like the way we have it set up for the kids now and want to keep it that way," he points out. "Any kid can try his luck now, whether he can pay an entry fee or not. And, when we furnish the tractors, it's not a question of who can afford to do the most elaborate job of modification."

For more information contact: FARM SHOW Followup, Roger Haselhoff, NAPPP, Aurelia, Iowa 51005 (ph 712 434-5584).



Esther, shown here being pregnancy-tested by herdsman Collins Cutler, is still going strong into her 18th litter.

PRODUCTIVE PIGS PUMPING OUT PORK

These Super Sows Are Very Prolific

How many farrowings do you expect from a good productive sow? If you think six or seven is about right, what would you say about 18 or even 23?

At the Walnut Grove Research Farm in Atlantic, Iowa, they have a sow named Esther. She is currently carrying her 18th litter. From the previous 17, she has produced 163 pigs of which she has weaned 141.

That's great, but at Pig Co-op, Inc. of Bloomfield, Neb., they had a "super sow" that produced an unbelievable 23 litters before being shipped to market last year. Identified as No. 6002, she produced well over 200 pigs during her lifetime and weaned a large percentage of them. She finally had to be shipped because she was becoming lame after spending most of her 11 years on concrete.

No. 6002 produced her first litter in 1969, although there were never any records kept of her first two farrowings. She had a high mark of 18 born

alive, 17 weaned and a low of 9 born, 8 weaned. Herdsmen at Pig Co-op say she averaged well over 9 pigs weaned per litter over her lifetime.

In Iowa, Esther is pregnant for the 18th time. Her "high litter" so far has been 14 live pigs born, 13 weaned. Her low was 7 born, and none weaned when they froze to death outside. So far, she has averaged over 8 pigs weaned per litter. Her herdsman, Collins Cutler, says she is still going strong.

Esther has been getting the standard 4 X 4 Walnut Grove feeding ration which consists of 4 X 4 Sow Wafers during gestation and 4 X 4 Sow Guard during pre-breeding, pre-farrowing and lactation. Her weight has held steady at about 450 lbs. for the past three years.

Sow 6002 was a Hampshire-Landrace-Yorkshire cross. Esther is a mix of Hampshire-Spotted Poland China-Yorkshire-Duroc.



Manure Spreader Art

Some farmers join tractorcades to Washington, others stay at home and do what they can.

One Kansas farmer we came across recently sacrificed his pitchfork, an old manure spreader and some paint to make a point to passersby on the highway adjacent to his farm. The

sign, faded after broadcasting its message for several months, reads: "This manure spreader is full of - - - and so is our farm bill. Let's take it out and dump it!"

Are you listening, Washington?