

CUSTOM CUT TO MATCH TIRE SIZE

Low-Cost Reliners Extend Tire Life

"With liners you get extra life from tubed tractor and wagon tires that, although they have good tread, you might normally scrap due to exposed inside cords, breaks, and cuts," says Steve Schlecht, president of Gempler Tire and Repair Shop Supply, Stoughton, Wis.

He notes that liners, popular several years ago as a way to cut costs, are coming back for the same reason. The 4-ply cord liners form a protective barrier inside the tire between the tread and the inner tube. The barrier keeps rocks, thorns and sharp objects from poking into the tube.

To install, the reliner wraps around the inside of the tire and overlaps to prevent pinching the tube. Tube pressure keeps the reliner in place.

Schlecht notes that liners are custom-cut to match tire size. He adds that tires equipped with liners should be inflated with 15 to 20% higher pressure than the manufacturer's recommended rates. Reliners aren't for cars, trucks or other equipment operated at highway speeds.



Tube pressure keeps tire liner in place.

Reliner prices range from \$6.75 for a 4 by 15 tire, to \$79.50 for an 18.4 by 38 tire.

For more information, contact: FARM SHOW Followup, Gempler Tire and Repair Shop Supply, P.O. Box 617, Stoughton, Wis. 53589 (ph 608 873-8154).

USES EXISTING SNOOT

"Stalk" Retriever

A rough harvesting season, plagued with lots of down corn stalks, led Ed Seifert, Auburn, Ill., to developing a new style Stalk Retriever.

"If the snout tip can get under the stalk, this retriever will pick it up," reports Seifert, whose invention fits on existing header snouts.

It uses conventional gathering chain to pick up and carry down stalks to the feeder auger. Each chain, hydraulically and independently powered off the reel drive, runs at 10 to 20 rpms.



Conventional gathering chain picks up and carries down stalks to feeder auger.

Installation involves cutting two holes in the snout for the chain to exit and enter. Two sprockets, plus an idler, fit inside the snout for the gathering chain to ride on. Add-on templates protect the snout from wear. Each snout retains its flexibility.

Seifert notes that Stalk Retrievers can be installed on just the end snouts or on every row. When not needed, such as in good standing corn, the Stalk Retriever chain can be shut off.

Tri-R Innovations, Gibson City, Ill., is marketing the new product for \$595 per row.

For more information, contact: FARM SHOW Followup, Tri-R Innovations, 628 S. Sangamon, Gibson City, Ill. 60936 (ph 217 784-8495).

Speedy Soil Sampler For "Three Wheelers"

Latest new accessory for ATV's is Concord's soil sampler that mounts on the back of three or four wheelers.

Powered by a 3-hp gas engine, it uses a 1.5 by 20-in. cylinder to sample to a depth of 12 in. Comes with four replaceable tips and a stainless steel probe.

"In the spring, when fields are muddy and the ground's unfrozen, ATV's can get into fields that four-wheel drive pickups can't handle,"

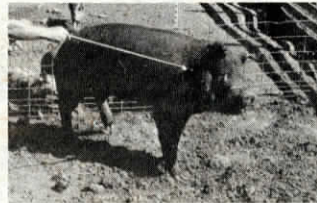
SAFER WAY TO TREAT UNRULY ANIMALS

Syringe Injects From 3 Ft. Away

With the new Safety Syringe you don't need to crawl in and out of pens to give animals shots. Plus, you can treat sows in farrowing crates without the risk of smashing your hands between the bars, reports Ed Dillon, Centerview, Mo., distributor.

Key to the Safety Syringe is that the syringe's plunger has a 41½ in. long stainless steel handle. By reaching over a gate, or through a crate, you can give hogs, cattle and other animals shots without standing right next to the animal. Dillon notes that the new syringe also works great for giving shots to cattle while riding on horseback.

To inject an animal, simply pick the spot to give the shot, insert the needle and push the handle/plunger in. Dillon says you can vaccinate 40 sows in 15 minutes when they're confined in a large pen. You refill the



Stainless steel syringe handle is 41.5 in. long.

syringe the same as any conventional syringe. The only difference is that there's a longer handle.

The 10 cc syringe has a universal luerloc fitting for needles. Sells for \$24.95.

For more information, contact: FARM SHOW Followup, Safety Syringe Industries, Ed Dillon, Rt. 1, Box 62, Centerview, Mo. 64019 (ph 816 633-7362).

ALSO GIVES TEMPERATURE IN FAHRENHEIT AND CENTIGRADE

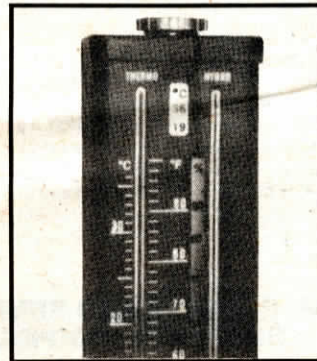
Handy New Relative Humidity Gauge

You don't have to be a mathematician to calculate relative humidity with the new Hygromat from Lab Systems, of Berkeley, Calif.

Designed for use in the home or inside livestock, poultry and other buildings, it has an analog computer, similar to a slide rule, built in which gives you an instant reading of relative humidity just by turning a knob. The gauge also gives you the current temperature in both centigrade and fahrenheit.

The manufacturer notes that unlike dial-type gauges, which are "notoriously inaccurate," the new Hygromat measures humidity with accuracy, thanks to its built-in "wet bulb" system.

Sells for \$79.90.



Contact: FARM SHOW Followup, Lab Systems, 1409 Cypress St., Berkeley, Calif. 94703 (ph 415 525-0947).

notes Virgil Mahlum, marketing director.

For more details, contact: FARM SHOW Followup, Concord Inc., 2800 7th Avenue North, Fargo, N. Dak. 58102 (ph 701 280-1260).

Concord has developed probe that takes solid-core soil samples, even in frozen ground.

