

"BUILT WITH A LOT OF DETAIL"

Half-Scale Antique Tractor Collection

"We've had tremendous interest. They're built with a lot of attention to detail," says Bob Zink, Wapakoneta, Ohio, about the six half-scale antique tractors that he and friends Bud Hengstler and Richard Etzkorn built.

The tractors include a Deere Mini "L", Allis-Chalmers G, Farmall H, Massey Harris Pony, Oliver 60, and Deere 4010 Hi-Boy equipped with a wide front axle. All tractors except for the Deere 4010 were made using the transmission and differentials from International Cub Cadet riding mowers. The Deere 4010 is equipped with the transmission and differential from a Deere 110 riding mower.

"We build them as close to the original models as possible and take them to 12 to 14 antique tractor and engine shows each year. People give us a lot of compliments and we're always getting offers to buy the tractors, but we won't sell.

"The Allis-Chalmers G was the first tractor we built. It caused so much excitement that we decided to build the Mini L. The original model was manufactured from 1937 to 1946. Our half-scale model is powered by a Kohler 7 hp gas engine. We used 1 1/2-in. dia. steel pipe to make the frame. The 6-in. high front tires and 12-in. high rear tires are off a Montgomery Ward walk-behind tractor. The rear axle is from a Cub Cadet. We used steel pipe and rods to build the front axle. The steering wheel and steering gear are from a Cub Cadet.

"The transmission has three forward speeds and one reverse. Top speed is 4 mph. The original model L was started by hand cranking it. However, ours has an electric start engine. The battery is mounted on the right side of the tractor and the starter is mounted under it. We used 16-ga. sheet metal to make the hood. The Nelson muffler is off an old garden tractor and is almost the same shape as the L's original muffler."

The Allis-Chalmers G is a rear engine tractor that was made from 1950 to 1957. "It was a great 1-row truck garden tractor that could be equipped with 14 different implements, most of them designed to be mounted under the driver's feet," says Zink.



The Deere 4010 Hi-Boy is equipped with a narrow front axle. The half-scale antique tractor is geared down to permit very slow operation.

"Our half-scale model has 18-in. rear tires, 8-in. front tires, and a hydrostatic transmission."

The Farmall H has 18-in. tires on back and triple rib 6-in. front tires.

The Oliver 60 has side curtains with louvers. The men wrapped a section of sheet metal around 4-in. dia. clay field tile to make the lower part of the instrument panel. The louvers were made from 1/2-in. dia. and 3/8-in. dia. steel rod.

They cut an air conditioner freon tank in half to make the rounded hood and gas tank on the Massey Harris Pony.

The Oliver and International tractors are both equipped with belt pulleys that are for looks only.

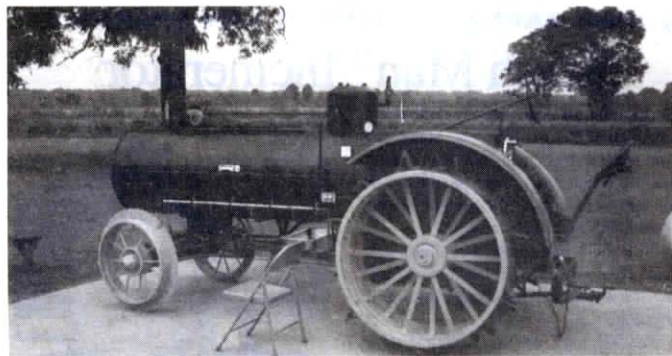
The Deere 4010 Hi-Boy is equipped with a chain-driven, reduction gearbox on each wheel. "It's really fun to drive because it can go so slow. You can hardly tell the tractor is moving," says Zink. "At shows we sometimes turn the steering wheel all the way to the right and use a rubber strap to lock it into position, allowing the tractor to turn around and around in a tight circle without a driver."

The three men also built two wire-tie mini balers. One baler makes 12 by 6 by 8-in. wire-tied small square straw bales, and the other makes 10 by 6 by 4-in. small square bales.

Contact: FARM SHOW Followup, Bob Zink, 225 N. Rauthland, Wapakoneta, Ohio 45895 (ph 419 738-6615).



Massey Harris's hood and gas tank were made from an air conditioner freon tank.



Made out of junked parts, Taylor's "Tractor-Cue" looks like a Case steam tractor.

HOBBY BECAME FULL-TIME JOB

"Tractor-Cue" Makes Outdoor Cooking Fun

After getting started in the barbecue business as a part-time hobby, Jacksonville, Ark., farmer Jack Taylor drummed up so much business he turned it into a full-time job. He owes his success, in part, to the unique big barbecue machine he built out of old tractor parts.

"After I decided to build my 'Tractor-Cue', it took about five years to find all the parts for it and another 8 months to fit and weld them all together," says Taylor. "I built it to look as close as possible to an early 1900's Case 30 hp steam tractor, patterning it after a real one they have in the museum in Scott, Ark."

A big break in searching for parts came when Taylor found a 1934 Deere D or G tractor in a neighbor's grove. The tractor had the big steel wheels he'd hunted for all over Arkansas. So he hauled the tractor to his farm, dismantled it, and used much of it to build his look-alike Case.

Taylor's Tractor-Cue weighs approximately 6,000 lbs., is 14 1/2 ft. long and has a smokestack that's 8 ft. high off the ground at the top. He parks it on a concrete pad outside his house - it can be pushed but doesn't run on power of its own - and hauls it to barbecues in a canopied trailer he had specially built for it.

The Tractor-Cue has five gas burners that

put out 65,000 Btu's apiece and two gas burners that put out 25,000 Btu's apiece. It also has a firebox that burns 2-ft. long pieces of stove wood.

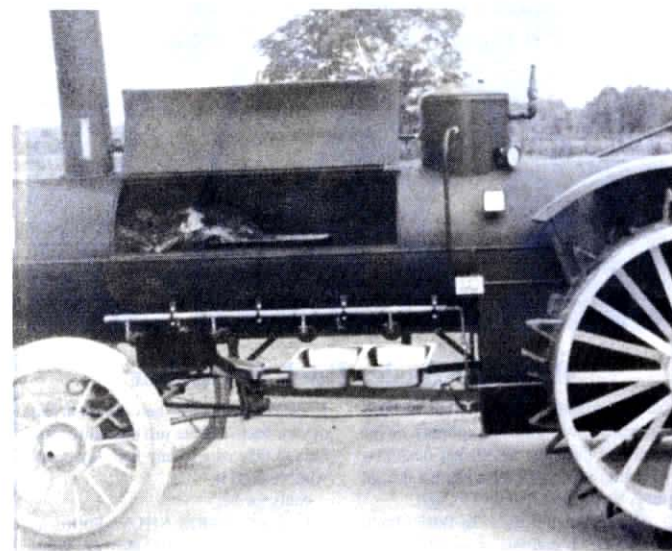
Capable of cooking 500 lbs. of meat at a time, it has a 6-ft. long by 2-ft. wide gas steak grill that'll handle 50 steaks at a time. Or he can cook up 50 hamburgers or 250 hot dogs on the grill at a time.

Since starting out as a part-time weekend venture to supplement his farm income in the middle 1980's, Taylor and his barbecue machine have become something of celebrities in central Arkansas - and elsewhere.

He travels a five-location circuit, including Little Rock, every week, May through December. The barbecue machine is licensed as a mobile restaurant by the state health department.

Taylor has also competed in many state and national barbecue contests, winning the Arkansas State Barbecue Championship with his ribs in 1990. Leaving the Tractor-Cue behind, he's also competed in world class competition in Ireland and the former Soviet Union.

Contact: FARM SHOW Followup, Jack Taylor, 1810-A South Highway 161, Jacksonville, Ark. 72076 (ph 501 982-3791).



Barbecue machine has seven gas burners, and can cook 500 lbs. of meat at once.