

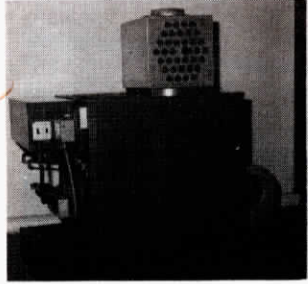
**ONLY HAS TO BE CLEANED  
TWO OR THREE TIMES A YEAR**

## First Automatic Waste Oil Heater

First on the market with a fully automatic "home size" waste oil heater requiring very little maintenance is Clean Energy Inc., Leola, Penn.

"Unlike other waste oil heaters on the market, we do not vaporize the oil. We burn it all and eliminate the daily or weekly cleanout required of conventional waste oil heaters. Our new Clean Burn only has to be cleaned two or three times a year, explains Elvin Martin, sales manager. "An electric eye watches the flame, providing automatic, thermostatically controlled combustion of oil inside the heater. "Other companies may use the term thermostatically controlled but it simply applies to the fan. With the Clean Burn, combustion of the flame is thermostatically controlled, as well as the fan."

Martin notes that the Clean Burn will burn crankcase oil, transmission oil, hydraulic oil, or any combination of these oils. "By using a small amount of air through our special nozzle and burning assembly, we get a totally clean burn, producing a gray-white powder that needs cleaning only two or three times a year, depending on use. Burns clean with no smoke."



**On-off control of the flame in the new Clean Burn waste oil heater is thermostatically controlled.**

Prices range from \$1,638 for a 70,000 btu manual-control unit, to \$3,024 for a fully automatic Clean Burn with on-off thermostat and rated at 335,000 btu's. Oil consumption per hour ranges from 1/2 gal. in the small manual unit to upwards of 2 1/2 gal. in the largest (335,000 btu) automatic unit. A 200,000 btu unit with automatic on-off thermostat flame control is also available.

For more details, contact: FARM SHOW Followup, Clean Energy Inc., 83 Graffdale Road, Leola, Penn. 17540 (ph 717 656-2811).

**WORKS WITH ANY BRAND, SIZE CHAIN SAW**

## Your Chain Saw Powers This New Log Splitter

Your chain saw can do double-duty in the woods with a new introduction from a California company. Leeco Manufacturing, of Calimesa, is offering a new-style log splitter which uses your chain saw for power.

Popular in Europe for some time, the Leeco splitter is just being introduced into North America. It puts out up to 12 1/2 tons of splitting force from medium-sized chain saws ranging from 1.6 to 4.0 c.i.d. "Any chain saw will run it, but the smaller mini-saws will put out somewhat less force," explains Leeco's Robert Krichbaum. "Larger chain saws will not hurt the splitter which has built-in relief valves."

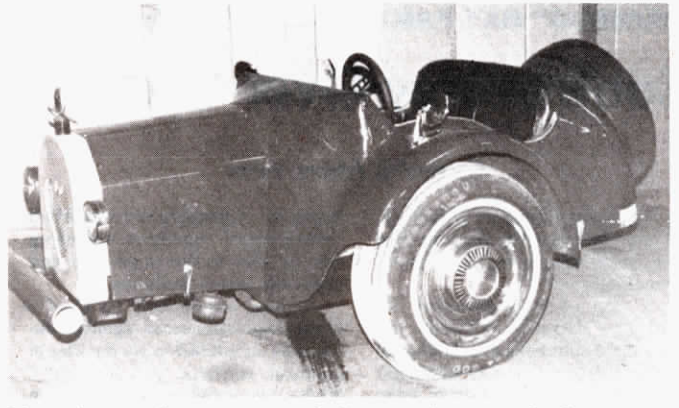
The chain saw splitter will handle logs up to 19 in. long and up to 3 ft. in diameter, depending on the type of wood, according to Krichbaum. A 4-in. dia. hydraulic cylinder pushes the log against a 2-step wedge for

quick splitting. "The log starts to split on the wedge's cutter face and, as it proceeds to split, the spreader wings open up the log much faster than with a normal wedge," explains Krichbaum. Splitting cycle is 15 seconds out and 10 seconds back.

To attach the saw to the splitter, just remove the bar and chain from the saw, put the power head into Leeco's bar and attach the cutterless chain. The cutterless chain powers the hydraulic pump. Krichbaum says installation time averages 4 to 5 minutes.

The entire splitter is light enough (129 lbs.) to pick up and carry. It fits into most car trunks for transport. Retail for \$569. An optional wheel kit and a log marker attachment are available for \$34.

For more information, contact: FARM SHOW Followup, Leeco Mfg., P.O. Box 331, 1103 Calimesa Blvd.,



**Mysterious roadster appears to balance on just two wheels.**

**APPEARS TO DEFY GRAVITY**

## Would You Believe A Two-Wheeled Car?

Remember that two-wheeled car which was featured in FARM SHOW two years ago — the one that appears to defy gravity?

Since our report, what started out as one man's hobby has now mushroomed into a booming business called Two-Wheel Fun. The company is selling plans, instructions, car kits, and other components for the two-wheeled vehicle.

The mysterious looking car appears to defy gravity as it chugs along, balanced on its two wheels.

The secret is inside the soft radial tires. The tires are just shells that hide the two support wheels placed 13 in.

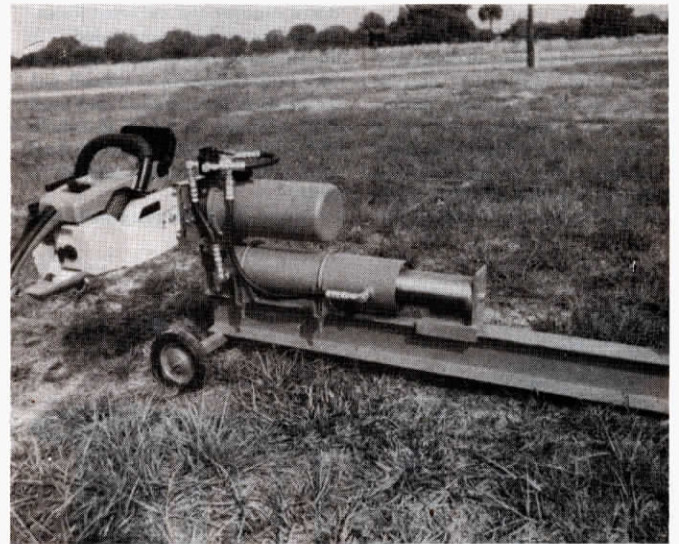
apart inside the tire and chain-driven by a small motor under the hood.

Most of the weight is balanced over the wheels. The car is operated at 4-5 mph, and must be driven on a hard, level surface. It is mainly a parade vehicle.

Car plans are \$75, and a parts list and catalog is \$5. Pictures, T-shirts, and belt buckles are also available.

Says car designer, Pete Schlatter: "We guarantee that the car will run if made according to our plans."

For more information, contact: FARM SHOW Followup, Two-Wheel Fun, P. O. Box 548, Francesville, Ind. 47946 (ph 219 567-9158).



**Chain-saw powered splitter develops up to 12 1/2 tons of splitting force.**

Calimesa, Calif. 92320 (ph 714 795-2594 or 795-6443).

A similar chain saw powered log splitter is being built by a Florida company, LPI Sales, of Kissimmee. Owner Harold Phelps says the LPI splitter produces 12 1/2 tons of force to split logs up to 21 in. long. "Our

splitter produces power that matches the larger units and has a much lower price in comparison," Phelps notes. The LPI splitter sells for \$498.

For more information, contact: FARM SHOW Followup, LPI Sales, Inc., Box 1433, Kissimmee, Fla. 32741 (ph 305 847-0719).