

## DISPENSES PELLETS OR GRAIN

# New Cattle Feeder is Tongue Powered

You can selectively feed liquid protein, pelleted feeds, and whole or processed grain in the new "tongue-powered" Cattle Drive feeder introduced by GTA Feeds, Sioux Falls, S. Dak. Animals themselves provide the power to operate this first-of-its kind automatic feeder. Here's how it works:

A 120 bu. grain tank and metering system is positioned above a 1½ ton-capacity liquid supplement tank which is equipped with a lickwheel in each of four compartments. A flexible shaft connects the lick-wheel to the metering mechanism of the grain tank. As the animal licks the lick-wheel and turns it, the shaft turns and a preset amount of grain (pellets, whole or coarse-ground) is released and fed into a pan located adjacent to the lickwheel.

"Cattle Drive gives cattlemen the freedom to self-feed a limited ration without having to add unnecessary ingredients," explains Ron Claussen communications director. "It also lets cattlemen regulate rations according to their own special needs."

The feeder can be calibrated to automatically dispense from 1 to 10 lbs. of dry grain per pound of liquid. Consumption of liquid is controlled by special plates which regulate how much of the wheel surface is exposed.

"For example, a rancher wintering cows might want 2 lbs. of barley fed, or, if wintering calves, may want 6 lbs. of barley released," Claussen explains. "The feeder can be used to winter or flush brood cows, supply

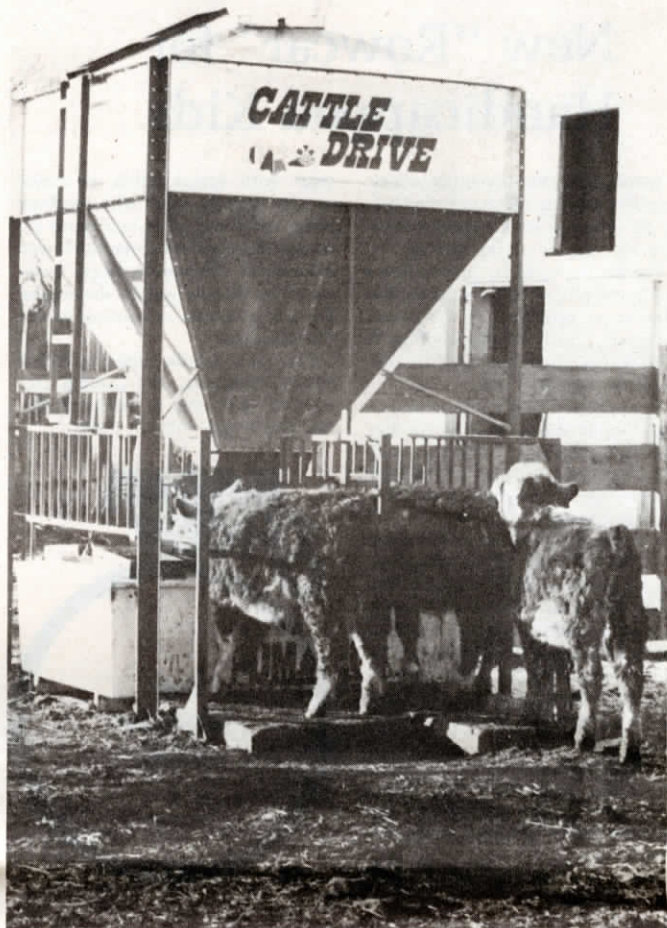
extra protein and energy during lactation, for supplementing pastures or low-energy crop residues, and other uses.

Claussen notes that the feeder has been tested by individual ranchers and by researchers at South Dakota, Montana and Idaho state universities.

"It worked satisfactorily and with minimal labor," reports Montana researchers. They note that it took about two weeks before all cattle associated the lickwheel and the grain. Some used it more than others and one heifer refused to lick the wheel at all. Two animals wouldn't lick the supplement but would crowd out other heifers and eat the grain when it dropped into the bin. Cattle were fed a ratio of 1 lb. of liquid supplement to 4 lbs. of steam-rolled barley for two months, with the amount of barley gradually increased thereafter until the cattle were consuming 10 lbs.

Cattle Drive is available through GTA outlets in Minnesota, the Dakotas, Nebraska, Iowa and several western states, and will soon be available through livestock equipment dealers in states not served by GTA.

For more details contact: FARM SHOW Followup, Ron Claussen communications director, GTA Feeds, Box 1447, Sioux Falls, S. Dak. (ph. 605 339-1050).



One Cattle Drive feeder accommodates up to 80 animals (20 per feeding station). Automatic mechanism can be set so animal gets from 1 to 10 lbs. of concentrate for each pound of liquid supplement.

## VIRTUALLY ELIMINATES WASTE

# Self-Feeding Cable Catching on Fast

"It's catching on fast," says William Crist, inventor of the unique Posi-Shock cable for self-feeding livestock from any pile or stack of feed. "It gets the job done without expensive equipment and virtually eliminates waste."

The Posi-Shock Cable is placed approximately 3 ft. high in front of the feed. Livestock reach over and under the cable to self-feed. Daily consumption can be regulated by how close the cable is set to the pile or stack.

The cable consists of alternately spaced "ground" barbs and "hot" barbs. It's energized by an electric fence charger. "The shock livestock receives is only at the point of body contact. It only gives them a sting—just enough to keep them away from

the cable," explains Crist. "Since it contains its own ground, it works regardless of what cattle are standing on, or the weather conditions."

Crist points out that the cable's operation is much gentler and different than a conventional fence: "When cattle touch an ordinary electric fence, they get shocked throughout their entire body, which scares them away. If the ground is frozen or snow packed, they may get no shock at all and won't pay any attention to the wire. This doesn't happen with the Posi-Shock cable. It works in all kinds of weather, and doesn't scare cattle away."

For more details, contact: FARM SHOW Followup, Crist Products, Wessington Springs, S. Dak. 57382 (ph. 605 539-5782).



Posi-Shock cable is made up of "hot" and "ground" barbs alternately spaced 1 in. apart. It's energized by an ordinary electric fence charger and only stings animals at point of body contact. Costs \$.95/ft.