

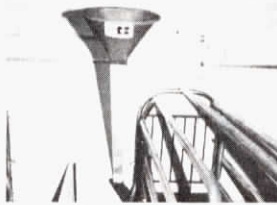
# New Products For Pork Producers

## "Rear Feed" Extension For Farrowing Crates

"This system lets you cut costs two ways," says Richland Builders of its new "rear feed" extension tube for farrowing crates.

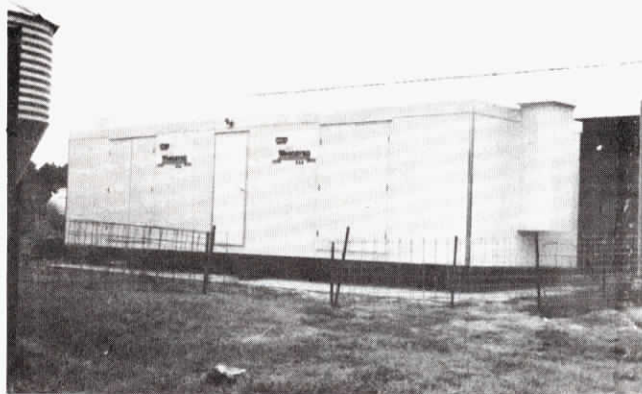
First, the tube lets you farrow up to twice as many sows in a given size building by eliminating the need for side or end alleyways. Feed placed into the 12 in. funnel slides through the 5 ft. long tube (3 in. sq.) into the metal bowl-type feeder. You can load up to 10 lbs. of feed into the tube at one time for gravity feeding into the bowl as it's eaten by the sow.

Second, the new "rear feed" tube extensions are simple in design and carry a lower price tag than you might have ex-



pected — \$58 per unit, including the metal feeder. Standard tube length is 5 ft. Longer tubes can be custom ordered. System easily adapts to virtually all types of farrowing crates.

Contact: FARM SHOW Followup, Richland Builders, Highways 77 and 78, Richland, Iowa 52585 (ph toll free 800 452-1006, or 319 456-6981).



## The Weenavan

"This new concept is catching on fast," says Ronald Olson, product manager of the controlled environment Weenavan, developed in England and being marketed by Triple F Feeds, Des Moines, Iowa. "We have 24 units operating in eight states and, based on about 16,000 pigs which have been moved through them, results are meeting or exceeding expectations."

The Weenavan program consists of a special diet which allows you to wean pigs at 14 to 21 days of age and have them gain ¼ lb. or more per day for the next 28 days, according to Olson. "It's the best building of its type in America, providing a warm, dry environment that makes early weaning possible and profitable," says Olson.

Based on results to date, own-

ers reportedly are getting close to an extra four pigs per sow per year. One owner averaged 1 lb. of gain on only .68 lbs. of feed on pigs going into the unit at 21 days of age and coming out 28 days later.

Weenavans are super insulated and covered with a troweled-on plastic "skin" that's weather and rust proof. Inside cages are stacked three high and provide a separate feeding space for each pig. Models come in six sizes ranging in cost from \$15,500 (1 room handling 96 pigs) to \$33,500 (two rooms that together handle 120 pigs at a time). Lease programs also available.

Contact: FARM SHOW Followup, Weenavan, Triple F Feeds, 10104 Douglas Ave., Des Moines, Iowa 50322 (ph 515 276-5406).

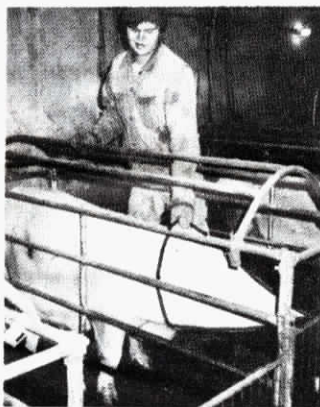
## "The Hookor"

"It really simplifies handling sows and boars," says Delmar Lynch, South Dakota swine producer and inventor-manufacturer of "The Hookor".

The cone-shaped hood is made of neoprene fabric (black on the inside and white outside) attached to an 18 in. dia. metal ring. One size fits all mature hogs. Unlike a bushel basket or large pail, The Hookor fits up snug against the shoulders to shut off virtually all light, causing even the most stubborn sow or boar to obediently back out of a crate or up a loading chute, explains Lynch. "Because it's made of fabric, it's easy to slip between iron bars and braces for use inside any stall or crate. If two boars are fighting, two persons can go in with 'Hookors' and separate them easier and safer than with gates or other devices," he points out.

Lynch had stubborn sows in mind when he originally came up with the idea for the device, on which he has a patent pending. "It worked so slick we now use it on every sow we move out of crates or stalls. They don't get riled up and there's virtually no resistance in moving them out. Since they're not riled up, they're much quieter and more compatible when grouped together coming out of farrowing crates," says Lynch, who also manufactures the Sydell limited feeder for sows, and the Sydell Crate Crib.

Contact: FARM SHOW Followup, Sydell, Inc., Box 85, Burbank, S. Dak. 57010 (605 624-4538).



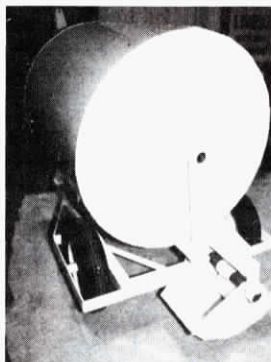
## Portable Watering Tank

Here's portable watering at its best — cleans in seconds and has no floats or valves to go wrong. What's more, you can also use it as a medicator, if desired.

To clean, all you do is pull a pin and swing the trough to either side.

The tank operates on vacuum. Its only opening is a 2½ in. dia elbow (see photo). To fill, you rotate the tank to bring the elbow to the 12 o'clock position. When full, you roll the tank to put the elbow at 6 o'clock, with its output end inside the waterer and about 3 in. from the bottom. Water automatically vacuum feeds into the waterer as hogs drink — without any float or valve, and without any leaks or spills.

Available with a 140 gal. tank (with wheels) or a 100 gal. tank (on skids). Both models avail-



able with an optional medicating attachment, and an electric heater for the waterer. Sells for \$450 (140 gal. model) and \$395 (100 gal. model).

Contact: FARM SHOW Followup, Wulf Development Co., Box 267, Cheney, Kan. 67025 (ph 316 542-3558).

## Pig Sauna

"You'll save 70% of the cost of heat lamps, plus you can lower the farrowing house temperature to 60 or 65°," says Gary Kruse, manufacturer of the new plastic Pig Sauna.

A 75 watt bulb keeps inside



temperature of the sauna at 85 to 90°. The unit's clear plastic lid lets you walk by to see how the pigs are doing without disturbing them. It can be placed in the front or rear of straight bar or "fingered" farrowing crates.

Sells for \$75.

Contact: FARM SHOW Followup, Agri-Technology, 101 4th St., Mineola, Iowa 51554 (ph 712 526-2111).