

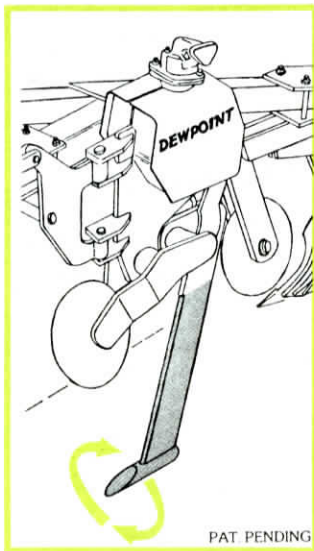
## HELPS BEAT THE DRY YEARS

# New Orbital Subsoiler "Fractures" Soil

Latest new tillage tool is the Dewpoint, an orbital subsoiler designed to "help you beat the dry years."

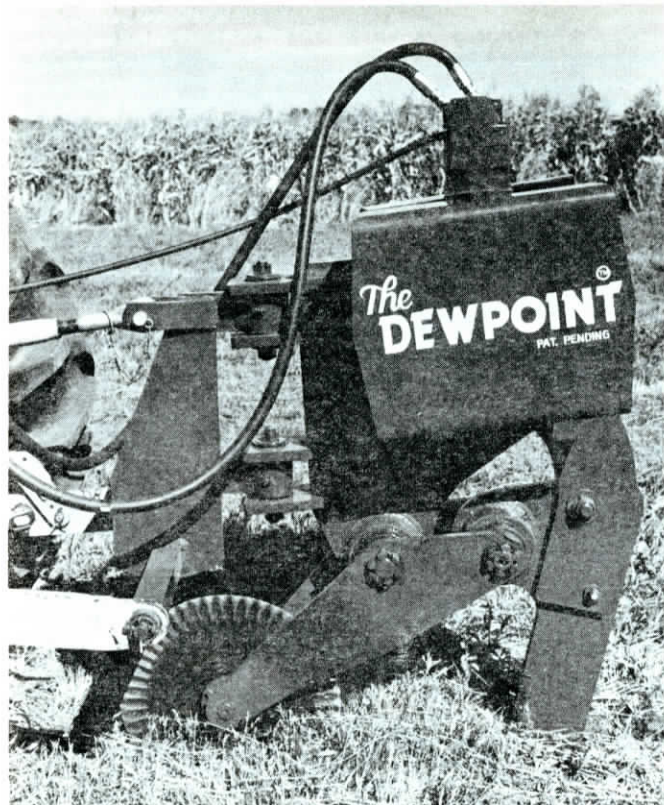
The bullet-shaped point of the subsoiler is hydraulically-driven to orbit at 1400 rpm's. This orbiting action of the point, operated at a depth of 24 in., "fractures" soil in a 6 to 10 ft. radius to relieve compaction and allow moisture to seep deeply into the ground, explains Ron Strom, Sales Manager for Vibra King, manufacturer of the new tillage tool.

It can be mounted on a 3 pt. hitch and used individually, or several units can be ganged on a toolbar. Or, individual units can be mounted on moldboard or chisel plows to combine two operations into one. "Orbiting action of the subsoiler point facilitates plowing," says Strom. "The plow pulls easier and follows better because of the soil-fracturing action of the subsoiler. Its 24-in. working depth gets it below the normal soil compaction level. About 16 hp are required to operate the hydraulically-powered subsoiler but this is more than offset, says Strom, by the machine's soil-fracturing action which makes for easier chisel or moldboard plowing. He adds that the bullet-shaped point leaves a path or channel which helps promote better underground drainage.



Subsoiler's bullet-shaped point is angled 30° and orbits at 1400 rpm's to "fracture" compacted soil in path 8 to 10 ft. wide at a depth of 24 in.

For more details, contact: FARMSHOW Followup, Vibra King, Inc., Kingswood Road, Box 247, Mankato, Minn. (ph. 507-387-6574).



About 16 hp are required to drive hydraulically-driven orbiting point of the Dewpoint subsoiler, which operates 12 in. underground. Unit can be mounted on a 3 pt. hitch, or several units can be ganged on a toolbar.



Individual Dewpoint subsoilers can be mounted on chisel or moldboard plows to combine two operations into one.

## "BEATS JUMPER CABLES"

# Warm Start for Cold Engines

"Beats jumper cables," says Hayden Elder, inventor and manufacturer of Motor-Mate, a new concept for starting stubborn tractor, truck or car engines in cold weather.

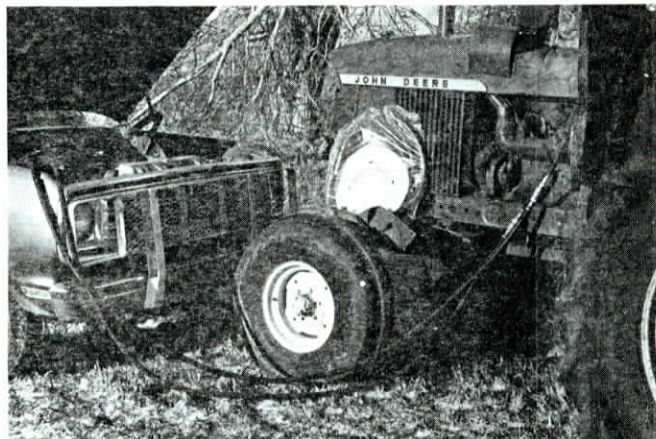
Water from a warmed up pickup, car or truck is circulated through the cold engine. The Motor-Mate kit includes hoses and quick-couplers to connect the two engine blocks together so water from the warm engine can circulate through the cold engine.

"It takes about ten minutes to warm a cold engine," explains Elder. "Warm antifreeze is transferred to the cold engine which then forces cold antifreeze back to the service vehicle to be warmed and recirculated, It

avoids damage to starters, batteries and engines by warming the inside of the motor."

The kit includes two 12 ft. extension hoses, two short engine extension hoses which are permanently attached for quick-hookup of the Motor Mate, plus all the clamps, tees and adapters needed to interconnect two water-cooled systems. Any standard equipped, water-cooled car, pickup or truck can be used as the service vehicle. Complete kit sells for about \$70.00.

For more details, contact: FARM SHOW Followup, the Hay-Mar Corp., Hayden Elder, Pres., Rt. 1, Troy, Kan. 66087 (ph. 913 988-4499).



Hot water from service vehicle is circulated through the block of this cold tractor via the Motor-mate System. Takes 10 to 15 minutes to warm cold engine, says the manufacturer.