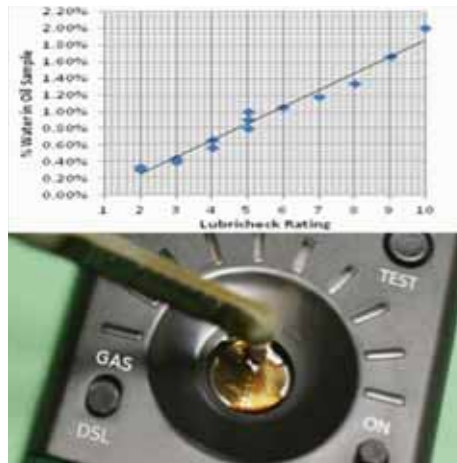


Digital Oil Tester Saves Idaho Farmer \$\$\$

The Lubricheck Oil Tester has come a long way since Farm Show introduced the novel pocket-sized device to its readers back in July of 2012. Since the first units shipped 2 years ago, the Lubricheck is now 10 times faster, with several mechanical improvements for excellent reliability. Thousands of customers have found this digital gadget has paid for itself, as it helped them eliminate unnecessary oil changes. Many have also caught serious engine problems early.

One such customer is Matthew Peterson, who farms near Rexburg, Idaho. Matt recently took over the family farm when his father retired. Suddenly, he had many pieces of equipment without clear maintenance records. Some had been idle for years. He wrote, "After seeing the story on the Lubricheck tester in FARM SHOW (Vol. 36, No. 4), I ordered one. The day it arrived, I checked the oil on 23 engines. I had only 3 that showed a need to change oil at the time, and 2 or 3 that were close to needing oil changed. I saved a lot of money on oil immediately." Matt went on to write, "I saved even more money on a Case 4494. The Lubricheck tester indicated problems only 100 hours after an oil change. It gave me high readings and blinking lights indicating metal in the oil. When I drained the oil and checked the oil pan, I found filings. I tore it apart this winter and found broken rings and worn bearings."

Chad Erickson, CEO at WaveOn Tech, said "It has become quite common to



Digital "tester" has 10 LEDs to rate your oil. It detects contamination in the oil, and will react to dirt, metal, carbon, acid, and as little as 20 drops of water or antifreeze per qt. of oil.

hear of Lubricheck users catching engine problems early. A high Lubricheck reading on low to medium used oil can be a dead give-away of engine problems. It is particularly gratifying when customers tell us how Lubricheck detected a coolant leak, which they easily fixed with stop leak." Regarding water in the engine, Mr. Erickson advises, "Frigid winter temps can prevent engines from getting up to full operating temperature, which can cause water or fuel to build up in the oil. Regularly testing your oil with Lubricheck can catch these problems before engine damage results."

The Lubricheck has been designed for ease of use. With a few drops from the dipstick placed on the sensor, this one-of-

a-kind oil tester instantly rates oil condition on a scale of 1 to 10. Green LEDs 1 - 7 mean excellent to good. Amber LEDs 8 and 9 mean fair condition. Red LED 10 means change oil or check engine. Lubricheck can help identify engines where a professional lab analysis is advised.

Lubricheck sells for under \$50, and is available on Amazon.com, lubricheck.com, or by phone. Lubricheck is designed and assembled in the USA by WaveOn Technologies, a small, high tech company in rural Minnesota.

Contact: FARM SHOW Followup, WaveOn Tech, 17319 Lake Blvd, Shafer, Minn. 55074 (ph 855 569-2783; www.lubricheck.com).

Reader Inquiry No. 31

The Original Gas-Powered Post Driver Is Even Better...

REDI Driver is the World's original gas powered post driver, developed by Christie Engineering of Australia. The driver has now been on the market and in the hands of operators for over 4 years! The REDI Driver has proven to be so reliable over those 4 years, that we are now happy to extend our warranty to 3 years! The HONDA engine carries a 2-year normal use warranty.

REDI Driver is 100 percent self-contained and eliminates the need for power sources such as air compressor or hydraulics; so there are no more annoying hoses to deal with. One person can easily install fence posts all day long! The handles have a very effective dampening system to keep the operator comfortable. The power pack of the REDI Driver is the reliable HONDA GX35 engine, which is 4 stroke and inclinable to operate at any angle. Drive up to 1,000 posts on one gallon of gas.

REDI Driver now offers 2 models to fit all your fencing needs. 1) The REDI Driver

Classic which has a 2" barrel for t-posts and other smaller posts, weighs only 32 pounds, and offers a powerful 1,720 bpm. 2) The all new REDI Driver Boss which has a 3 1/8" barrel & full size hammer for larger posts, weighs only 35 pounds, and offers a powerful 1,820 bpm. The Boss also includes a reducer sleeve so you can still drive t-posts as well! The Boss is the largest & strongest gas powered post driver on the market!

"We are a family owned and operated business who is passionate about our products and our service", says Lorri Evans from REDI Driver. "You will always deal directly with someone who cares about each and every customer". We stand 100% behind our products, and your satisfaction; so much so, that we offer a money back guarantee!"

Our newest addition to our product line is our exclusive handle extension kit. The kit can be added to any of our REDI Driv-



er models. The handle kit adds over 2' of length to the handles, thus eliminating the need for ladders or stools, which increases safety and efficiency! REDI Driver is the only gas powered post driver to offer the option of extended handles.

Contact REDI Driver Inc. at (702) 293-3222, or email info@redidriver.com, or mail: 1557 Foothill Drive #A103, Boulder City, Nevada 89005. Check out our website for jobsite video & customer testimonial: www.redidriver.com

Reader Inquiry No. 32