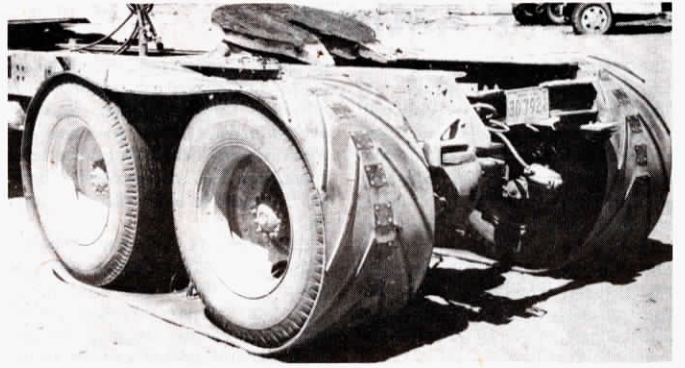


Franklin Heese and Marv Norlund equip their tracks with long tapered knobs on the inside which wedge between duals to hold tracks in place.



Although best suited for off-highway use, rubber tracks can be used at speeds up to 25 mph on hard-surface roads.

“WHEN THE GOING’S TOUGH, TRACKS KEEP YOU GOING”

New Flotation Tracks For Mud, Snow Or Sand

Custom-fitted rubber tracks designed for use on straight and semi trucks are new from Truck Tractors, Concordia, Kan.

“They aren’t cheap, but they really do the job,” says Danny Empson, president. “They’re ideal for mud, snow, or sand. After original fitting to a specific vehicle, they can be taken off or put on in 5 or 10 minutes,” says Empson.

The tracks are best suited to tandem-axle trucks with dual wheels, but also are available for single-axle trucks with duals, such as often used by farmers.

For tandem-axle trucks, each track weighs about 160 lbs. Made of ½ in. thick reinforced rubber belting with cleats to improve traction, the tracks

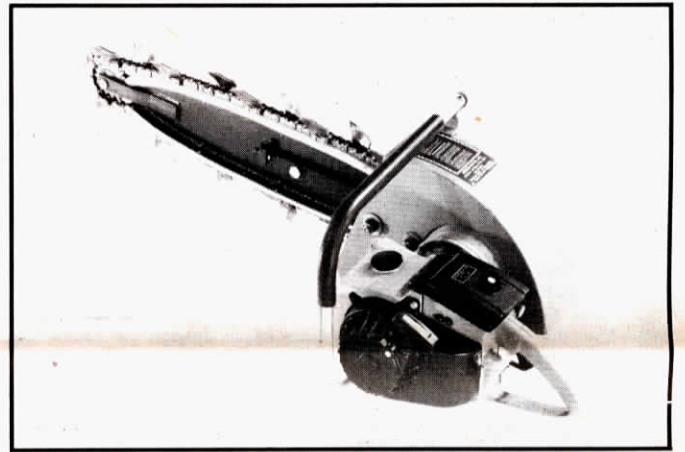
have 4 in. long tapered knobs on the inside which extend down between the dual wheels and prevent the track from flying off.

Best suited for off-highway use, they can be used on hard-surfaced roads at speeds up to 25 mph.

Empson fits and installs the tracks himself. The price of \$3,250 for a tandem-axle set (\$1,650 for single-axle tracks) includes installation labor and travel up to 400 miles, beyond which a mileage charge is added.

The tracks also are available for skid-steer loaders.

For more details, contact: FARM SHOW Followup, Danny Empson, 707 East 4th, Concordia, Kan. 66901 (ph 913 243-7082).



Hand-held ditcher has 26 digging teeth and weighs 43 lbs.

New Chain Oiler Is Self-Tending

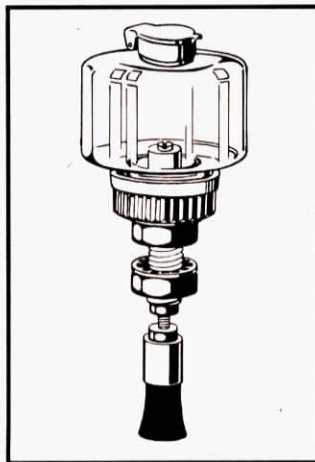
A dollar’s worth of oil can cost \$2 to \$12 to apply to chains using the old-fashioned oil-can method. Besides, hidden or inaccessible chains may be overlooked.

The modern answer to lubrication is the new automatic chain oiler by Oil-Rite Corporation. Located at strategic points on bearings and wearing surfaces, the oiler does the job efficiently and cheaply.

Oil-Rite offers oilers for chains and other moving parts in a variety of styles and sizes. Chain oilers consist of a reservoir, dispenser, and brush. Reservoirs have capacities of one ounce to one quart and are made of plastic or steel.

Brushes are of nylon or steel bristles and are round, rectangular or rotary shape. Oil can be dispensed by gravity, vacuum, or air pressure.

Oil-Rite claims that half of chain problems come from faulty lubrication. The company will recommend the proper style and size for various kinds of equipment such as combines, corn pickers and manure spreaders. A complete line of accessories is available.



Chain oiler automatically lubricates hard-to-reach chains, bearings.

Write to the company and describe your needs. Contact: FARM SHOW Followup, Oil-Rite Corporation, 2318 Waldo Blvd., Manitowoc, Wis. 54220 (ph 414 682-6173).

“BEST NEW DITCH DIGGER SINCE PICK AND SHOVEL”

Power Trencher Works Like A Chain Saw

Latest new offspring of the chain saw is the chain ditcher that the manufacturer, Ditcher Saw Company, claims is “the best ditch digging device since the pick and shovel”.

Called the “Ditcher”, it’s portable, lightweight (43 lbs.) and highly maneuverable in tight places. It digs a 2½-in. wide trench for burying waterlines, gas lines, electric cables, telephone cables, etc. Another popular use is to dig out shrubbery and small trees for transplanting.

The ditcher chain has 26 digging teeth of hardened steel that bite through gravelly and stony soil. It’s powered by a standard Homelite gasoline engine.

Price tag on the “Ditcher” is \$995. For more details, contact: FARM SHOW Followup, Ditcher Saw Co. Inc., P.O. Box C, St. Marys, West Virg. 26170, (ph 304 684-3800).



Trencher digs 2½ in. wide trench for burying pipe or cable.