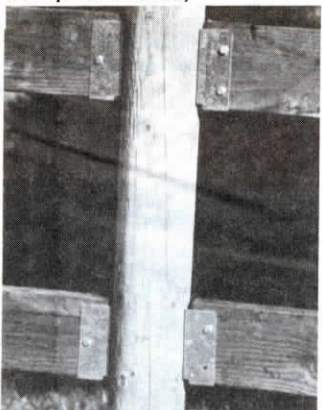


I am a retired machinist and general foreman of the National Park Service's metal crafts shop in Washington, D.C., and I build and sell these octagonal wrought iron gazebos. They're made by cold-forming the scrolls using a bender and jigs and then welding them together into assemblies. The assemblies are then bolted together. I helped design and then built the iron gazebo used for Tricia Nixon's White House wedding in 1971 and other examples of my metal work can be seen around the White House. The overall height of the gazebo is 12 ft., 6 in. and it's 10 ft. wide at the roof. The side columns are 7 ft., 1/2 in. tall. There are a total of 672 scrolls in the gazebo. All scrolls are 3/16-in. thick with rounded ends. (William W. Cranford, Rt. 2, Box 35, Indian Head, Maryland 20640 ph 301 743-7718)

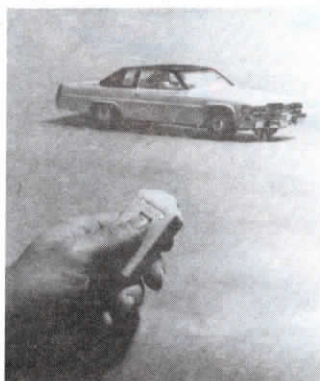


Our revolutionary new galvanized steel "Post-Mate" fence rail connectors are formed to fit 4, 5 or 6-in. dia. round fence posts. The formed bottom lip holds the rail up, allowing for easy one-man installation. The bracket screws into the post and then you slip the rails in place. (Helen Napoleon, FenceKote, 11261-A Trade Center Dr., Rancho Cordova, Calif. 95742 ph 916 635-5612)



I made a chicken manure spreader out of a Grove 16-ft. ensilage box mounted on a truck. The box is turned backward and the feed apron on back of the rig is removed. In place of the apron, I mounted a metal plate 1/4 in. by 22 in. by 7 ft. on which I installed four hydraulic motors, each fitted with four 21-in. paddles that spread manure out be-

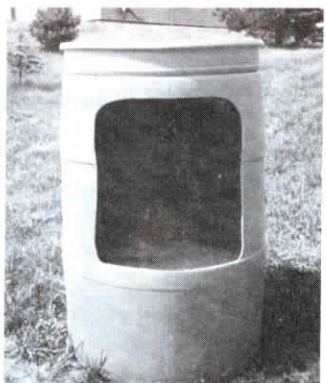
hind the truck. The motors are run with a tandem pump connected to the truck power take off. The bottom beater on the box is the only one still used. The truck holds around 5 tons. Note in the foreground my "road ready" field roller fitted with truck treads that was featured in FARM SHOW's Vol. 14, No. 6 issue. (Ruben L. Atwood, Rt. 1, Box 361, Rileyville, Va. 22650)



I am the inventor of a Remote Car Starter that lets you start any car or pickup from a distance of up to 600 ft. with a miniature key chain transmitter control device. It's easy to install and you don't have to leave keys in the ignition to use it. It pumps gas pedal to set choke for cold starts and will pump gas twice within its 13 min. running time. It shuts the engine off automatically after 13 min. Besides starting in winter, you can also use it in summer to have the car or truck cooled off when you get in. Sells for \$299 (for distances up to 300 ft.) and \$399 (up to 600 ft.) Diesel unit also available. (Victor Lesnard, Vitronic Remote Car Starter Corp., P.O. Box 2485, Dearborn, Mich. 48124 ph 313 563-2900 U.S.; in Canada 519 948-1991)

We designed and built this mineral feeder for our 100-animal beef herd. We find it to be a thoroughly satisfactory solution to the problems we had previously experienced with mineral feeders.

We cut a 15 by 17-in. hole in the side of a



clean 55-gal. polyethylene barrel using a sabre saw. Then we fill the bottom 12 to 14 in. of the barrel with a high-strength mortar mix so that the upper surface of the concrete is 2 to 3 in. below the lower lip of the side opening. It makes a weather-shielded container with a very low center of gravity (weighs almost 200 lbs.) which stands up to bumping and jostling by livestock. The mineral supply always remains dry. The barrel is easily rolled onto the levelled lip of a loader bucket for transport or can be lifted by 2 men into a pickup bed if necessary. We position the feeder so that the opening faces the direction that's least likely to let in driving rain. With used polyethylene barrels selling for \$5 to \$10 and the cost of concrete at about \$5 we find our units to be the most indestructible and inexpensive available. (Ronald R. Hutchinson, 650 S. Lincoln St., Augusta, Mich. 49012 ph 616 731-4960)



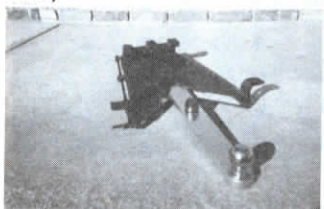
Your readers may be interested in this new "Hydra-Quad" tractor that I built. This 4-WD, 4-wheel-steer tractor is powered by a 24 hp rear-mounted gas engine and steered with a pedal foot control. Its design permits an incredibly tight inside turning circle of only 68 in. and it's equipped with 12 by 12 by 26 flotation tires which help make it an all terrain utility tractor. It has a solid front axle and an oscillating rear axle with 4 in. deflection. The

tractor is much easier to get in and out of than a skid steer loader. The long wheel-base and low, wide profile allow it to climb hills with comparative safety. Available attachments include a 60-in. bucket, pallet forks and a dirt or snow blade. Others are on the drawing board. I'm looking for a manufacturer. (Rudolph Wittke, 1659 Glenn Ave., Waterloo, Iowa 50702 ph 319 233-7464).



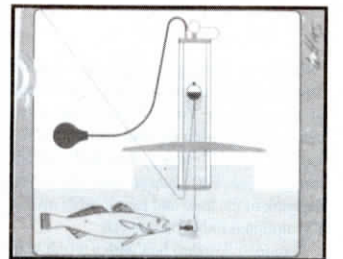
The compact benchtop design of my "Blast-n-Barrel" sandblasting cabinet offers several advantages. It's constructed of high-density polyethylene which makes it highly durable. It's convenient to use. Simply plug an air hose onto the external fitting, then slide your hands into the 18-in. long cloth-lined p.v.c. gloves, grasp the trigger-controlled siphon-fed gun, and blast away. Two viewing windows on top allow a full view of the part being cleaned.

We use glass beads instead of sand because they don't create as much dust and can be used 5 to 10 times more often before losing their abrasive cutting action. Sells for under \$200. (Patrick Burke, Freelance Fabrication, P.O. Box 4651, St. Paul, Minn. 55104)



Our Sure Return Hitch may be of interest to your readers. It mounts on a car or pickup and lets one person quickly, safely, and easily hitch up to towed equipment. The hitch includes a latch assembly, guide as-

sembly, and drawbar. The drawbar can be pulled backward 12 in. and swung 12 in. from side to side so you only have to get within a foot or so of whatever you want to tow. Once the hitch is locked up, I back up the pickup and the guide assembly locks the drawbar into position. Unlike other hitches of this type, it doesn't require removal of any part of the bumper. I'm looking for a manufacturer. (Al Schmid, Rt. 1, Box 202, Ellsworth, Wis. 54011 ph 715 273-3195)



Ice fishermen will like our new remote-operated "Jig-A-Bob" that lets you jig the bait up and down by simply squeezing a rubber bulb attached to the device by a 12-ft. hose. A 2-in. dia. transparent cylinder, open at the top, is pushed through a hole in the center of a 6-in. dia. polyethylene disc which is lowered over the bobber in the ice hole. You close a valve on top of the cylinder which creates a vacuum inside it. When you squeeze the rubber bulb it varies the pressure inside the cylinder and causes the bobber to jig up and down. If you're in your ice fishing house you can squeeze the bulb with your foot and play cards at the same time. It also works great for outdoor fishing because you can operate it right from any vehicle. The bobber is always visible. The base of the device helps retard freezing of the ice hole and the cylinder has a double wall for insulation. Retailers for \$19.99. (Don Torgrimson, Triple-T Products, Rt. 2, Box 140, Minot, N. Dak. 58701 ph 701 852-6977)