

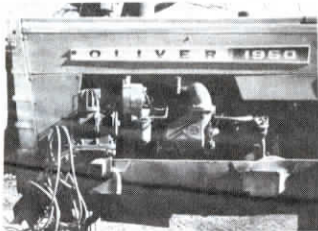
Reader Letters



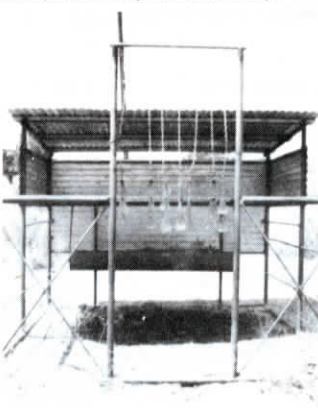
I want to thank you and your great magazine for the article that you published (Vol. 14, No. 4) about our Wedge-Locbracing system that lets you use ordinary steel "T" posts to make corner post assemblies. The response has been tremendous. Your magazine has put us in touch with buyers all over North America. We've also had a lot of interest from distributors and retail outlets. As you know it's very difficult to promote and gain acceptance for a new product. FARM SHOW magazine has done this for us and I wanted to let you know that it's much appreciated. (Ken Wagner, Wedge-Loc Co. Inc., 3245 Pendleton Dr., Rio Rico, Ariz. 85621 ph 602 281-7218)

I never get over the inventiveness of FARM SHOW readers and would like to make a suggestion for future issues. How about an "Inventions Wanted" section that would let farmers give suggestions on equipment they'd like to see invented? It would provide ideas to readers who've got the mechanical ability to come up with solutions. There are a couple of ideas I'd like to see developed. For example, I need a stoker for an outside wood furnace that would automatically feed split wood into the firebox. Another invention we need is a sure-fire way to keep coons out of sweet corn. The guy who figures that out will be a millionaire. (Gary Irwin, 12150 Sunset, Circle Pines, Minn. 55014)

Here's an idea that's handy for me. I mount a portable air compressor on the side of my Oliver tractor. It's driven off an extra water



pump pulley. When you don't need the compressor, you can easily remove the drive belt or, by removing one pin, you can dismount the compressor. As shown in the picture, I also added an extra fuel tank to the front of this tractor to extend operating time. (Henry Carl Steinacher, Rt. 1, Box 173, Kane, Ill. 62054 ph 217 942-3830)



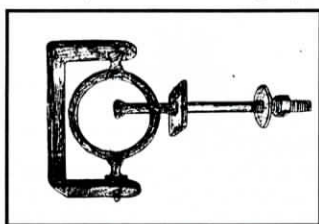
I'm 70 years old and kind of lazy. Putting ear tags on approximately 50 head of cattle is no easy chore so I decided to look for an easier way. I built a salt feeder with an entry gate, hanging about 25 ear tags from lengths of double link chain. Cattle passing through gate get wiped from end to end. Tags are easy to change when needed. (Fred Daniel, Box 246, Albany, Texas 76430)

I think many FARM SHOW readers would be interested in our new ceramic insulating roofing system for metal buildings. Fluid-applied ceramics provides more insulation than 4 in. of foam insulation. It waterproofs, is hail resistant, fire retardant, deadens sound and neutralizes rust (actually turns iron oxide to iron sulfate). Ceramics is fast becoming the leading reroofing system for metal buildings because it provides under-roof temperatures up to 25° cooler and eliminates roof movement, which is the major cause of leaks. It can be applied by brush, roller or airless sprayer and is very cost-competitive with other reroofing methods. (Glen W. Wood, Air-Cooled Performance, Rt. 1, Box 300, Ashford, Ala. 36312 ph 205 899-4376)



Our self-dumping trailer is balanced so the more weight put into the box, the more off-balance it becomes, making it dump better and faster. After dumping it's easy to turn back up by hand. The cart is great for sticky material because it tips completely upside down and it's simple and maintenance-free with just a couple moving parts. We make 2 and 4 yard sizes. Prices range from \$1,600 to \$3,400. (Mark G. Jones, J-10 Inc., P.O. Box 1036, Paris, Texas 75460 ph 214 784-0791)

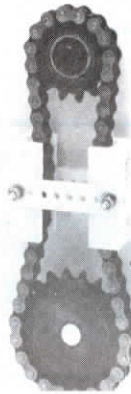
This "made it myself" swivel gate latch works perfect for all types of gates and swinging doors. Can be installed in place of any existing latch. It consists of a 4-in. dia. circular loop that's mounted on the gate post



and a long threaded rod that's mounted on the gate. As the gate is closed, it contacts the loop and swivels it to a perpendicular locking position, catching the rod inside the loop. You can open the gate in either direction and once locked, it won't open until you turn the loop with your hand. (Jim French, Emblem Rt., Box 28, Greybull, Wyo. 82426 ph 307 762-3541)

My name is Darvin Forward and I'm in prison. A friend of mine sent me a subscription to your paper as a Christmas gift last year. I am trying to improve myself and your paper has helped me get through this experience. I read it from cover to cover and really enjoy it a lot. Thank you for the good job you're doing. (Darvin Forward, #885443, Indiana State Prison, P.O. Box 41, Michigan City, Ind. 46360)

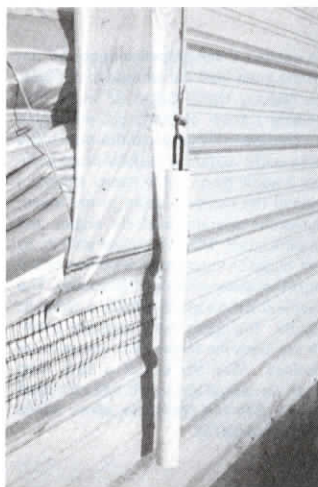
Our new "Flotensor" is a great labor and money saver because it eliminates the need to replace stretched drive chains. It consists of two saddle blocks made of extremely wear-resistant UHMW polymer connected by two



adjustable straps. Eliminates the need for half links since it takes up slack in chain. Can be used on most sprocket arrangements where the ratio between sprockets is less than 4:1. Ranges in width from 1 7/8 in. to 3 3/8 in. (James Grear, Nolu Plastics Inc., P.O. Box 2120, Aston, Penn. 19014 ph 215 358-1770)

My home-built Ford pickup, built from the best parts of pickups from the years 1969, 1971, 1973, and 1977 and featured on the cover of FARM SHOW (Vol. 12, No. 3, 1988), was destroyed in a crash last August. A drunk drove right out in front of me on the highway. I had driven the truck for 4 years and 3 months. I intend to straighten the frame and rebuild it all over again. Ford and I build tough trucks. (Terry A. Riegler, Rt. 1, Sparta, Mo. 65753)

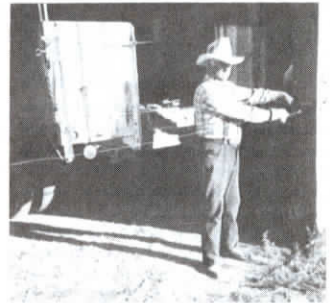
My brothers and I have been receiving your good magazine since you started and have enjoyed every issue and saved them all. The only ones missing are those that a friend or neighbor "borrowed" from us and did not return. I am 72 years old now and alone since my brother, Paul, died in 1984. My other brother Phillip died in 1961. The three of us started farming on our own in 1943 and enjoyed a wonderful partnership. (Victor Jaszewski, Rt. 2, Box 53, Independence, Wis. 54747)



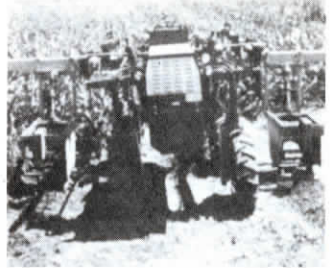
We use these homemade weights to hold down the curtain closing cables on our turkey barns. We made 16 of them in all. They're made of 24-in. lengths of 1 1/2-in. dia. pvc filled with concrete and with a bent piece of 1/4-in. rod inserted in one end as a hook. The weights are attractive yet they don't scratch up the sides of the building. (Melvin Miller, Rt. 1, Ewing, Ill. 62836)

I just received the September-October issue of FARM SHOW. One article, "Buyer's Report on Farm Equipment Replacement Parts", really caught my attention since I am the manager of Roberts Farm Equipment Tractors Parts, Inc. We have been a tractor

salvage yard since 1939 with over 3,000 tractors salvaged. I was disappointed that we weren't listed with the other salvage yards and replacement parts sellers at the end of the article. I have enclosed a copy of our 127-page catalog listing some of the wide range of replacement parts we offer. We think our service and parts make us one of the best salvage yards in the country. (Roland Roberts, Jr., Roberts Farm Equipment, Rt. 2, Camden, Ohio 45311 ph 513 796-2154)



I made a cable winch to open and close big sliding doors using a hub and bearings off the wheel of a mini bike. It's mounted on one side of the opening to the barn, which has two sliding doors that meet in the middle. A frictionless idler off a belt tightener on the opposite door frame acts as a pulley. To close the door opposite the winch, I hook onto the door handle with a hook on the end of the 1/8-in. dia. cable. To close the door on the side of the winch, I thread the hook through the idler pulley and hook it back on the door handle. To open the doors, I reverse the procedure. (Harry G. King, Lucerne Tr., Box 85, Thermopolis, Wyo. 82443 (ph 307 864-3066)



FARM SHOW readers might be interested in this one-of-a-kind chopper we build for chopping out male rows in seed corn. It eliminates "volunteer" male ears, creating better growing conditions for the female rows. We originally built it on a custom basis for a big seed company. It worked so well we started selling it to seed corn growers all over the country. The increased air flow and sunlight boosts yields and reduces the total amount of nutrients needed per acre. It also prevents ears from growing, eliminating problems with volunteer corn the next year. Depending on how male rows are positioned, the single-row ground-driven choppers mount either on the back of a tractor (when two rows are together) or on a high-boy tractor (when there's four female rows between each pair of male rows). The chopper is used right after pollination. (Jim Lindquist, Lindquist Welding & Supply, Box 37, Giltner, Neb. 68841)

When I'm working underneath my car, pickup, combine or other machinery, I put a 4 by 8-ft. sheet of paneling on the floor with the slick side up. It lets you slide in and out easily and if you drop a nut or bolt it's easy to find. (Marshall Forren, Rt. 1, Box 184A, Marshall, Ill. 62441)

(Continued on next page)