

# You Asked For It

What's the name of the manufacturer of chrome grilles for the front of IH 66 and 86 series tractors? Factory grilles are made out of a white aluminum alloy that doesn't stand up at all. (Clarence Bjorklund, Richville, Minn.)

Air Flo chrome grilles attach with two 3/8-in. bolts and are designed to draw in more air to cool radiator. Contact: FARM SHOW Followup, Thomure Mfg., Rt. 1, East Prairie, Mo. 63845 (ph 314 649-3628).

I'm looking for parts for my Pico chisel plow that was built by the Chattanooga Tool Co. about 15 years ago. The company has since gone out of business. I'd like to find another plow for parts or find out if another company took over the Pico line. (Dennis Walton, Rt. 1, Box 63, Loogootee, Ind. 47553)

Could you please recommend a source for engine shut-off gauges for our Deere 2130 tractor which we use to power a grain dryer. Because the tractor runs round the clock at harvest time, we'd like to fit it with a gauge that would shut down the fuel pump if oil or water gauges indicated a problem. (Fred Dunlop, Box 761, Stayner, Ontario Canada)

Murphy Safety Switch in California makes shut-off controls for tractors, combines, stationary engines and other farm equipment. Contact: FARM SHOW Followup, Murphy Safety Switch, P.O. Box 788, Palmdale, Calif. 93350 (ph 805 272-4700).

Could I please get a copy of the recent issue of FARM SHOW which explains and describes the recently developed new hay baler which picks up hay by air and has less moving parts? (Edgar B. Coleman, Muncie, Ind.)

The new "air-powered" big baler, which requires 40% less power to produce 8 by 4 by 3-ft. bales, was featured in Vol. 11, No. 6. Copies of the issue are available for \$2.00.

Some time back FARM SHOW featured an article on a kit to convert a motorcycle to a 3-wheeler. The same company also offers a kit to convert 3-wheelers to 4-wheelers. How can we get more details? (Norman Foellmi, Rt. 2, Box 71, Sparta, Wis.)

Contact: FARM SHOW Followup, Dirt-E-Works, Inc., 5301 E. Empire Ave., Flagstaff, Ariz. 86001 (ph 602 526-8257).

What's the address of the company that makes plastic snow fence? (Joseph Gonty, Rt. 2, Eleva, Wis. 54738)

A 100-ft. roll of 4-ft. high plastic fence weighs just 39 lbs. and is just 10 in. in dia. The company says it's got stiff vertical ribs that stop it from sagging like other plastic fence in the past. Contact: FARM SHOW Followup, The Tensar Corp., 1210 Citizens Parkway, Morrow, Ga. 30260 (ph toll-free 800 845-4453).

How can I get in touch with the U.S. Patent Office? I've got a new invention and would like to get more information on obtaining a patent. (Charles James Baus, Box 275, Dublin, S. Dak. 57270)

Contact: U.S. Patent & Trademark Office, Washington, D.C. 20231 (Ph. 703 557-3158).

We're over-run by moles and would like to find a good way to control them. We've tried poisoned peanuts and other commercial products. We've fed them thousands of sticks of chewing gum, and planted mole beans. The animals either just ignored the products or tunneled under them. We also tried mole bean syrup, and

last spring we tried traps. Our yard is so dug up it looks like it's been plowed. Next year we won't have much of a lawn. Our neighbors have similar problems. We're hoping FARM SHOW readers might have a solution for us. (Lonnice Hull, 1619 St. Ellen St., O'Fallon, Ill. 62269).

If you've found a surefire method for getting rid of moles, let us know about it. Contact: Moles, FARM SHOW, P.O. Box 1029, Lakeville, Minn. 55044.

We'd like more information on the old tire "fuelmaker" featured in FARM SHOW last year that cuts up old tires, making "logs" out of the cut-up pieces for burning in wood stoves. (Art Skogstad, Rt. 2, Box 63, Blaisdell, N. Dak. 58771)

The tire "fuelmaker" is being manufactured by a Minnesota company. The machine uses a blunt-edged blade to cut through car, truck and tractor tires. You can stack the cut-up pieces, allowing storage of old tires in 1/4 of the space normally required. Makes it easier to feed tires into stoves - they burn more evenly at more easily controlled temperatures



by eliminating the air inside the tires - and also make it possible to bury tires in landfills. The portable tire cutter is powered by either a 10-hp. gas motor or a 5 hp. electric motor. Uses a single 5-in. hydraulic cylinder at 2,500 psi. Sells for \$7,995. "You can pay for the machine by hiring it out to tire shops, service stations, landfills, auto salvage yards, and anywhere else tire disposal is a problem," says Wes Sprunk, manufacturer. Contact: FARM SHOW Followup, Saf-Tee Siping & Grooving, Inc., 14180 W. 78th, suite 102, Minneapolis, Minn. 55344 (ph toll-free 800 223-4540).

I would like to know if any FARM SHOW readers have ever changed the hydraulic controls on a Deere 4240 or 4440 tractor from the right side to the left. If anyone can help I would appreciate it since I can only use my left hand. (Otto Klusman, Rt. 1, Box 128, Greeley, Kan. 66033)

Some time back FARM SHOW carried an article about a company importing Deutz look-alike tractors. The company also carried half-price replacement parts for Deutz tractors. How can I get in touch with the company? (Wesley Sittler, Linwood, Ontario)

Memo Tractors (Vol. 11, No. 2) are made at a factory in Yugoslavia that used to make tractors and parts for Deutz. They're being imported to the U.S. Contact: FARM SHOW Followup, Memo Tractors, 1950 E. Continental Blvd., South Lake, Tex. 76092 (ph 817 481-6577).

I'm looking for a remanufactured camshaft replacement for gas or diesel engines that increases mileage and power. (Marvin Pleinis, McLaughlin, S. Dak.)

We featured a story 2 years ago (Vol. 10, No. 3) about Stoney Pipes, a custom engine re-builder who installs retooled camshafts and high compression pistons to boost mileage and also increases power in farm tractors,

trucks and cars. The cam is reground so that it leaves the intake valve open halfway through the compression stroke and begins opening the exhaust valve before bottom dead center on the power stroke. This lets the fuel mixture expand twice as much and decreases the amount of compression at low rpm's and increases it at high speeds. Contact: FARM SHOW Followup, Stoney D. Pipes, Rt. 1, Box 49A, Rocheport, Mo. 65201 (ph 314 698-3995).

Several years ago I read a story in FARM SHOW about a farmer who built a special barrel stove for burning stumps in the ground, eliminating the need to dig them out. When did the story run? (Franklin Sharf, Rt. 1, Box 96, Brownsville, Wis. 53006)

Donald Tellers, Chaska, Minn., built the stump burner featured in Vol. 4, No. 5 in 1980. He used a rusted 300-gal. storage tank as the main chamber of the burner. He cut off one



end of the tank, installed a chimney stack on the other end and cut a stoker hole in the side. He sets the stove over the top of a stump and throws in a few wads of paper and some wood to get the stump burning. He says that once you get it burning it keep smoldering until it burns right down below ground to the roots. Key to success of the burner was leaving a gap at the bottom of the stove to provide a steady upward burning draft.

I would like more information about the fast-growing hybrid willow tree from Australia that grows 8 ft. the first year and reaches 40 ft. by its fifth year. (Walter Stewart, Rt. 1, Box 210, Menasha, Minn. 56464)

Neil Curry (Vol. 11, No. 5) is setting up distributors in the U.S. for his unusual new willow. Contact: FARM SHOW Followup, Neil Curry, Tree & Country, 187 Boundary Road, Narre Warren East, Victoria, 3804 Australia.

We're looking for more details about the mountain-bred sheep featured in FARM SHOW about a year ago. The breed has a brown fleece that is shorn twice a year. The sheep are also good for meat and milk. (John Nobel, 9440 Byron Center Ave., Byron Center, Mich. 49323)

Some experts say 4-horned Navajo sheep (Vol. 9, No. 4) may be the oldest American sheep breed. Navajo sheep have brown fleece that's highly prized by spinners. The animals are highly resistant to internal parasites, hoof rot and many other ailments. Contact: FARM SHOW Followup, Ingrid Painter, Puddleduck Farm, 1607 232nd Ave. N.E., Redmond, Wash. 98052 (ph 206 885-3508).

I'd like to heat my shop with waste motor oil. Can you give me the addresses of manufacturers of waste oil burners? (Paul Potter, Elk City, Okla.)

Kutrieb makes waste oil furnaces varying in size from 87,000 to 250,000 btu's. Contact:

FARM SHOW Followup, Kutrieb Corp., 430 Phillip St., Chetek, Wis. 54728 (ph toll-free 800 826-6710). You can build your own waste oil burner with a do-it-yourself kit from a Montana manufacturer. Contact: FARM SHOW Followup, Robert Benjamin, Box 1148, Fort Benton, Mont. 59442 (ph 406 734-5416).

I would like the address of Sunco Mfg., featured in the last issue of FARM SHOW. The story on their new guidance system for cultivators did not contain the company's address. (Wayne C. Olsen, Rt. 1, Box 191, Beaver Crossing, Neb. 68313)

Sunco's address was inadvertently left off our story. The company's new guidance system is featured again elsewhere in this issue. Contact: FARM SHOW Followup, Sunco Marketing, P.O. Box 2036, North Platte, Neb. 69101 (ph 308 532-2146).

I am looking for a lightweight belt conveyor to be used on gravity hopper wagons to handle soybean seed and wheat seed without the seed damage that can be caused by screw augers. (Gary Knuckles, Rt. 1, Box 94, Antwerp, Ohio 45813)

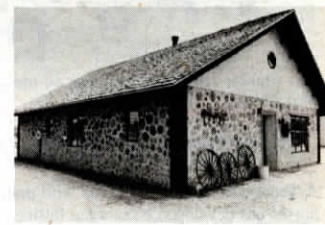
Maust Enterprises makes a belt conveyor for unloading grain from combines or grain carts (Vol. 8, No. 5). Contact: FARM SHOW Followup, Maust Enterprises Inc., 8639 Pigeon Rd., Bay Port, Mich. 48720 (ph 517 453-3837).

I'd like a copy of the issue of FARM SHOW that featured the round bale kicker for round balers that eliminated the need to back up to eject round bales from the baler. It had no moving parts and simply bolted to the back of the baler. (Ray Davis, Rt. 1, Box 254, Arthur City, Tex. 75411)

The bale kicker was featured in Vol. 11, No. 5 (copies still available for \$2.00). It was built by Kansas farmer Dick Derr who says the idea should work on any baler.

About two years ago I read in FARM SHOW about homes with walls made out of logs stacked up like cordwood. I'd like more information about this unique building idea. (Donald R. Moore, 885 Carmelita, Florissant, Mo. 63031)

The super-insulated "log end" home built by Don Larson, Carrington, N. Dak. (Vol. 8, No. 2) looks like a stone houses because only the



ends of the logs can be seen sticking through the mortar from outside the house. Walls can be built to any thickness, depending on the length of the cordwood. The logs used must be extremely dry to reduce shrinkage after construction. Soft pine is used because it has a higher insulating value than hardwoods. Only 2 to 3 in. of the logs - at either end - are mortared together. The gap in between is filled with foam insulation.

I am looking for the marketer or manufacturer of the on-farm butterfat tester for milk. (David O. Zimmerman, Rt. 2, Shiloh, Ohio 44878)

Last we heard the on-farm butterfat tester from Agrofarm (featured in Vol. 10, No. 2) is still at the prototype stage. The tester, which gives a butterfat reading from a 3-oz. sample of raw or homogenized milk, uses ultraviolet light and mirrors to measure fat content. When it becomes available, we'll publish the information.