

Modified Deere Furrow Openers

"I've always wondered why Deere designed the furrow openers on their Max-Emerge planters with an opening at the front. When we decided to go to ridge planting, we knew we'd have to close that gap," says Phil Troester, Hampton, Neb.

"We first mounted an 8-in. wide regular cultivator sweep in front of the double discs by welding it to a ½-in. thick piece of 3-in. wide flat iron welded to the cast iron center of the openers. We bent the edges of the sweep up so it would run level with the ground and not dig in.

"After a year of operation like this, we welded pieces of flat iron onto the discs themselves to clear dirt off the center of the ridge. The rear back edge of the flat iron should be lower than the back edge of the sweep to clear away dirt and cut off any weeds that may have gotten a start. The openers now span about 16 in., leaving 14 in. between rows for trash to get through.

"We tried fluted coulters mounted in front of the openers the first year but trash plugged up between the coulters and the sweep. When we

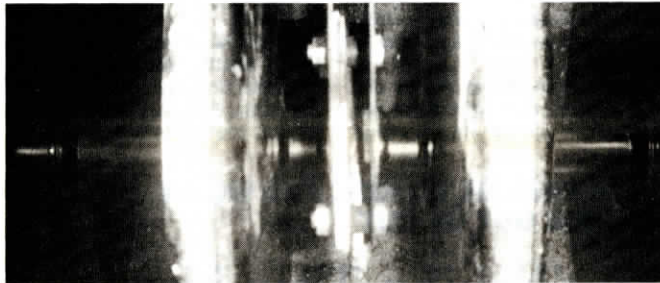


Troester put metal plates over discs and a sweep in front.

took them off, we found it worked just fine without them.

"This modification was basically all we had to do to plant on ridges, besides blocking our 3-pt. hitch solidly into place. We knew it was worth experimenting because these furrow openers are worthless as trade ins and we didn't want to spend \$150 to \$400 per row to convert to ridge planting equipment. We're very satisfied with the results."

Contact: FARM SHOW Followup, Phil Troester, Rt. 1, Hampton, Neb. 68843.



Spool-shaped spacers tightly hold press wheels in place.

New Spacer Kits For Press Wheel Drills

"We've never advertised. This product sells itself," says Marvin Lawrason, Czar, Alberta, inventor and manufacturer of a new spacer kit for seed drills that's already in use throughout western Canada and Midwestern plain states.

Lawrason says any farmer who owns a seed drill equipped with press wheels understands the problem. After a bit of use, the wheels begin to work loose because of inadequate spacers between wheels. "The more you tighten them up, the more the wheels wear. As a result, spacing is off, the wheels wear unevenly, the drill pulls harder, and you have to keep tightening them up," says Lawrason.

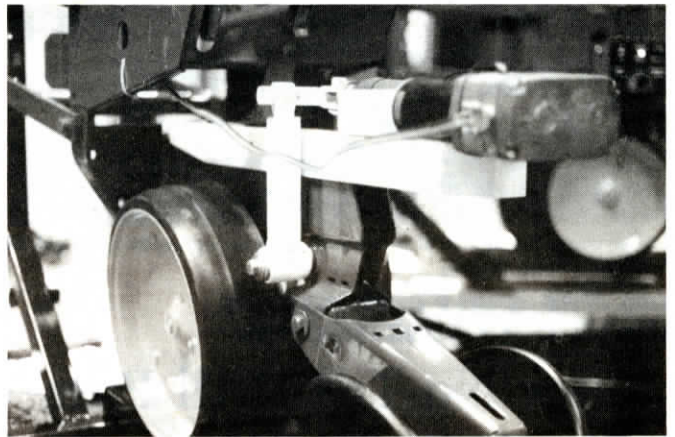
He makes kits to fit 46 different International drills, some of the 42 models of Deere drills, and many other drills on the market. The kit consists of heavy-duty machined circular spools with a flange at each end. There's a spacer on either side of each press wheel and against each bearing.

To install, you simply empty everything off the shaft and completely replace the square metal tube spacers supplied by most manufacturers with the spool-shaped spacers, which Lawrason has patented.

"Many dealers now say they won't sell a drill until they've installed our spacer kit and every farmer who's tried them installs them on their new drills," says Lawrason, who's been making the spacer kits for the past 10 years. "Every drill is different even within same models. We have to ask each farmer for measurements from his drill to figure out which kit is needed."

Kits sell for \$375 to \$400. They take about 2 hrs. to install. No modification is necessary. Lawrason is looking for dealers.

For more information, contact: FARM SHOW Followup, Shurtight Mfg., Ltd., P.O. Box 60, Czar, Alta. TOB OZO (ph 403 857-2145 or 857-2156).



Add-on depth control unit electrically adjusts depth from cab.

LETS YOU ADJUST TO CHANGES IN SOIL TYPES AND CONDITIONS

On-The-Go Depth Control For Planters

"It lets the operator adapt to changes in soil type and condition, changing planting depth on the go without leaving the tractor seat," says Philip Gremelspacher, farmer and manufacturer of a new depth control system for row crop planters.

Designed to fit Deere Max-Emerge and International Early Riser planters, system components fasten to each row unit without any cutting or welding. It uses electric screw actuators, controlled from the cab, to set and maintain depth at any level. A Max-Emerge planter, for example, has 17 individual depth settings. Normally, you'd have to climb down from the tractor to select the depth. With Gremelspacher's new system, you can set it at any one of those settings — or anywhere in between — right from the cab.

Gremelspacher has used the depth control system on his own farm for eight years. "I change depth several times within the same fields, adapting to different soils and conditions. I

plant at different depths if the ground is wet or dry or if the soil is light or heavy."

The system uses screw-type electric actuators rather than hydraulic cylinders because of their pinpoint accuracy. There's one actuator on each row unit, connected through depth control arms to the depth gauge wheel on the planter. The units are all balanced by electronic controls that ensures equal depth for every row unit on the planter. The unit installs using existing bolt holes without any cutting or welding.

The system sells for about \$600 per row for Max-Emerge and International Early Riser planters. Gremelspacher plans to fit other planters in the near future.

For more information, contact: FARM SHOW Followup, U-Select-A-Depth, Philip Gremelspacher, P.O. Box 577, Walton, Ind. 46994 (ph toll-free 800 262-7634. In Indiana, call 800 845-2932).

PREVENTS PESTICIDE WASTE

Shut-Off Kit For Deere, Kinze Pesticide Hoppers

"With our Insecticide/Herbicide Hopper Shut-Off you can switch the hopper drive on or off in 30 seconds per unit," says Terry Jack, president of TL Fabrication, Victor, Iowa.

"It does away with having to dump the pesticide out, shutting the hopper gate or having the pesticide pulverized by the feed roller," Jack points out.

Key to the kit, which installs on Deere Max-Emerge, Kinze and New Idea planters, are split sprockets and a nylon spacer snap which replace the existing hopper drive sprocket.

To install, you remove the existing

hopper drive sprocket, slide on the 2 in. dia. sprocket which drives the pesticide hopper, then slide on the ¾ in. dia. sprocket which is coter-pinned to the shaft and driven by the planter's ground drive.

The kit sells for \$19.95, which includes both sprockets, the spacer snap and cotter pin. It's available through Deere, Kinze and New Idea dealers.

If not yet available at dealers in your area, contact: FARM SHOW Followup, TL Fabrication, Box 214, Victor, Iowa 52347 (ph 319 647-2121).