



With optional "crowder" wheel, new machine can merge windrows made by 7 to 14-ft. swathers.

LAYS TWO WINDROWS SIDE BY SIDE New "Windrow Merger" Speeds Baling, Chopping

"By laying the windrows side by side and chopping or baling both at once, you reduce trips through the field, get less soil compaction and save both time and fuel," says Karl Sachse, district sales manager for Gehl Company, West Bend, Wis., manufacturer of the innovative new "Windrow Merger".

Mounting on the front of 100 hp. or larger tractors, the machine picks up the windrow directly in front of the tractor and lays it next to the adjacent windrow so you can bale or chop both at once. The heavier hay flow going through the chopper helps produce a more uniform cut.

"It lets you make use of big horsepower tractors and choppers. Instead of driving faster to pick up single windrows in lighter hay—such as second or third cuttings—you can go slower but pick up two at once. And, unlike a front mounted rake, you don't get the leaf loss, or knotting and wrapping of the windrow," Sachse points out. The machine's also designed to work better on rock-infested ground, as it can be set low enough to pick up the windrow, yet high enough to avoid most rocks.

Although the machine's designed primarily for use with choppers, it can also be used to gather windrows for balers and as a windrow fluffer to speed windrow drying by moving the crop onto dry ground.



Seven ft. wide hay pickup lifts windrow and places it on 24-in. wide belt. Belt carries windrow to the side of the tractor.

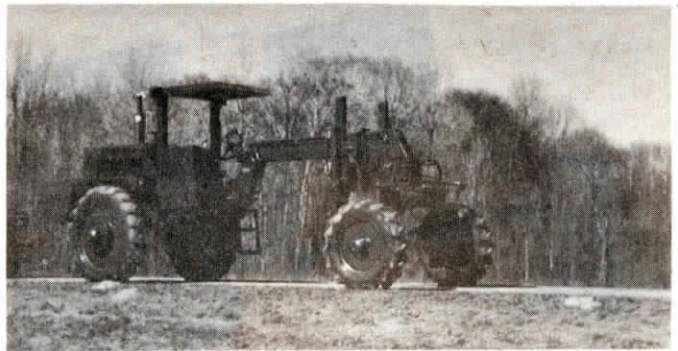
The 1,300-lb. unit mounts on a framework bolted to the tractor. Once initial installation is done, the machine can be taken off the frame by removing four pins, two hydraulic hoses and one spring. Sachse notes that while the machine requires a larger size tractor it probably uses a maximum of 10 hp.

The 10 1/2-ft. wide rig runs entirely off tractor hydraulics. The head, hydraulically adjustable up and down, rides on a large skid and has spring flotation. As you go through the field, the machine's 7-ft. wide hay pickup, picks up the windrow and places it on a 24-in. wide rubber belt. The belt lays the windrow to the side of the tractor. Belt speed is hydraulically adjustable by turning a knob on the bypass valve which allows you to place the windrow in the desired spot. With an optional 'crowder' wheel the machine can handle hay from 7 to 14-ft. swathers.

A large plexiglass window on the left side of the machine lets you see from the driver's seat that the windrow is feeding in properly.

The Windrow Merger sells for \$4,395. A limited production run will be made this year.

For more information, contact: FARM SHOW Followup, Gehl Company, West Bend, Wis. 53095 (ph 414 334-9461).



Arched bridge between front and back halves of tractor is made from 6 by 12-in., 1/2-in. thick walled tubing.

EQUIPMENT MOUNTS AT MIDSECTION

Big Tractor Carries Equipment Up Front

"It's got a rear-mounted engine, good visibility, and the ability to carry heavy 6-row equipment up front," says John Breen, Grand Rapids, Mich., who worked with machine shop operator Terry Weaver to build a 100-hp. row crop tractor that carries equipment at its midsection. Weaver and Breen have already sold their first custom-built tractor and are gearing up to build more.

The "Hy-Till" tractor is powered by a 100-hp. Cummins 4-cyl. rear-mounted turbo diesel. The engine drives an Eaton hydrostatic pump that powers Auburn hydraulic drives on each of the rear wheels. There are three other hydraulic motors on the machine to run the front-wheel assist, to raise and lower the 3-pt. and to operate carried equipment. Rear fenders serve as storage tanks for fuel and hydraulic fluid.

The heavy-duty 3-pt. is located just behind the front wheels. It raises and lowers on metal masts that support special hydraulic cylinders. "Building the 3-pt. was one of the trickiest parts of the tractor. We had to use special-built matched cylinders that are designed to raise and lower at the same time. On each side of the lift is a tube within a tube mounted on bearings and rollers for

smooth operation," explains Breen.

The arched bridge between the front and back halves of the tractor is built from 6 by 12-in. 1/2-in. walled tubing. There's 5 1/2 ft. of clearance under the bridge and 3 ft. beneath the axles. Front to back wheelbase is 14 ft. Tractor width is 6 ft. It's fitted with 12.4 by 36 rear tires and 11.2 by 24 front tires. Weaver built the weighted rear wheels from scratch. In order to provide better visibility of front-mounted equipment, the tractor is not fitted with a cab.

"The tractor is used to carry a hydraulic-powered vacuum seeder, a vegetable transplanter that carries 6 people, and a 6-row cultivator. The speed range is 0 to 16 mph. The farmers who bought the tractor previously used a big articulating tractor that was hard to keep on the row. Our Hy-Till is easy to control," says Breen. The Hy-Till tractor sells for \$35,000 and up, depending on options. He and Weaver also have plans to build a 30-hp. conventionally geared cultivator tractor with a similar configuration.

For more information, contact: FARM SHOW Followup, John Breen, 147 Frontenac S.E., Grand Rapids, Mich. 49508 616 243-9757).

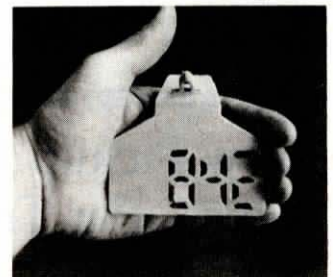
Create Your Own Ear Tags

With the new Dat-A-Tag ear tags for cattle you can quickly create your own ear tags.

"The tag features four LED-style windows that are premolded into it. Using a pocket knife, you remove the necessary knockouts to create the desired letter or number. With the one letter and three number windows you can create up to 25,974 combinations from one tag. The tags are also easy to read and won't fall out. If they do, we'll replace them for you free," says Rae Ann Jones, distributor for Dat-A-Tag Inc., Cody, Wyo.

Using a special applicator, you insert the Dat-A-Tag through the top of the animal's ear positioning the tag so it hangs in front of the long hair which can hide tags. The tag's tip snaps into a high impact plastic clip which is protected from snags by the upper ear flap.

The new tags are also equipped with insecticide slot which an insecticide pouch slips in. When the pouch is empty you refill it with the insecticide of your choice using a syringe. This allows you to switch insecticides when needed,



You remove "knockouts" to create desired letters or numbers.

and eliminates punching more holes in the animal's ear.

Dat-A-Tags are available in five colors—red, yellow, orange, green and white—and sell for 89¢ each, including clips and insecticide pouch. The special applicator sells for \$25.

For more information, contact: FARM SHOW Followup, Dat-A-Tag, P.O. Box 1930, Cody, Wyo. 82414 (ph 800 722-8303; in Wyo., call collect 307 527-7191).