

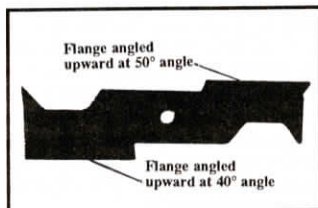
## New Mower Blade Cuts 25 to 30 Percent Faster And Keeps Deck Clean

"We started making them 3 1/2 years ago for our own use and couldn't believe how well they worked. Everyone who saw one work wanted to buy one so we put them on the market," says Joseph Hladik, manufacturer of the revolutionary new "H-Blade" which can be used in place of standard mower blades on any mower deck or big rotary mower.

The heavy-built blades have notches cut out of each end, which Hladik says give the blades a much more aggressive cut than straight-across blades. There are also angled "flanges" on the back side of each end of the blade which create a tornado-like turbulence under the deck that keeps grass from building up under the deck and lifts up grass that's laying flat on the ground. One of the flanges is angled upward at a 40° angle and the other at a 50° angle.

"The flanges are set at different angles, creating an uneven turbulence that's much more effective at lifting up grass and cleaning out the deck. It's like the difference between straight line winds in a storm and swirling tornado winds. The swirling, uneven winds do a lot more damage," explains Hladik, noting that since he fitted his mowers with the new-style blade, he's never had to clean out under his mower decks even in moist grass. "I've mowed in the rain and grass didn't stick with this blade in place."

The new-style blade, which works a lot like a scythe and which Hladik says let you cut at 25 to 30 percent faster speeds than a conventional blade (if you normally run a tractor mower in 1st gear, you can increase



to 3rd gear, says Hladik), also throws grass out with more force so it spreads it in a wider pattern and does a better job of filling baggers. If you have a mulching mower, Hladik says the increased turbulence, and the aggressive nature of the notched blades, also does a better job of mulching up grass and forcing it back down into the lawn.

Hladik makes the patented blade to fit any size mower. When used on large Bush Hog-type rotary mowers, Hladik says it will let you do things no other mower will do. "It works great to chop up cornstalks because it sucks the stalks up from the ground. We've even used it successfully to cut up 8-ft. tall sunflowers," he says.

The blades sell for about 50 percent more than cheap off-the-shelf blades, but Hladik notes that besides doing a better job, they're built heavier and last two to three times as long. Blades up to 17 in. sell for \$23.75, from 17 to 25 in. long sell for \$26.25, and from 26 to 35 in. for \$35.

Contact: FARM SHOW Followup, Tri-H corporation, Rt. 1, Box 145-A, Hennessey, Okla. 73742 (ph 405 853-4563 or 4561).



Cart has two up-front drive wheels powered by a belt-driven transaxle.

## Motor-Driven Wheelbarrow Hauls Up To 800 Lbs.

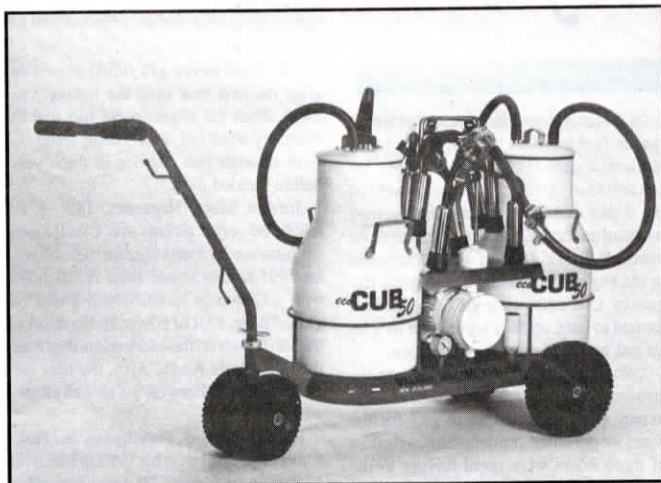
Handy new powered dump cart takes on jobs you'd never even consider with an ordinary wheelbarrow, say manufacturers of the new DR Powerwagon.

Driven by a 5-hp. Briggs & Stratton, the cart has two up-front drive wheels powered by a belt-driven transaxle. The flatbed frame, which measures 32 by 40 in., is made from 14-ga. steel tubing and has stake pockets to accommodate removable side panels. The box dumps manually. Engine controls and a hand brake lever mount on the handles.

Has four speeds forward and one reverse. Top speed is 8 mph. Carries loads up to 800 lbs.

Lists for \$1,395 (with discounts up to 20 percent, depending on time of year). Options include a ride-behind sulky, all-terrain tires, electric start, and wheel weights.

Contact: FARM SHOW Followup, Country Home Products, Ferry Road, Box 89, Charlotte, Vermont 05445 (ph 800 446-8746; fax 802 425-4017).



New Zealand-built milker is equipped with two poly buckets and state-of-the-art pulsator claws.

## Portable Mini-Milker For Cows, Goats, Sheep

New mini-milker imported from New Zealand and is great for smaller herds or can be used to isolate milk from diseased cows.

"It's also great for show animals when you don't want to use the common milking facilities at a fair or other type of livestock show," says Ricki Boyd, president of Boyle International, U.S. importer of the Walker mini-milker.

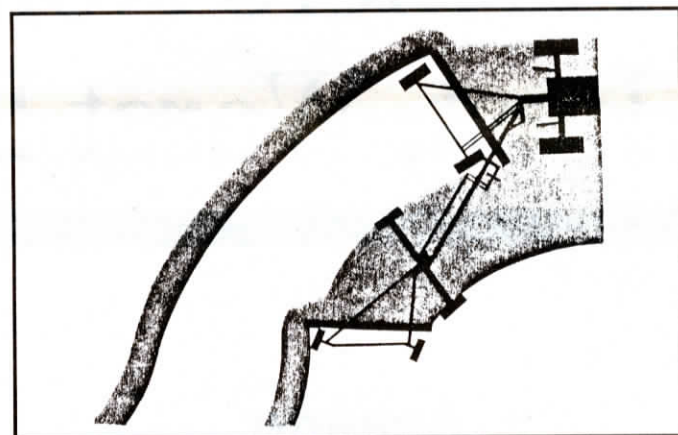
In New Zealand, some farmers take the mini-milker right to the field to milk cows (both gas and electric-powered units available). Both single and double milker units mount on small 4-wheel carts with pneumatic tires that make it easy to run across

farmyards and fields.

The Cub 50 double-milker has a 1-hp. electric motor and a carbon vane vacuum pump. It has two 7 gal. poly buckets and uses state-of-the-art pulsator claws.

They're made with the same high standards as the best parlor milkers," says Boyle. The Cub 50 double milker sells for about \$2,200 and a single milker unit for about \$1,800.

Contact: FARM SHOW Followup, Boyle International, P.O. Box 3746, 8112 Delwood Ave., Urbandale, Iowa 50322 (ph 800 278-6244 or 515 278-4097; fax 515 278-6248).



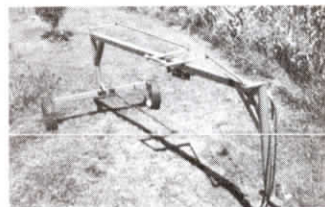
New-style rake is fitted with steering "tie rods" on top of pivoting hitch bar that control direction of rear rake on corners or on contours.

## New Double Hitch "Steers" Rear Rake Around Corners

Most dual rake hitches bunch or miss hay in corners or on contours, says Cletus Urbain, manufacturer of the new Trailrite dual hitch that automatically steers the rear rake on turns.

The new-style "steering hitch" handles two wheel rakes or two basket rakes. It's fitted with steering "tie rods" on top of the pivoting hitch bar that control direction of the rear rake. A turnbuckle connector at center is used to change raking width from 10 to 14 ft., while a hydraulic cylinder is used to switch the rear rake from its left or right handed position. Extending the cylinder half way puts the two rakes in line for transport.

"It steers the rear rake just as if it was being pulled by a second tractor," says Urbain. "It works better than other dual rake hitches because it eliminates the need to manually adjust the cylinder on corners or turns. Anyone can do a perfect job. If you want to save more leaves, you can use both



left and right hand basket rakes to keep from carrying hay all the way across both rakes. If you have basket rakes equipped with dolly wheels, you can remove the wheels to keep them from running over the windrow. To switch from making two windrows to a double windrow you simply adjust the turnbuckle and extend the cylinder all the way in the opposite direction."

Sells for \$2,500 (plus S & H).

Contact: FARM SHOW Followup, Urbain Welding, 425 4th Ave. N.E., Dyersville, Iowa 50240 (ph 319 875-8533).