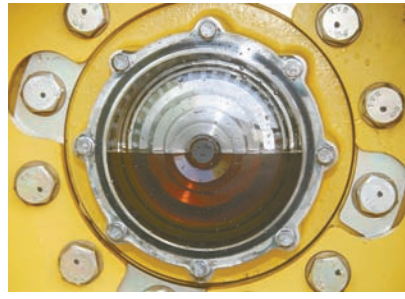




STX Idler



MT Idler



John Deere Idler



Camso Cap KCP3777

“Kile® Clear View® Caps” are designed for rubber track tractors. See the level & clarity of the oil in idlers and rollers.

Kile® Clear View® Caps For Rubber Track Tractors

The patented Kile®Clear View® Caps for rubber track systems are used in farming and construction, replacing steel caps. Operators can easily see the level and clarity of the oil in their idlers and rollers making it simpler to ensure that proper oil levels are maintained.

This injection-molded product is made from scratch-resistant, UV-protected polymer that withstands extreme temperatures and high impact. Kile®Clear View® Caps are made in

the USA and come with a 5-year pro-rated warranty. Kits or individual caps, come with the necessary hardware for installation and instructions.

Kile®Clear View® Cap Kits are available for Case IH STX/ 9300 Series Quad Trac, AGCO MT 700/800, Cat 35/95, Lexion/ Claas Track Combines, John Deere 8000 & 9000 T, RT & RX Series, Camso, Delta Versatile, and Griptrac Systems.

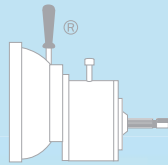
Owner/operators are invited to visit Kile Mfg.'s website for information and prices

for the kits, individual caps, product update, and new products. A continually updated dealers list can be viewed on the website. Brochures and more information can be obtained upon request.

Contact: FARM SHOW Follow-up, Kile Machine & Mfg. Inc., 401 Squires Road, Rosalia, WA. 99170 (ph 509-569-3814; info@kilemfg.com; www.kilemfg.com).

Reader Inquiry No. 03

Tayloria



Gear Reduction/Clutch PTOs

A positive link between your engine and equipment



Free Catalog

Reducing Speed, Increasing Power

If you use PTO equipment, then you may want to take a look here. Whether you need gearbox assemblies for your 20 hp. or as much as 350 hp. engine, Beiler Engine and Mfg. has what you need with its Tayloria brand gearboxes. They have four models ranging from SAE #5 to SAE # 1. Housing flywheel adaption from 6 1/2 to 14 in. Clutch drive, output shafts of 1 3/8 to 6 in. (540 rpm), 1 3/8 to 21 in. (1,000 rpm), and 1 3/4 to 20 (1,000 rpm). Splined or straight-keyed shafts. Numerous gear ratios available from 2-1 to 6-1 (mostly opposite engine rotation). Our goal is to keep standard units in stock and turnaround times short. We do that by manufacturing right here in the USA.

Reader Inquiry No. 41

Made in USA

717-529-6595

Beiler's Engine & Mfg. LLC

1630 Georgetown Rd., Christiana, PA 17509

Manufacturing, Sales, & Service