

Farmer-Built Inventions From 30 to 40 Years Ago

Veteran farm reporter C.F. Marley of Nokomis, Ill., has been the country's leading photographer of new farm equipment from the mid-1950's right up to the present. Recently, he went back through his files, pulling out some of the outstanding ideas from his early days on the farm beat.

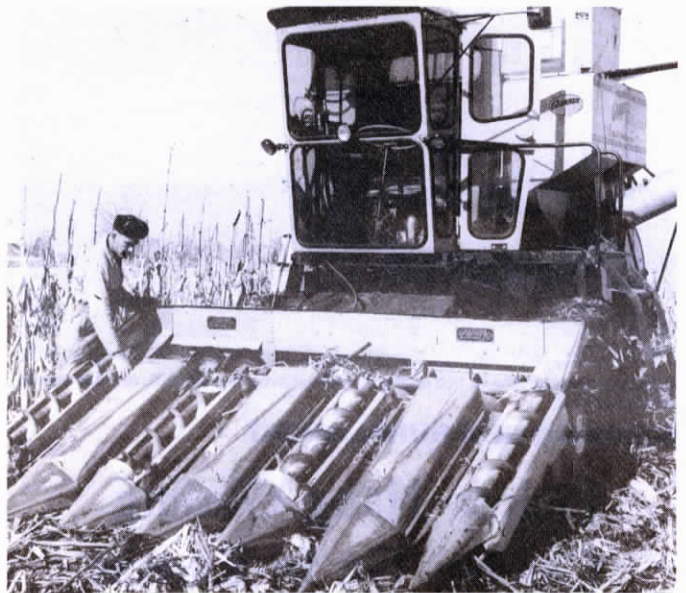
"All of these inventions would probably have appeared in FARM SHOW if the magazine had been around at the time," he notes.



Corn Sheller Trails Picker

In 1958, before combine cornheads came on the market, Bernard Todt, Highland, Ill., got a lot of publicity when he came up with a hitch that let him pull a sheller directly behind his corn picker so he could shell corn in the field as it was harvested.

After the corn was shelled, it was augered up into a trailing wagon. "It was strung out pretty long, but it worked real well," Todt says. The sheller, which had a rotary shelling cylinder, was powered by an air-cooled Wisconsin engine. "I used it for 4 years."



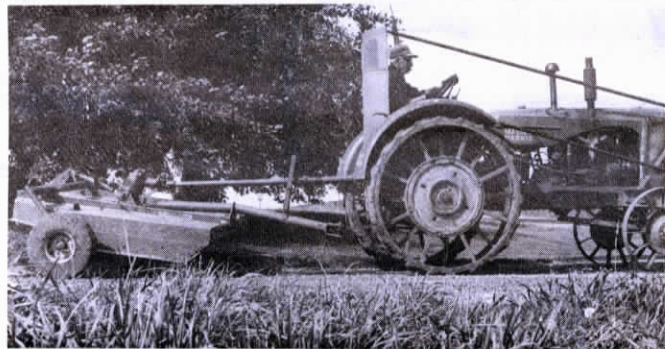
Header Augers Saved His Crop

Today there are several different attachments on the market for picking up down corn, but in the early 1960's, Gayle Brockelsby, Edinburg, Ill., says he couldn't find anything to do the job so he came up with his own method.

Brockelsby had been experimenting with corn in 20-in. rows when bad weather knocked his crop to the ground. That's

when he got the idea of installing external augers on his Gleaner header. "I needed both right and left hand augers. I found the right kind of augers in a 227 John Deere corn picker," he says.

To turn the augers, Brockelsby used Char-Lyn hydraulic motors. "Some of the corn was practically flat but this header put it all through."

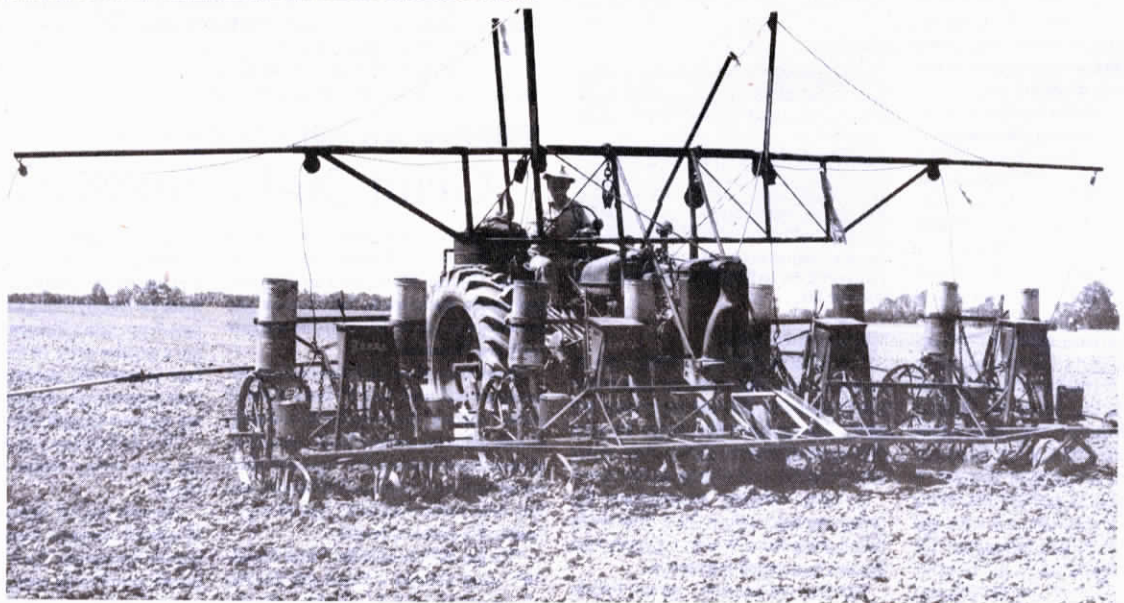


Brush-Fighting Tank

Faced with the problem of clearing off some brushy land, the late Theodore Shambaugh, Oakley, Ill., decided to build a "tank".

He equipped an old Massey Harris tractor with steel wheels front and rear, making the spoked front wheels himself. He covered

the radiator with a steel shield and protected the operator with armor plating on the rear to deflect flying chunks of wood. The pto-powered IH chopper he used was equipped with puncture-proof solid rubber tires.



First 8-Row Corn Planter?

In the mid-1950's, Earl Schwarm, who farmed near Loogootee, Ill., got tired of waiting for a machinery company to come up with an 8-row corn planter so he went

ahead and built his own. It worked so well, he used it right into the mid-60's.

To build it Schwarm attached four 2-row Deere planters to the front of a front-mounted

"pusher" toolbar. To lift the planters, he built a "bridge" over them and used pulleys and cables to raise them up. One control raised them all at once. One observer said,

"When he got to the end of a field, an awful lot happened but it all worked fine."