

IDEAL FOR WET CONDITIONS

Deere Header Wheels

Wet conditions can cause problems for the automatic header functioning of Deere bean row heads, according to Couser Machine and Supply, Nevada, Iowa, manufacturer of a new wheel attachment for solving the problem.

Doug Couser explains that, in wet areas, steel skids often encounter problems with mud and residue buildup. By replacing the skids with wheels you maintain the automatic header height control in adverse conditions since the wheels will roll through the mud.

Couser manufactures a one piece, offset, adjustable wheel bracket that bolts in place of the skid shoes. You

attach two brackets per row and then attach 4 by 12 in. cultivator gauge wheels. No changes are made on the header height control.

Couser explains that "there are other brackets on the market but they're in two sections and tend to work loose. Plus, they don't have the dog leg to bypass the springs where the bracket attaches."

Brackets sell for \$6. New wheels sell for \$22.50, plus freight.

For more information, contact: FARM SHOW Followup, Couser Machine and Supply, Rt. 2, Nevada, Iowa 50201 (ph 515 382-5560, or 4897).

AUTOMATICALLY VENTILATES DURING POWER FAILURES

New Emergency Vent System Saves Hogs

"When two of our neighbors lost all their hogs, we decided we'd better come up with something to protect ourselves," says Gordon Lee, Fairfax, Minn. He and John Simmons, his electrician, developed a new emergency ventilation system for confinement buildings.

The basic system consists of two electric fans, two deep cycle batteries, a trickle charger, and controls. When the power to the building shuts down — for whatever reason — the controls trigger the fans, which immediately begin ventilating the building. The fans operate for up to 9 hours on fully-charged batteries.

"A timer runs the fans for 5 min. or more each day so they're always ready. There's also a test switch so you can check the system

whenever you go through the barn, if desired," says Lee.

The system fits either 110 or 220-V systems and a local electrician can easily wire it up with the included instructions.

Lee has a 30 by 80-ft. farrowing building and says the basic system — which includes two 12-in. fans — would keep the building more than adequately ventilated in case of a power outage. The basic system, will work on any type confinement building. An alarm, to let you know when the power goes off, is optional.

For more information, contact: FARM SHOW Followup, Gordon Lee, Sim Lee, Inc., Box 56, Fairfax, Minn. 55332 (ph 507 426-7885, or 637-5251).

HEADER REVERSER KIT LETS YOU UNPLUG "PLUG-UPS" FROM THE CAB

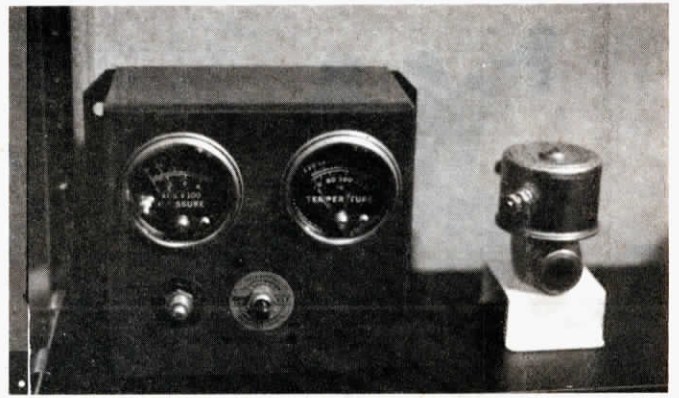
Easy New Way To "Unplug" Combines

"We wouldn't farm without it," says Bob Dugger about the hydraulic header reverser installed on the Deere 7700 combine he operates on the Bob Kramer farm near Colfax, Wash.

The header reverser kit, manufactured by Ed's Custom Work, of Garfield, Wash., essentially reverses the hydraulic reel drive pump so that it runs in reverse, backing out any material that may be plugging up the feederhouse or feeder auger.

"It'll reverse everything from the feederhouse on out to the combine reel," says Ed Mitzimberg, who began manufacturing the kit after a local farmer — Rich Olson of Garfield — came up with the idea.

The kit is designed to fit Deere 6602 and 6622 hillside combines because those are by far the most popular combines in Mitzimberg's area of Washington. However, several area farmers have adapted the kit to other



When oil pressure or water temperature reach a preset level, the fuel valve, right, shuts down the engine.

MONITORS OIL PRESSURE, WATER TEMP

Automatic Shutdown For Tractors, Combines

You can tell youngsters and inexperienced help to watch oil pressure and water temperature when they're operating your machinery but there's no way you can be sure they'll do it.

Automatic shutdown controls manufactured by Murphy Manufacturing Inc., Tulsa, Okla., act as a cheap insurance policy that's guaranteed to shut down machinery if problems develop. The controls consist of water temperature and oil pressure gauges with needles that have electrical contact points on them. As soon as the needles reach the danger zone — which you can preset — a solenoid-activated valve in the fuel line is activated. It shuts off the fuel, killing the engine before damage can occur.

"We've sold these for years for use on irrigation and other unattended engines but they've never been widely promoted for tractors and combines," says Art Murphy, president of Murphy Safety Switch of California, Inc., a division of Murphy Manufacturing. "Now that farm

machinery has gotten so expensive and extremely complicated, there's a need for protective controls."

The company has hundreds of switches that'll monitor other engine and machinery operations such as vacuum pressure, hydraulic pressure, coolant levels, vibration, and so on. Gauges can be packaged together to monitor whatever equipment necessary.

The WD-300 package of gauges is the standard automatic shutdown for diesel and gas engines, monitoring oil pressure and water temperature. According to Murphy, it can be installed in a half an hour or less on most equipment. It sells for \$100.25. Less expensive controls are available with an alarm rather than a shutdown solenoid.

For more information, contact: FARM SHOW Followup, Art C. Murphy, Murphy Safety Switch of California, Inc., P.O. Box 788, Palmdale, Calif. 93350 (ph 805 272-4700).

Deere combines. Mitzimberg, who feels it'll adapt to most makes of headers and combines, welcomes the opportunity to work with interested farmers with other makes of combines in adapting the kit. He notes that some models of Deere and other combines are now being outfitted with similar but more expensive factory-built header reversers.

The kit taps into the reel drive with a diverter valve that turns it into a pump. A set of extra hoses reroutes the diverted fluid. A control mounts in the cab next to the clutch. To activate the reverse, you simply push the control lever. "The reverser will kick out 99% of all plug-ups," according to Mitzimberg.

"It takes just 30 min. or less to install, yet it'll save many hours of downtime," says Bob Dugger who installed a header reverser on a 6602

combine in addition to the Deere 7700 he runs on the Kramer farm. "We haven't had a single problem with it. You can quickly get rid of plug-ups from the cab."

A local Deere dealer who sells the kit, Greg Parchin Colfax, Wash., says there's been no problems with any of the kits he's sold over the past couple seasons. He's not sure if the kits will affect Deere's warranty. "We haven't had any reason to find out," he told FARM SHOW.

The kit sells for \$210 and comes with installation instructions.

For more information, contact: FARM SHOW Followup, Ed's Custom Work, P.O. Box 37, Garfield, Wash. 99130 (ph 509 635-1450).