

# Farmall Repowered With Chevy Engine

When Charlie Beaver retired from a career in law enforcement, he acted on a long-considered idea to replace the original engine in his 1936 Farmall F20 tractor with a Chevy 454 motor.

"I was getting old, so thought I'd better get it done, or I wouldn't live long enough to enjoy it," laughs Beaver. "I already had the tractor and the 454 plus a big shop to work in, so I started the project about 2 years ago. It took me a full year to complete."

He began by restoring the body of the tractor, including sandblasting and repainting it gray to match the original pre-November 1936 color scheme.

The original gas-powered 221 cu. in., 4-cyl., 20-hp. overhead valve motor had frozen up.

"My whole concept was to keep it looking as original as possible," Beaver says. "But by replacing the engine, I had to fabricate everything involved. You can't just buy parts over the counter for this kind of project."

He left the fuel tank in the same location, and the transmission, drive train, radiator, and hood remained as manufactured. He modified the engine with an upgraded camshaft, aluminum intakes instead of heads, and headers that ran up each side of the hood.



Chevy engine runs smoothly and puts out 400 to 450 hp. Beaver drives the modified tractor in parades and says it's always a big hit.

Beaver says the trickiest part was positioning the motor so he could still use the original radiator. Designing and building the coupler was also a challenge.

"Because it's a Chevy engine, I ran GM bell housing, clutch and pressure plate, and had to hook it all to the original transmission. A buddy with a machine shop helped me fabricate all of that. Then I built the mounts, brackets and connections to line everything up."

The engine runs smoothly and puts out 400 to 450 hp. Beaver drives the modified tractor in parades and says it's always a big hit.

"It's a project I'm really proud of as everything about it is done right, not just cobbled together. I think I outdid myself on this one."

Contact: FARM SHOW Followup, Charlie Beaver, 1564 S. Morgantown Rd., Morgantown, Ind. 46160 (ph 765-318-2458; shellybeaver@hotmail.com).



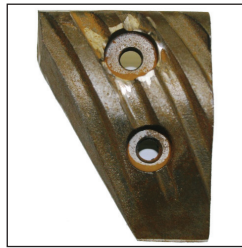
K 505TD Kile Thresh Bar



K 506 Kile Thresh Bar



K 507 Kile Thresh Bar



K520-2 Sm Tube Bar



K521-2 Spike Sm Tube Bar

## Kile® Thresh & Transition Bars

Kile® high performance patented thresh bars improve rotor thresh & provide cleaner grain samples for Case IH AFX/Specialty & small tube rotors.

K 505TD is a ten degree bar to maximize the contact surface on the top of the bar to the concave.

K 506 bar is an all purpose bar with extended rasp ramp which begins rasping sooner, allowing more crop to rub on itself. These deeper & wider rasps, on each bar, are aggressive yet gentle on the crop, allowing the material to be managed thru the threshing/separating system. K507 extended rasp spiked bar (with or without carbide) is used, as needed, when cutting rice, corn & beans.

Our small tube bars have dual bolt mounts, to secure the bars to the rotor. We have 4 dual bolt styles, shown are the 28 degree K520.2 extended rasp all purpose bar for small seed and grain to corn & beans. And the K 521.2

spike bar, available with or without carbide. The carbide tip dramatically extends the spike wear and is the go-to bar for rice.

Noted features of thresh bars:

- High performance bars for Case IH rotors
- Reduce over-threshing
- More surface area for exceptional crop feeding
- 30-50% larger surface area per bar than OEM
- Enhances separation of material for a cleaner tank sample
- Aggressive feeding yet gentle on all crops
- Dual bolt mount on small tube bars
- Made in USA of cast chrome alloy (high impact resistant) excellent wear ability

### K552 & K552ST Transition Bars

Welded AR steel bars which mount in the cone area of flagship combines. These will assist in extending the life of your cone as it transitions the crop into the concave area, where the threshing occurs.

Visit Kile's website for prices, dealer list, & other bar photos.

Contact: FARM SHOW Followup, Kile Machine & Mfg Inc, 401 Squires Rd, Rosalia, WA 99170 (ph 509-569-3814; info@kilemfg.com; www.kilemfg.com).

Reader Inquiry No. 11

