

Foot throttle is standard for most models.

MAKES IT EASIER TO OPERATE REAR MOUNTED EQUIPMENT

Reverse Steering Kit

If you're tired of driving in reverse with a rear-mounted loader, snowblower or post hole digger on your tractor, why not turn the whole driving mechanism around?

It's easy to do with the unique Edward reverse steering kit, which requires no modification of the tractor.

"The Edwards Kit requires no change of gearing in the tractor. Only the pedals are turned around. You sit facing in the opposite direction and everything is still in the normal driving position for right and left hands and feet," explains Jerry Searl, general manager of the Edwards Equipment Company, Yakima, Wa. "You can drive as fast as your tractor will go in reverse."

With reverse steering, the tractor

can be equipped with roll bars or canopies used on any conventional tractor. A foot throttle is now standard equipment for most models, and can be purchased as an optional feature on others.

Edwards reverse steering kits are available for utility tractors, and a wide variety of large tractors, including John Deere sizes up to 2630 and the 4020's; Massey-Ferguson up to model 165; Ford up to model 4000; International up to Model 674; and Case up to model 885.

For more details, contact: FARM SHOW Followup, Edwards Equipment Company, 4312 Main Street, Yakima, Wash. 98903 (ph 509 248-1770).

HELPS KEEP SOIL FROM DRYING OUT

Leveler Attachment For Chisel Plows

"We made one for our own farm use. When neighbors saw it, they asked us to build them one. We're now set up to manufacture our chisel plow leveler on a large scale and to market it factory direct to interested farmers," reports Van Bialon, manager of DeYoung and Sons Farm Equipment, DeMotte, Ind.

In addition to smoothing the soil surface for subsequent field operations, the leveler attachment helps keep the soil from drying out, explains Bialon.

Designed to fit most makes of 2 or 3 bar chisel plows, the leveler is equipped with a 2 in. by 2 in. horizontal bar. Adapts to chisel plows with or without fold-up wings.

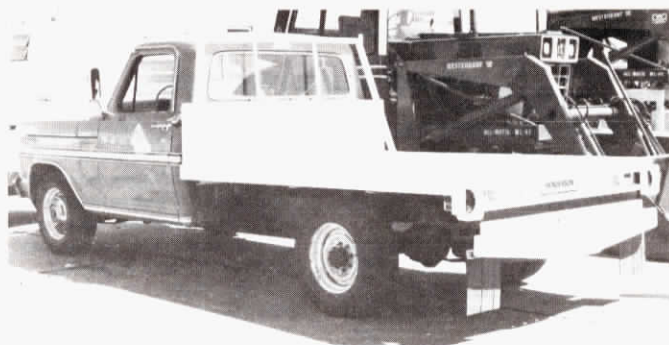
Most operators use 7 in. shovels on the leveler, spacing them about 2 ft. apart on a 2 bar chisel plow, and 1½ ft. apart on a 3 bar machine. Some operators run two 7 in. sweeps side

by side behind each chisel on a 3-bar model. Bialon points out.

"Since the leveler sweeps travel behind the chisel shanks, they don't cause plugging problems. For most field conditions, a hand operated ratchet jack is sufficient to set depth of the leveler sweeps. If you're in flooded ground with a lot of trash on the soil surface, you can put a hydraulic cylinder on the leveler to make it easy to dump periodically if it does plug up in extremely trashy conditions. Generally, however, plugging hasn't been a problem," says Bialon.

Normal operating depth of the leveler is 3 to 4 in. A 14 ft. long leveler sells for \$295, FOB. Weight of the unit is right at 30 lbs. per foot.

For more details, contact: FARM SHOW Followup, DeYoung and Sons Farm Equipment, Inc., Box 66B, DeMotte, Ind. 46310 (ph 219-987-4545).



"Headache" rack at front of platform protects cab when hauling pipe and other materials. Entire floor is recessed to help keep loads from sliding off during transit. Cost is \$750 installed.

ADAPTS TO NEW OR USED TRUCKS

Utility Flatbed Fits Most Pickups

Ever thought about replacing the regular box on your pickup with a flatbed utility platform? If so, you'll get a lot of encouragement from Everett Henderson, president of Henderson Manufacturing, Woodward, Okl. Farmers and ranchers from all corners of the U.S. are driving their new or used pickups to his Oklahoma plant to have them equipped with flat utility platforms.

"You can feed off of it, use it for fencing and/or dozens of other jobs that are awkward to handle with a conventional box," Henderson told FARM SHOW.

The flat platforms are available for ¾ or 1 ton GMC, Ford, Chevrolet or Dodge pickups. The bed for a one ton pickup measures 90 in. wide and 108 in. long. Four stake pockets are built into the platform. There is a recessed 2-5/16 in. ball hitch imbedded in the center for towing a gooseneck trailer. When not in use, the hitch is covered with a floor-flush lid.

"Most owners keep the pickup box and put it back on when they sell the pickup. The shiny new box makes the old pickup more attractive and thus worth more money," explains Henderson. "Or, if they prefer, we'll take the box in trade on the flat platform. In some cases, farmers and ranchers have ordered pickups direct from the factory without a box, then brought them here to have the platform installed. We prefer to make installations by appointment. We can have a pickup in and out of here, ready to go, in less than 3 hrs."

If desired, detachable sides can be slipped into the flatbed's stake holes to make a grain-tight box. The pickup floor is made of ¼ in. plate steel through the center where the ball hitch for a fifth wheel trailer connects.

For more details, contact: FARM SHOW Followup, Henderson Manufacturing, Box 1127, Woodward, Okl. 73801 (ph 405 256-6016).



Most owners equip rear-mounted leveler attachment with 7 in. sweeps. They're spaced 1 ft. apart (1.5 ft. apart on 3 bar chisel plow) and are set to run about 4 in. deep.