

PUFFS OF AIR BLOW PIGS FROM PERIL

New "Blowaway Crate" Saves Pigs From Death

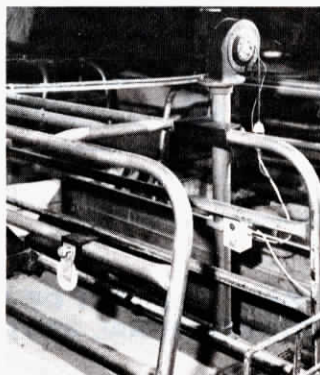
An English inventor who discovered that pigs run away from blowing air is now selling a new add-on attachment for farrowing crates that's designed to eliminate crushing deaths of pigs during the first few days after birth.

Marketed in the U.S. and Canada by Louck's Ag Supply, the new "Blowaway" system creates a gentle air flow beneath a standing sow, driving piglets away to the safety of the creep area. When the sow lays down, the device automatically shuts off — with the aid of an electric eye — and the pigs rush back to eat.

"In a recent test of 20 litters on a farm where 1 to 2 pigs per litter had previously been lost due to crushing, only 1 pig was killed with the Blowaway system in place," says Tom Louck, Grinnell, Iowa. "Since the first 3 to 4 days are critical, we recommend the system be left in place for that length of time. The system runs very little because the sow reclines most of the time."

The Blowaway system consists of a 300 watt electric fan mounted on a 3-ft. length of down pipe made from 2½ in. dia. PVC. The vertical down pipe tees into a horizontal pipe which is strapped to the lowest bar of the farrowing crate. This pipe has 13 small holes drilled into it aimed at the bottom of the crate. A bracket at the top of the down pipe is designed to fit any crate and fastens with two thumb screws.

An electric eye is attached to the down pipe and is directed just above the sows back when she's laying down. A receiver is positioned on the



Puffs of air, activated automatically by an electric eye, scare pigs away from beneath the sow, preventing death by crushing.

opposite side of the crate. When the sow stands up, the beam is broken and the fan comes on. A red indicator light lets you know at a glance if the unit is working.

"Air blowing under the sow is actually 1 to 2° warmer than the air already there so it doesn't chill the pigs," Louck told FARM SHOW.

A farmer with 20 crates needs 6 to 7 Blowaway units to outfit the operation, moving them from sow to sow as they farrow. No tools are needed to install the units.

The Metadata Blowaway sells for \$340.

For more information, contact: FARM SHOW Followup, Loucks Ag Supply, 500 4th Avenue, Grinnell, Iowa 50112 (ph 515 236-4825).



"You can mount duals by yourself and do it quicker," says Lee Gulbrandson, inventor of the "Dualee"

SECURES TIRE WHILE YOU ALIGN THE BOLT HOLES

"Dualee" Simplifies Dual Tire Mounts

Mounting duals is a one man job with new "Dualee" mounting pins invented by Lee Gulbrandson, Stromsburg, Neb., after he nearly lost a finger mounting a tire at his tire service center.

"On most tractors, it takes two or three men to maneuver a tire into position. With the Dualee you can do it by yourself and do it quicker," says Gulbrandson.

The Dualee consists of two pins that are smaller in diameter than the tire mounting bolts. The pins screw into the tire bolt holes. Once the tire is lifted into mounting position, safety clips on the pins hold the tire in position while holes are lined up and bolts secured. Once the tire is secure, the Dualee pins are removed and bolts inserted into the holes they occupied.

The Dualee kit will fit all major



The two Dualee pins screw into tire bolt holes and are removed once the other bolts are in place.

tractor brands. Specific sizes are available by wheel bolt size and thread. The kit sells for \$19.95.

For more information, contact: FARM SHOW Followup, Lee's Tire Co., P.O. Box 63, Stromsburg, Neb. 68666 (ph 402 764-2411).

FITS OVER ANY TRUCK OR PICKUP TIRE

"Mechanic's Step" Makes Engine Work Easier, Safer

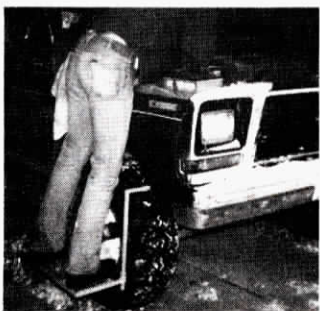
It's a lot easier and safer to reach all vital engine parts on trucks and pickups with the new "Mechanic's Step" developed by Henry Yocum, Pocahontas, Iowa.

The step slips over the top of any tire, tightly grasping the tire sides and top when you put weight on it. Once you're through, or if you have to move it to the other side of the vehicle, it slips right off.

The step is adjustable up and down and for varying tire widths. Yocum makes the step in two sizes. The first, for pickups, sells for \$47.50. A larger model, for larger trucks, sells for \$54.25.

For more information, contact: FARM SHOW Followup, Henry

Yocum, Hwy 3 East, Pocahontas, Iowa 50574 (ph 712 335-4182).



New Mechanic's Step adjusts up and down for varying tire widths.

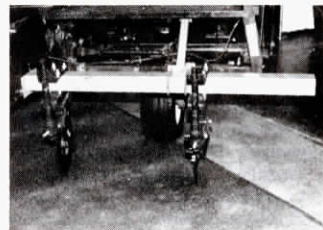
MOUNTS TO FRONT OF PLANTER

No-Till Frames For Cyclo 400's

Now you can convert your International Cyclo 400 planter to no-till with a special kit introduced by Jerry Johnson and Associates, Paxton, Ill.

The No-Till kit includes a 4 in. square toolbar that mounts to the front of the planter. One toolbar fastens to each side of the planter hitch. Each toolbar attaches to the planter frame with 2 bolts, and to the planter hitch with four bolts. Longer planters will have additional mounting brackets.

A kit for a six row, 30 in. planter weighs 750 lbs. and cost \$450. Kits are available for planters up to 12 rows. Yetter coulters, clamps and shanks aren't included in the kit but are available for \$175 per row.



No-Till toolbars mount in front of the planter, one on each side of the planter hitch.

For more information, contact: FARM SHOW Followup, Jerry Johnson and Associates, Box 82, Paxton, Ill. 60957 (ph 217 379-4155).