

## Air Filter Cleaning Service

A new service offered by an Illinois company cleans diesel engine air filters for only half the cost of buying a new filter. Lets you clean a filter as many as 20 times.

Farmers ship dirty filters to the company to be cleaned by a patented new machine that uses a combination of sonic pulsation and vacuum to remove dirt. The filter rotates between four air jets which travel up and down the length of the filter, creating a sonic pulsation effect on the filter pleats that releases dirt which is then vacuumed.

Bill Galloway, president, Nu-Air Corp., Normal, Ill., says, "We charge \$20 to \$30 per filter depending on size. Each filter may be cleaned up to 20 times before being replaced. We encourage farmers to buy an extra filter and to send us their old ones to have cleaned and returned. The machine can handle filters 12 to 30 in. high and up to 18 in. in diameter. Gas engine filters are smaller and less expensive so they're generally not worth cleaning.

"It takes a special machine to clean dirty air filters without damaging them. People have tried using air pressure to clean them, but if you use too much pressure you'll damage the filter. Cleaning a filter with water can weaken it and cause rust, and also solidify some of the dirt rather than remove it. Our machine restores a dirty filter to within 98 percent of a new filter's holding capacity and actually makes it work more efficiently than a new one. A protective



Bill Galloway says his company's patented new machine uses a combination of sonic pulsation and vacuum to remove dirt from diesel engine air filters.

cake of dust, or 'precoat', that initially collects on a new filter is what allows it to operate at maximum efficiency. Our cleaning process automatically leaves a coating on the filter so that it starts out at maximum operating efficiency rather than spending the first 20% of its life getting up to maximum efficiency. "Filters are weighed and flow checked both before and after the cleaning process. A halogen light is also used on each filter to check for imperfections and to make sure there are no holes in the filter."

The company is setting up dealers across the U.S.

Contact: FARM SHOW Followup, Nu-Air Corp., 2219 W. College Ave., Normal, Ill. 61761 (ph 309 888-4331).

## Radio-Equipped Tire Valve Caps Monitor Air Pressure

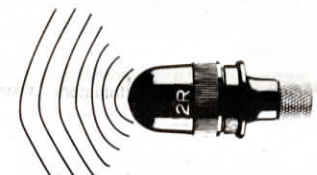
The hottest new product in the trucking industry comes from Australia - "Tiremate" tire pressure sensors that automatically alert drivers when air pressure is low.

U.S. Importer Gary Downey of Advantage Enterprises, Inc., says he's also had interest from farmers in the new radio-equipped valve stem covers which can be used on any pneumatic tire.

The valve caps contain tiny half-ounce transmitters that send a high-frequency signal to a monitor in the cab if tire pressure drops below a preset point, setting off a buzzer and a warning light.

"You can save a tremendous amount of fuel by always running on properly inflated tires and prevent damage to underinflated tires," says Downey, noting that he's also had a lot of interest from the RV industry who looks at Tiremate as a way to avoid flats in out of the way locations.

To install, you simply screw the caps on normally over the valve stems and install the monitor in the cab. The display module - which is customized for each vehicle - shows the location of each wheel on the vehicle. Since each wheel sensor has it's



Valve stem covers contain tiny transmitters that send signal to monitor in cab if tire pressure drops below preset point, setting off buzzer and warning light.

own signal code, the monitor can tell you at a glance exactly which tire is underinflated.

"Underinflation regularly costs truckers and RV'ers 5 to 50% of their mileage. We can totally eliminate that loss because, once installed, keeping tires properly inflated is easy, even on an 18-wheeler," says Downey.

Wheel sensors are fitted with mini battery packs that last one year. Price ranges from \$495 to \$695, depending on the number of wheels being monitored.

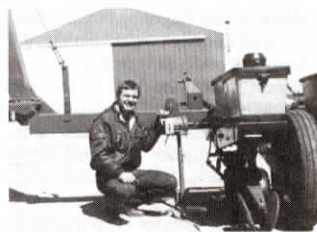
Contact: FARM SHOW Followup, Advantage Enterprises, Inc., 1610 Elm St., Harrisonville, Mo. 64701 (ph 816 887-3505; fax 816 887-3705).

## Easy-To-Use Planter Calibrator

You can quickly and easily get your planter ready for spring with this easy-to-use planter calibrator that lets you calibrate a 12-row planter in 30 min. or less.

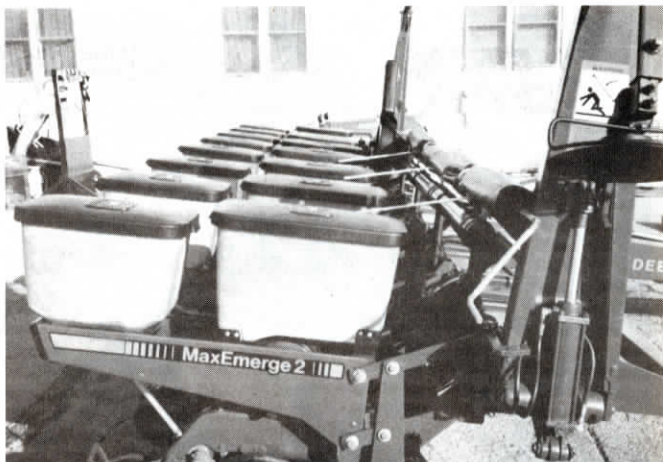
To use, you simply connect it to the drive shaft and run the unit for a pre-determined time to simulate your planter speed (instructions included). It comes with pop-on/pop-off couplers to fit any planter using a common drive shaft. It's bi-directional for use at either end of planter. Can be used to set seed population and calibrate insecticide boxes, as well as rates for granular herbicides and fertilizer.

Sells for \$630.



New calibrator connects to drive shaft and can be used at either end of planter.

Contact: FARM SHOW Followup, Ag-Products, Inc., 8650 Rothwell Road, Davis Junction, Ill. 61020 (ph 815 962-1244).



Tarp fastens to rod positioned above planter toolbar and can be rolled up or unrolled by turning a hand crank.

## Roll-Up Tarps For Row Crop Planters

The problem with most canvas-type planter box covers is that they're never there when you need them, says the manufacturer of a new roll-up tarp cover that mounts permanently on your planter.

"Individual box covers are usually stored in a pickup or seed truck. If a storm comes up suddenly during planting, they're never close by. Our roll-up tarp is always there and is much easier to use in a heavy wind," says Colby Canvas Co.

The tarp was invented by an Illinois corn farmer who worked out a deal with Colby to manufacture and market the "Weather Wrap" tarp.

The tarp mounts to a bar positioned above the toolbar. A roll tube slips through a pocket in the end of the tarp and a hand crank fits into the end of the roll tube to roll up or unroll the tarp. The weight of the roll tube keeps the tarp in place when it's unrolled.

The cover is made out of vinyl coated nylon and the hardware is painted steel. Comes complete with all mounting bolts



Cover is made out of vinyl coated nylon. A single cover can be used to cover as many as 6 rows at once.

and hardware. Make and model of planter are needed to determine price as well as row spacing of planter. A single cover can be used to cover as many as 6 rows at once. On larger planters, you use more than one cover.

It's designed for Deere, Kinze, White, and other planters with double or single box configuration.

Contact: FARM SHOW Followup, Colby Canvas Co., P.O. Box 793, Colby Kan. 67701 (ph 913 462-3981).

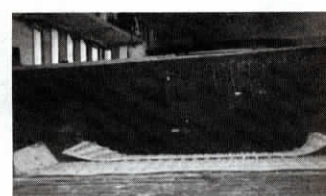
## Locked "Compartment" For Pickup Boxes

Here's a simple way to make a locking compartment on any pickup box that doubles as a wind deflector that boosts gas mileage.

Aubert Poirier, LaSalle, Manitoba, says his easy-to-make locking compartment lets him put purchases away out of sight when he's in town shopping and yet he can remove it in seconds when not needed. Best of all, the only cost is the price of a sheet of 3/8-in. plywood and a couple bolts.

He cuts out the sides of the plywood to fit around the wheel wells and under the upper lip of the pickup box. Then he cuts the sheet down the middle so it's in two equal size pieces. To install, he simply slips the two pieces into the box up against the wheel wells and under the edge of the box and then installs bolts between the two pieces to hold them in place. The plywood cover slopes upward to the back edge of the box so that when the tailgate is up and locked, the wedge-shaped compartment is completely sealed off.

"Takes only about 2 min. to put on or take off and really comes in handy when we're running errands in town. The best part is that it's not bolted to the box so you don't have to drill any holes or make any modifications. We also know that it saves fuel by deflecting air over the tailgate," says Poirier. He lays pieces of a rubber snowmobile



Lockable compartment made with plywood sheets doubles as wind deflector that boosts gas mileage.



Cover slopes upward to back edge of box when tailgate is up and locked to seal off wedge-shaped compartment.

track in the bottom of the compartment in case the floor of the box gets wet. He says the pieces of rubber track also work well to put under the wheels if you get stuck in snow.

Contact: FARM SHOW Followup, Albert Poirier, Box 163, LaSalle, Manitoba R0G 1B0 Canada (ph 204 736-4224).