

Center Divider Makes Bale Hauling Easier

A Missouri custom hay producer came up with a nifty way to haul round bales with an over-the-road semi trailer. He equipped it with a center divider so he can push bales up against the divider from either side when loading.

An 8-ft. high steel rail runs down the middle of the 53-ft. long, 8-ft. wide trailer. The trailer accommodates 34 5 1/2 by 6-ft. bales or 38 to 42 5-ft. bales. The floor slopes in toward the center so bales stay on/without tie-downs. Outrigger "cradles"

along the sides slide out and lock in place when hauling 6-ft. bales.

"The divider is sturdy enough to take the impact of bales hitting it hard. With front-end loaders working on both sides of the trailer we can load it in only 10 to 15 minutes," says Robert Garton, Moundville, Mo.

Contact: FARM SHOW Followup, Robert Garton, Rt. 1, Moundville, Mo. 64771 (ph 417 922-3265).

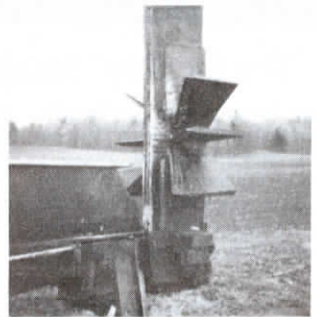


Giant Log Splitter Makes Up To 70 Cords A Day

"It really splits wood fast," says Gary Watt, Waterford, Ontario, about the giant log splitter he built that can split a chunk of wood into as many as 8 pieces in one stroke and make up to 70 cords of firewood a day.

The log is first cut with a chain saw into 16-in. lengths. Then the pieces are thrown by hand onto a conveyor that leads to the splitter. The machine has four hydraulic controls - one for the conveyor, one for the 6-in. dia. cylinder on the splitter, one that moves the splitting head up or down, and one that operates an elevator that delivers split logs into a truck.

"I built it because I felt there had to be a way to split wood without having to handle it so much," says Watt, who put the giant log splitter together 10 years ago. "The only time wood is handled manually is when you throw it on the conveyor. The splitting head is designed so you can split 2, 4, 6, or 8 ways, depending on how you position the blades. The machine is powered by a Perkins 100 hp diesel engine and has two hydraulic pumps. One 45 gpm pump operates the cylinder that splits the logs while a 33 gpm pump operates the conveyor and



elevator and raises the splitting head.

"With 5 people we can easily average 50 cords of wood a day. One person cuts and trims the tree, one person operates a log skidder, two people cut the log apart and throw the pieces onto the conveyor, and one person operates the splitter.

"I made the conveyor out of a stable cleaner gutter chain and welded lengths of angle iron onto it for paddles. The elevator is a belt type with angle iron paddles."

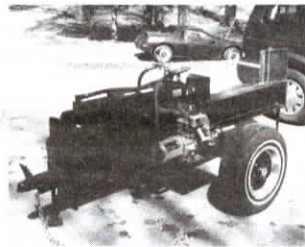
Contact: FARM SHOW Followup, Gary Watt, Rt. 3, Waterford, Ontario, Canada N0E 1Y0 (ph 519 426-5516).

Heavy-Duty Log Splitter

"After looking at several heavy-duty commercial log splitters, I decided to build my own," says Rick Clow, Princeton, Minn.

The splitter is powered by a 10 hp Tecumseh gas engine and equipped with a 2-stage hydraulic pump. It has a 30-in. stroke, 5-in. dia. cylinder mounted on top of an 8-in. wide, 10-in. high H-beam. The splitting wedge is 12 in. high. Clow equipped the splitter with 13-in. wheels and hubs from a junked car.

"I tried to incorporate the best features from other splitters," says Clow, who runs a machine shop. "I built it for a customer who got tired of using splitters that weren't built heavy enough. The beams would bend or the wedges would break. This splitter is built heavy but is lightweight and well balanced which makes it easy to hook up to a vehicle. There's a lift handle on the hitch end and a slide tube jack on each end. The engine and cylinder are mounted on the hitch end of the splitter, with the wedge on the other



end, so you can split a pile of wood and then simply drive away from it instead of having to move the pile.

"The table is built high so the operator doesn't have to bend over as far to operate it. The 10 hp engine doesn't even work up a sweat. If the wedge hits some tough wood, the 2-stage pump automatically kicks down."

Clow builds the splitter for sale for about \$1,800.

Contact: FARM SHOW Followup, Rick Clow, Box 145, Princeton, Minn. 55371 (ph 612 389-5284).

ATV Cattle Feeder

"I designed and built this two-wheeled portable cattle feeder to feed 8 to 10 feeder cattle. I pull it with an ATV," says Steven Garman, Scandia, Kan.

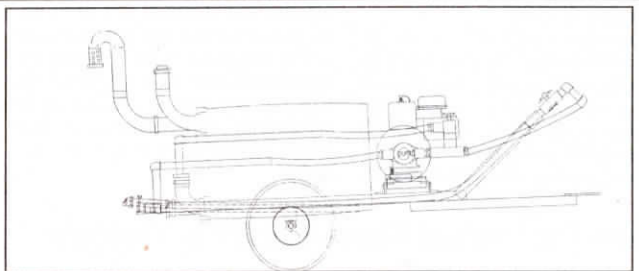
The 6-ft. long portable feeder has a 12-in. wide tub on each side for grain and a hay rack in the middle. The back side of each tub has a drain plug for easy clean-out. The tow hitch hinges up so it can be raised out of the way when unhooked. The front of the feeder rests on a pair of telescoping legs that lift out of the way for transport.

"It cost almost nothing to build," says Garman, who built the feeder entirely from scrap parts. "I cut a hot water heater in half to make the feed troughs and salvaged the rear axle and tires off an old riding mower. I used 3-in. sq. steel tubing to make the hitch and 3- and 4-in. pipes to



make the telescoping legs."

Garman is looking for a manufacturer. Contact: FARM SHOW Followup, Steven Garman, Rt. 1, Box 640, Scandia, Kan. 66966 (ph 913 374-4204).



"No Boom" Spray Rig

"There's nothing on the market like it. It gives you the accuracy of a \$25,000 self-propelled commercial spray rig," says John Mikulas, Troutville, Va., about his "Spray & Pump" sprayer that has an elevated spray nozzle on back that eliminates the need for a boom.

It'll spray 40 ft. wide with the single nozzle or you can set it to spray 20 ft. out to either side for hedge row control - without worrying about breaking a boom, notes Mikulas. You can also set the nozzle to spray higher for brush control. And it can be fitted with a hand sprayer. He pulls it with an ATV or lawn tractor.

"No commercial small tow rig offers the convenience of such a wide spray swath without the problems of clogged

nozzles and booms. It has recirculation agitation which is not available on new 12-volt commercial rigs. When not used for spraying, you can set it up for high pressure washing or for fire fighting. It's great for cleaning equipment because of the high volume of water it pumps and it also works great as portable fire control when burning brush. When we're not using it for anything else, it sits in a shed ready up with a hose and nozzle attached ready for fire fighting."

Mikulas has dimensioned drawings and parts lists available.

Contact: John Mikulas, 8836 Little Catawba Creek Rd., Troutville, Va. 24175 (ph 703 992-4758).