

## Semi-Mounted Big Bale Hauler

"Most truck-mounted big bale haulers mount permanently on the truck frame, limiting the truck to one use. Our new 'Hay Horse' is a fifth wheel deck that you can quickly disconnect, allowing you to use the semi tractor as a multipurpose vehicle the year around. You can even use it separately as a loader to stack bales," says R.L. Wilson, Wilson Mfg., Cherokee, Okla.

The innovative bale hauler mounts on the frame of a 1995 Ford F 800 2 1/2-ton semi-truck that's powered by a 250 hp diesel engine coupled with an Allison automatic transmission. The tandem axle trailer is designed to load in the field at speeds of 6 to 8 mph and can haul eight 4 by 8-ft. big square bales or seven 5-ft. round bales.

The hydraulically-powered unit consists of an up-front bale fork, an inclined platform that extends up over the cab, and an unloading rear platform. You spear a bale and set it on the platform over the cab while the truck is in motion. When you retract the bale fork, the bale slides by gravity to the back of the front deck. The entire process - from the time the front tines strike the bale until it's in place on the flatbed - takes only 12 seconds.

After the fourth bale is loaded onto the front deck, a hydraulic bale stop is lowered,



allowing the load to slide onto the rear deck. Then, you can load four more bales onto the front deck. Once all 8 bales are in place, the back deck raises up 90° to unload in a single 4-bale stack. Then the front 4 bales are allowed to slide onto the rear deck to unload. Round bales are simply unloaded in a horizontal line.

"The bale handling decks can be disconnected in only 30 to 45 minutes. When used alone, the tractor and front forks can be used to load bales into tub grinders or to load both sides of a semi trailer from one side. To use just the tractor and front lift, the rear bumper is outfitted with a pair of 48-in. spikes that hold a bale. It serves as a counterweight to stabilize the tractor during loading operations. The front lift has a maximum lift height of 16 ft. and capacity of 2,500 lbs.

"The lift and tilt functions of the front

## New Floating Pond Aerator

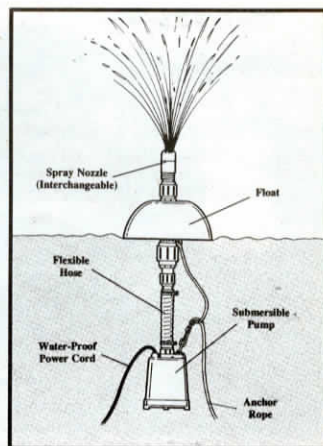
You'll like the price tag on a new floating pond aerator from Water Filtration Co. It's priced at \$529 and provides effective aeration and algae control for ponds up to 3/4 acre in size.

Powered by a 220 V electric motor, it pumps over 70 gallons per minute on only 3.3 amps. Requires minimum of 30 in. water depth.

The float itself is made of high density flotation foam sealed in a plastic shell.

The new aerator shoots a decorative 16-ft. high spray fountain and produces oxygen-rich water essential to the ecological balance of the pond or lake, and to the survival of fish and other pond life. In winter months it can help keep ponds ice free to help protect ducks, geese and other wildlife from predators, the manufacturer points out.

A smaller floating aerator pumps 44 gpm, shoots a 12 ft. high spray fountain and provides effective aeration and algae control



for up to 1/2 acre ponds. It operates on 110 V and sells for \$335.

Contact: FARM SHOW Followup, Water Filtration Co., 1205 Gilman St., Marietta, Ohio 45750 (ph 614 373-6953, or 1 800 733-6953).

Sells for \$85,000.

Contact: FARM SHOW Followup, Wilson Mfg., Inc., 312 W. 5th, Cherokee, Okla. 73728 (ph 800 259-1281 or 405 596-3381).

lift are operated by a joystick in the cab. Four toggle switches run various functions of the trailer. When traveling on the highway, the front deck can be lowered to legal height."

## "Made It Myself" Ideas For Sheep Producers

Our thanks to Dave Thompson, editor and publisher of sheep! Magazine for his help in pulling together this roundup of "made it myself" ideas from sheep producers. sheep! is published monthly. A one-year subscription is \$19.00. For a free sample issue, write: FARM SHOW Followup, sheep! Magazine, P.O. Box 10, Lake Mills, Wis. 53551



### Low-Cost Round Bale Feeder

"I used the sides of an old farrowing crate and a pair of 8-ft. fence panels to make this low-cost round bale feeder. The crate sides slide freely along the side panels so there's nothing to adjust and little feed is wasted. Because the sides yield to pressure from the sheep they're less likely to break the feeder."

"Used crates sell for \$8 to \$12 apiece. Fence panels sell for about \$30 new and the miscellaneous fittings needed are about \$10. Total cost was about \$70 compared to \$175 to \$250 for a new commercial metal round bale feeder." **Tim, Beth, and Jim Miller, Tailwind Farm, Beloit, Wis.**

### Trash Can Feed Cart

"I designed this 'trash can' feed cart so I can distribute ground/chopped hay to various feeding locations without having to carry it by hand. It uses a standard 36-gal. metal trash can that holds about 50 lbs. of hay or can be loaded with feed. I can also carry small square bales across the handles.

"The cart is built from 14-ga., 1-in. sq. steel tubing so it's lightweight. A single pneumatic 2-ply tire makes it easy to maneuver even through a lot of bedding. The cart is only 26 in. wide so it can easily fit through a standard door or gate. The 26-in. high handle gives the cart good balance and leverage which adds to its mobility." **Tom Drudik, Grand Island, Neb.**

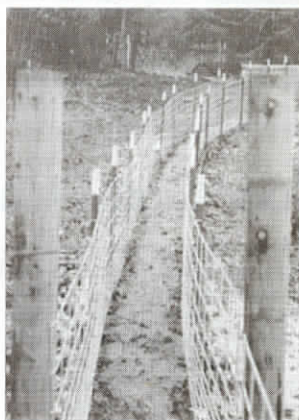


### Sheep "Sidewalk" Solves Mud Problems

I raise sheep in the Willamette Valley where mud-encrusted udders and footrot are constant problems. I solved the problems by building a slightly raised, 24-in. wide, 200-ft. long concrete sidewalk. It provides a path out of the mud on a hill between my barn and pasture. I 'roughed up' the concrete to improve the traction up and down the hill, allowing the sheep to wear the mud off their hooves as they walk.

The sidewalk runs alongside the barn and allows the sheep to enter it at two locations. To build the sidewalk I spaced heavy duty, 5-ft. long T-posts 4 1/2 ft. apart, staggering them 18 in. When I poured the concrete I made sure the posts were plumb and that concrete flowed around them to make them secure. In a flat spot just outside the barn a 'cut out' was fashioned for a footbath.

The sidewalk's narrow 24-in. width keeps sheep from turning around. The ewes and even the lambs have quickly learned to walk single file on the sidewalk. This



will be the first winter that the sheep will use the sidewalk, but already they're arriving at the barn much cleaner. **Chuck Thompson, Sweet Home, Oregon**



### Sled Gets Sheep In Shape For Shows

"You can improve the muscles on your show lambs and keep kids interested in the lambs at the same time by building this sheep sled. All it takes is an old horse halter, a water sled, and a rope to attach the halter to the sled.

"Attach the sled to the halter at the cheek rings. Slip the lamb into the halter with neck through nose piece and ear strap under belly. Add a small feed bucket and your kids are ready to have fun." **Bambi Hay, Dadeville, Ala.**