

Gate consists of an apron mounted inside a steel frame and held 4 in. above the ground. As soon as the vehicle's rear wheels leave the gate, springs pop the apron back up.

RESTS ON DRY GROUND; ELIMINATES NEED FOR PIT

Portable "Pop-Up" Gate

No pit is needed for this new portable cattle gate that pops back up after you drive over it, according to Gordon Brown, Main Line Marketing, Inc., Senlac, Sask.

The "Texas Gate" consists of an apron mounted inside a steel framework and held 4 in. above the ground. The apron is made up of 1 1/2 by 2-in. wide rectangular tubing spaced 4 in. apart. A pair of suspension springs on each end of the apron mount on 4-ft. high steel posts. When a vehicle drives over, the wheels simply press the apron to the ground. As soon as the vehicle's rear wheels leave the gate, the springs pop the apron back up.

The gate can be equipped with optional wheels and hitch. "You can take it anywhere because it rests on dry ground and is raised up 4 in. so it always stays relatively

clean. No pit is needed so there's no problem using it on frozen or sandy ground," says Gordon Brown, representative, noting that the tubing used on the gate won't bend even under the heaviest trucks. You can drive over the gate at 30 to 40 mph. Height is adjusted by shortening or lengthening the chains. The springs allow enough rocking motion so that cows can't hold the gate down with their weight. Installation takes only about an hour."

Available in 4, 12, and 16-ft. lengths. A 12-ft. heavy duty model sells for \$850 (Canadian). The optional wheels sell for \$400.

For more information, contact: FARM SHOW Followup, Main Line Marketing, Inc., Box 88, Senlac, Sask., Canada S0L 2Y0 (ph 306 228-2500 or 306 228-3140).

TAKES PRESSURE OFF FOUNTAIN AUGER

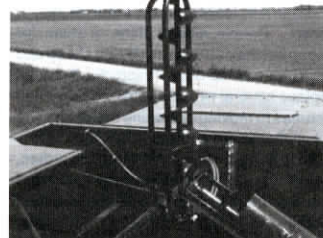
"Bubble-Up" Auger Fills Hopper Extensions

If you've got an extension to boost capacity of your combine clean grain hopper, you'll like this new "Bubble-Up" auger that lifts grain up to fill the extension, taking the pressure off the fountain auger.

Manufactured by Arv Burvee, Fairmount, N. Dak., the 30 in. long, 7 1/2 in. dia. auger attaches to a bar that's mounted across the top of the hopper. By loosening two set screws the auger quickly folds down for storage or slides back and forth on the mounting bar to reposition the peak of the grain.

Burvee came up with the Bubble-Up auger to use with his "Hopper Topper" grain tank extension that boosts capacity by 45 to 105 bu., depending on the combine. "I'm a farmer myself and I designed the auger so I'd buy it myself. It takes the pressure off the combine cross auger or fountain auger when filling extended grain tanks. Lets you fill extensions more completely and evenly and allows you to put the peak of the grain exactly where you want it," says Burvee.

No modification of combine is required to install the mini-auger, which is hydraulically driven by an orbit motor that mounts on the bottom end of the auger. The motor is connected in series to the hydraulic pump that drives the combine reel. The speed of the Bubble-Up auger is controlled by its own flow control valve, and doesn't interfere with the control or speed of the reel. It can also be connected to the combine's main hydraulic system. The auger drive has its own built-in kick-down pressure relief

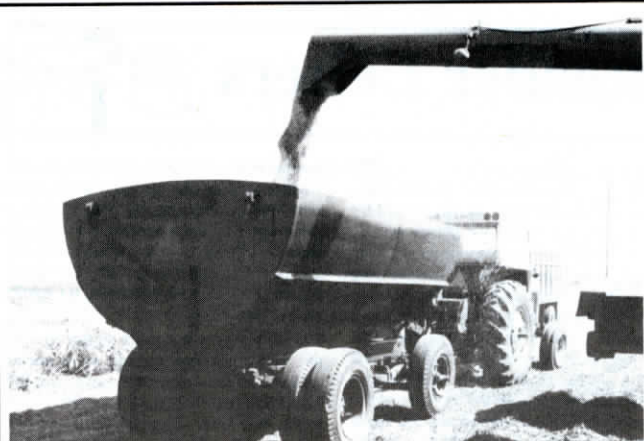


The 30-in. long auger attaches to a bar that's mounted across top of the hopper.

safety valve that stops flow of oil to the auger if the auger flighting becomes entangled for any reason. Mounting brackets simply attach to either side of the grain tank to hold the 2 3/8-in. dia. cross pipe that supports the Bubble-Up auger.

"It's heavily constructed and runs totally vibration-free. Works great with any hopper extender," says Burvee, noting that his "Hopper Topper" extender is made out of 22-oz. vinyl-coated nylon canvas mounted on a steel tube frame that folds up or down in less than a minute. When folded it raises the height of the combine less than 3 in. It's available in colors to match any combine. Price varies depending on size. It's been on the market since 1983.

For more information, contact: Arv Burvee, Burvee Farm Shop, Rt. 1, Box 406, Fairmount, N. Dak. 58030 (ph 701 474-5853).



Buesinger built the 325-bu. wagon out of an 8,000-gal. diesel storage tank.

"Self-Centering" Dump Wagon Built From Old Fuel Tank

"I wanted a dump wagon that would center its own loads and that could handle loads of rock and limestone as well as grain," says Henry Buesinger, Taylorville, Ill., who built a 325-bu. wagon out of an 8,000-gal. diesel storage tank.

He cut the 8-ft. dia. tank in half and mounted it on a chassis salvaged from a 1700 IH Loadstar truck and shortened up about 3 1/2 ft. The 8-ft. width is the legal limit on roads in most states.

"What I like most about the round cargo bed is that all loads, whether grain, rock or

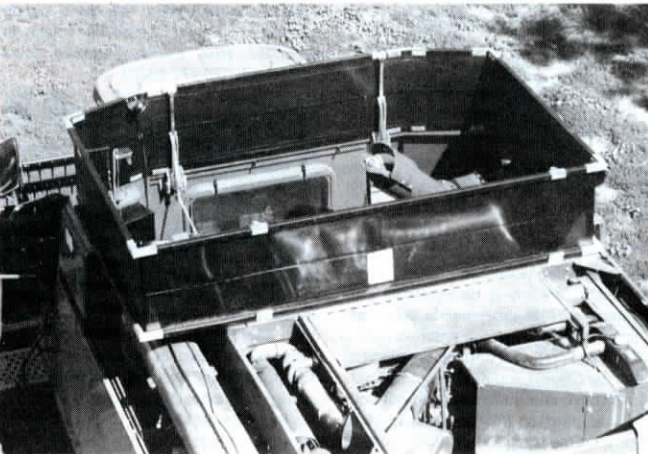
limestone, tend to seep to the center so it trails well. Also, when dumping, nothing ever hangs up," says Buesinger.

He uses an 18-ton Low Boy hoist to dump the wagon, which rides on 20-in. wheels fitted with 10-ply tires. The tank is made out of heavy 1/4-in. thick steel. He made a swinging dump gate for the rear that's also fitted with a small slide gate for grain. Total cost was just \$2,500.

Contact: FARM SHOW Followup, Henry Buesinger, Taylorville, Ill. 62568 (ph 217 824-5320).



An 18-ton Low Boy hoist is used to dump wagon which rides on 20-in. wheels.



Burvee came up with the auger to use with his "Hopper Topper" grain tank extension.