

New Snow Thrower For 4-Wheel ATVs

Thanks to a new snow thrower for 4-wheelers, you can put your ATV to use this winter to clear out sidewalks and driveways around the farm.

"Our new 'Snow Tiger' lets you take advantage of your 4-wheeler's good traction," says George Yacevich of Cambridge Metals and Plastics, Cambridge, Minn., the manufacturer.

The snow thrower is powered by a 10 hp. 4-cycle Tecumseh engine with 120 volt electric start. It's equipped with a 32-in. long, 15-in. dia. auger and adjustable scraper blade and skids.

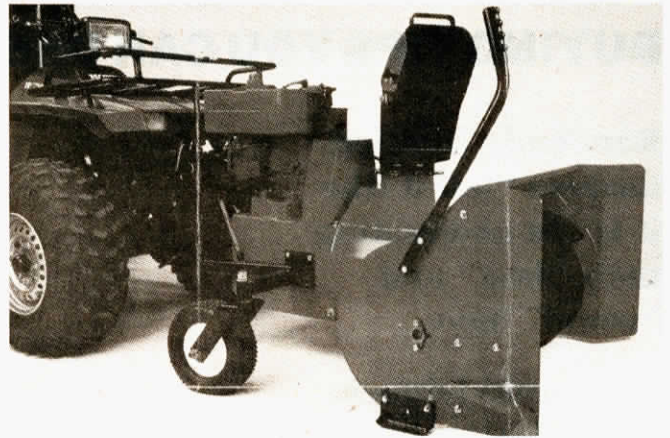
To install, you bolt a mounting plate to the ATV, then attach the

snow thrower with 3 removable pins.

For safe operation, the snow thrower has a footpeg/brake that must be engaged for the auger to run. Take your foot off the peg and the machine automatically stops. The snow thrower's adjustable snow chute is controlled from the drivers' seat.

Snow Tiger fits on 250 cc and larger 4-wheelers. Sells for \$1,250, including mounting kit.

For more information, contact: FARM SHOW Followup, Cambridge Metals & Plastics, 200 S. Cleveland, Cambridge, Minn. 55008 (ph 612 689-4800).



Snow thrower, complete with its own 10-hp engine, mounts ahead of 250 cc. and larger 4-wheel ATV's.

Big Bale Cutting Machine Feeds Out Into Bunks

"It's a great way to cut and feed round bales," says Jack Hudon, sales manager for Dynavent, Canadian importer of the French "Silonet" cutting and feeding machine for silage and big round bales.

The 3-pt. mounted machine features a hydraulically lifted rear gate outfitted with a cutting blade that's got two horizontal reciprocating knives that slice down through big bales or silage in bunks, pulling material into the feedout hopper. A 16-in. wide shredder on one side of the machine feeds the material out the side into feedbunks or onto the ground.

"It makes an exceptionally clean cut on all types of silage, long or short, wet or dry. Cuts clean enough to minimize spoilage in a stack or bunk silo. Because the blade closes firmly onto the hopper, no silage is lost during transport. It'll carry up to 1,500 lbs. at once," says Hudon.

A key advantage of the clean-cutting reciprocating knives is that they don't loosen silage as they cut, which would cause loss due to mold, bad weather, and birds. With round bales of hay or straw, you simply back up to the bale and start cutting. No need to remove strings. The side-discharge shredder slices as it feeds



Cutter knife along lower edge of rear lift gate cuts through big bale, or silage, and pulls material into hopper. Feeds out the side into bunks or onto ground.

material out.

Retail price of the new cutter is \$8,000 (Canadian).

For more information, contact:

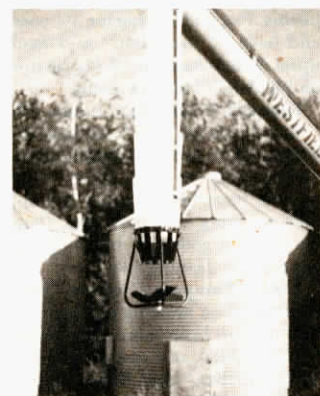
FARM SHOW Followup, Dynavent Farm Equipment Inc., 1825 Power, Drummondville, Quebec, Canada J2C 5X4 (ph 819 478-4226).

"Spout Spinner" Throws Grain To Outside Of Bin

"Helps grain cool more rapidly and dry down faster," says George E. Bourgault, Assie Industries Ltd., inventor of the new Spout Spinner Spreader, an add-on "propeller" attachment for bin-filling augers.

"It prevents the concentration of fines. Ordinarily fines, which consist of weed seeds, immature seeds and other loose particles, are concentrated in the center of the bin where they can trigger a hot spot. Chaff concentrates towards the outside of the bin, which insulates the bin to retard cooling and curing of grain. Because of these uneven patterns of distribution, flow of drying air through the bin is uneven.

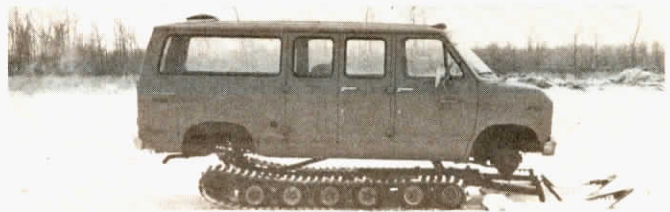
"The Spout Spinner Spreader rotates rapidly when grain hits it. Grain is deflected to the outside, filling the bin in a doughnut shape with a hole at the center. This method dispenses fines evenly and causes chaff to accumulate in the center. With chaff towards the center, rather than insulating sidewalls, cooling and cur-



Spout Spinner rotates rapidly as grain, exiting auger, strikes it.

ing of the grain is speeded up."

For more information, contact: FARM SHOW Followup, Assie Industries Ltd., P.O. Box 400, St. Brieux, Sask. S0K 3V0 Canada (ph 306 275-2175).



Once converted, snow van is comparable in quality to special-built vehicles that cost \$40,000 or more.

Add-On Snow Tracks For Pickups, Vans

You can drive your pickup or passenger van over any ground a snowmobile can cover with a new conversion track kit manufactured by Sno Buster, Baudette, Minn.

It takes about 4 hrs. to install the 10-ft. long tracks which run about 3/4 of the length of the truck. Tracks consist of rubber belts fitted with steel cleats, 2 ft., 4 in. wide. All wheels are removed and skis fastened to front hubs provide steering. Tracks are driven directly off the driveshaft.

A converted "Sno Buster" truck will travel at speeds up to 45 mph over snow. A minimum of a 350 cu. in. engine is recommended. Con-

verted truck will turn in a 25-ft. radius. Kit weighs 2,000 lbs.

The conversion kit was originally built and tested for rescue and patrol work on Lake Winnipeg in Canada. A converted van is comparable to vehicles built from the ground up that cost \$40,000. A conversion kit to fit any van or pickup sells for \$7,995 and can be removed during off months to convert back to over-the-road travel.

For more information, contact: FARM SHOW Followup, Sno Buster Trac Conversion, Rt. 1, Box 165B, Baudette, Minn. 56623 (ph 218 634-1150 or 218 634-1151).