

Built-in hydraulic cylinder operates top claw.

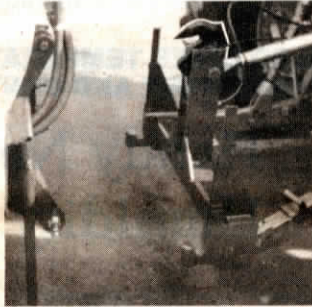
HYDRAULIC TOP LINK CLAW PROVIDES POWERED HOOK-UPS

New Grapple Hitch

The idea for Glen Watts' new Grapple Hitch came from his farmer-customers who were tired of trying to release implements hung up in 3-pt. tractor quick-hitches. His solution was to install an upside down powered top claw that provides positive un-hookings.

"Farmers told me that they were spending too long trying to get unhooked from 3-pt. implements. This hook slides down over the implement hitch rather than up under so you can use the weight of the equipment to unhook," explains Watts.

The hitch has a built-in hydraulic cylinder which operates the top claw. There are two hand-operated safety catches on either side of the hitch. To unhook, you simply release the safety catches and retract the claw. Watts builds hitches to fit both Cat. II and III 3-pts. and it'll handle any equipment that'll work with a standard quick hitch.



Top claw hook slides down over implement hitch.

Watts would like to find a manufacturer. Meanwhile, he plans to go into production on his own.

For more information, contact: FARM SHOW Followup, Glen Watts, Tillage Development Inc., 16600 S.W. Christensen Rd., McMinnville, Ore. 97128 (ph 503 835-5893).

SELF-CONTAINED SEMI TRAILER CARRIES 12 COMPLETE INDIVIDUAL APARTMENTS

Moveable Motel Provides Work Crew Housing

Combine crews and other work crews that travel from place to place will be interested in the new "Venture Inn", a self-contained moveable motel on wheels that contains 12 complete 1-person apartments on a 45-ft. semitrailer.

Each slide-out apartment has a twin bed, shower, flush toilet, and sink plus a wardrobe and shelf storage area. Each unit contains a fire extinguisher and smoke alarm. Heat and air conditioning is provided from a central propane-electric power system located on the gooseneck of the trailer. Fresh water is stored in a 200-gal. reservoir and sewage is carried in a 1,100 gal. tank located between the main I-beams of the trailer.

Each telescoping unit slides over

itself for highway travel so that the trailer meets over-the-road width restrictions. Two men can set it up for sleeping in less than 1/2 hour. The unit is completely self-contained, requiring no outside hookup.

Each module is insulated with fiberglass and has three windows and retractable stairs that lead to its private entrance.

Custom-built 12-unit Venture Inns sell for under \$100,000. A ready-made "6-Pack" model sells for \$39,900.

For more information contact: FARM SHOW Followup, Venture Ridge Mfg., Inc., Rt. 8, Box 111-C, Hwy. 14, Greer, S.D. 29651 (ph 803 877-3328).



Front 60 in. wide plate scoops rocks out of the field.

WHEN MACHINE IS RAISED, DIRT FALLS THROUGH

Self-Dump Rock Picker

"I got the idea when I leased rock pickers on my own farm. They all needed improving," says Frances Effling, Artesian, S. Dak. He's designed and now manufactures a simple "pick and dump" picker that requires practically no maintenance.

"It has a pickup plate rather than teeth, which could break or bend. It's worked well on both tilled ground and pastures. A single double-acting 3 1/2 by 20-in. cylinder lowers it down to picking position and lifts it up for dumping. It has an extra long offset hitch for tractors with cabs to improve the visibility and the hitch swings over for road travel. Heavy-duty spindles and hubs provide long-lasting durability," says Effling.

The front 60-in. wide pickup plate scoops rocks out of the field. When the unit is raised, dirt falls through and rocks roll to the back. Grate spacing is 2 1/2 in. but can be special ordered to a wider or narrower width to adapt to local conditions.

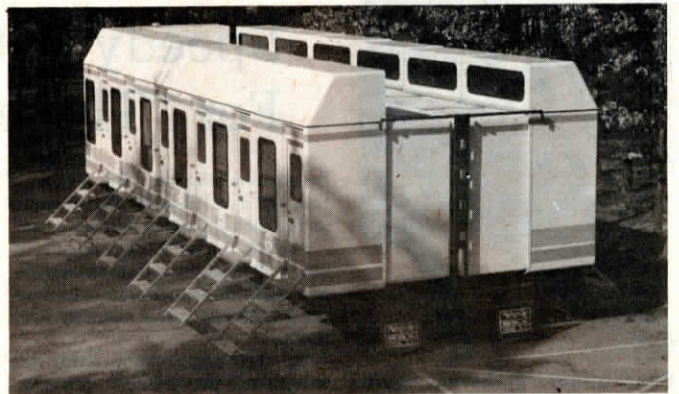
"People have tried to build similar rigs in the past but they weren't as big, they weren't as cheap, and they



Dirt falls through 2.5 in. grate spacings as picker is raised into dump position.

required more maintenance," says Effling, who sells his Dakota Rock Picker for \$1,800.

For more information, contact: FARM SHOW Followup, Effling Design and Fabrication, Box 103, Artesian, S. Dak. 57314 (ph 605 527-2250).



Smooth fiberglass construction inside and out makes walls easy to clean.