



The 40 cu. ft. hopper weighs 420 lbs. and holds up to 1,200 lbs. of feed.

IT'S A CROSS BETWEEN A FEED CART AND FEED WAGON

“Power Feeder” For Skid Steer Loaders

First-of-its-kind “skid feeder” mounts on your skid steer loader to turn it into a feed cart for efficient bunk or alley feeding.

The 5-ft. wide, 5-ft. long, 3-ft. high V-shaped hopper is equipped with a chain-drive tine agitator and a 10-in. dia. hydraulic-driven auger that discharges feed from the bottom of the hopper. Overall outside width is 6 ft. 4 in.

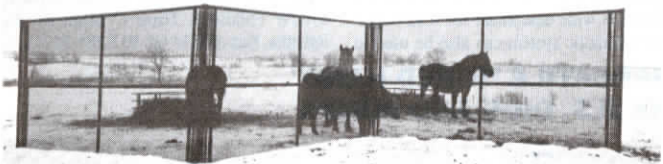
“It’s designed to transport feed, not mix it, so it won’t take the place of a mixer wagon,” says Jeff Roberts, inventor. “It works great for feeding in tight spots both inside and outside, and for transferring total mixed rations to locations not served by

automatic equipment. Some farmers use it to feed silage. The hopper can be raised 4 ft. for feeding into bunks.”

The 40 cu. ft. hopper weighs 420 lbs. and holds up to 1,200 lbs. of feed. Unloading time is 3 minutes. The hydraulic motor requires 7 gpm. An auxiliary hydraulic control valve is optional. Optional quick attachment plates are available for most skid steer loader models.

Sells For \$2,488.

For more information, contact: FARM SHOW Followup, Harvest Tec, Box 63, Hudson, Wis. 54016 (ph 715 386-9100).



Lightweight 8-ft. panels are 10 to 16 ft. long and can be linked together end-to-end.

STANDS UP TO WINDS AS HIGH AS 100 MPH

Portable Windbreak Protects Livestock

“We’ve been using these portable windbreak panels for three years to protect cattle and horses,” says Jeff England, Bloomfield, Iowa, who farms and manufactures the windbreak panels which can also be used for shade in summer.

The tubular steel and wire-framed panels are covered with a plastic fabric, made by Tensar Corp., that comes with a 10-year guarantee. It reduces wind velocity by up to 50 percent and will withstand winds up to

100 mph when properly installed. When used as shade protection, the panels reduce temperature by about 15°.

The 8-ft. high panels measure 10 to 16 ft. long and can be linked together end to end. They sell for \$1.25 per lineal ft. England will also build to order.

For more information, contact: FARM SHOW Followup, Jeff England, Rt. 3, Highway 63 N., Bloomfield, Iowa 52537 (ph 515 664-3364)

DIRECTS CHOPPED STRAW INTO STUBBLE

“Straw Saver” Makes Easy-To-Bale Windrows

You won’t have to worry about high winds wrecking straw swaths during or after combining if you mount this new “straw saver” on your combine. It directs chopped straw straight down into the stubble, keeping wind from blowing it away.

“We had trouble with high winds blowing away flax, rye, wheat and other small grain swaths which we wanted to bale for bedding. Most farmers prefer to chop the straw as fine as possible because it makes better bedding and causes less problems with manure handling equipment, but it’s also harder to get into a good windrow for baling. This add-on unit totally solves the problem,” says Norman Chouinard, of Lorette, Manitoba, who’s already got a number of his “straw savers” out on farms. “Everyone who’s tried it tells me it’s worth its weight in gold.”

Installs in about 20 min. After the initial installation, it takes just 5 min. to remove or to reinstall so you can quickly switch from making a tight windrow to spreading the straw.

“It makes a tight windrow that’ll withstand winds up to 45 mph. Lets you adjust combine to chop fine to eliminate problems with manure handling equipment,” says Chouinard, noting that the tight windrows are also easier to burn off.

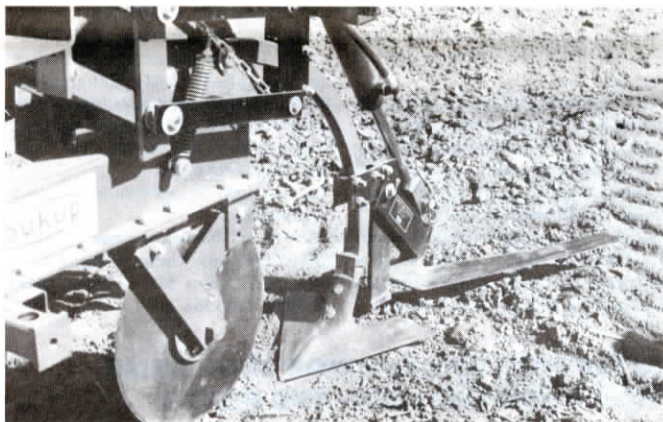


Add-on straw attachment makes a tight windrow that’ll stand up to 45 mph winds.

Raymond Phillipot is a dairy farmer near St. Claude, Manitoba, who bought one of Chouinard’s first straw savers. “Before I used it long straw used to give me all kinds of problems, causing manure to bridge. Now I can adjust my combine to chop straw fine and blow it into swaths that are easy to bale.”

Sells for \$119.95 (Canadian) and adjusts to fit most combines.

For more information, contact: FARM SHOW Followup, Norman Chouinard, Nor-AI Marketing, Box 490, Lorette, Manitoba R0A 0Y0 Canada (ph 204 878-2432 eves).



Extra sweep mounts behind existing shovel. Retracts hydraulically when not needed.

HYDRAULICALLY CONTROLLED FROM THE TRACTOR SEAT

“Guess Row” Weeder For Row Crop Cultivators

Regular cultivator sweeps don’t reach out far enough to nail weeds in “guess rows”. To solve the problem, Paul Schaffert Sales has introduced the “Xtra Sweep.” Its extra-long blade (20 to 28 in.) is hydraulically operated (via a 2 by 8 in. cylinder) from the tractor seat. The operator hits a hydraulic lever to activate the Xtra Sweep, one on each end of the cultivator. After passing through the “guess row” area, the operator hits the lever to quickly return the blade to a resting, non-operating position. Depth and pitch of the sweep is easily adjusted.

Schaffert furnishes a mounting bracket

and clamps. You furnish the cylinder and make up your own blade by welding a long (from 20 to 28 in.) extension onto a cultivator sweep. Works on conventional or ridge till row crop cultivators, and isn’t bothered by heavy trash, says Schaffert.

Sells for \$85 per unit (including the mounting bracket and clamps, but not the cylinder or sweep).

For more information, contact: FARM SHOW Followup, Paul Schaffert Sales, Rt. 1, Box 157, Indianola, Neb. 69034 (ph 308 364-2607).