

“Electronic Brain” Tells You When Fence Stops Working

“It’s the first 24 hr. a day, year round fence monitor of its kind,” says Michael Rose, manufacturer of the new “Perimeter Patrol” fence monitor that lets you know at a glance whether a fence line is fully charged.

The small 4 by 3-in. box simply mounts on a fence post. One lead clips to the fence wire and the other goes in the ground. When the fence is fully charged, an easily visible red light shines brightly. If power goes off, or drops at all, the light goes off or fades, depending on how you’ve got it set. For example, you can set the monitor to come on if power drops 10 percent below full power.

“Conventional fence testers only tell you if a fence is working at a particular moment in time. This stays attached and will tell you at any time if it’s working,” notes Rose.

Works on any length of fence and doesn’t not “load” fence itself. Sells for \$19.95 plus \$3.95 S&H.



Contact: FARM SHOW Followup, Rose Electronics, 630 Coleman Lane, Bowling Green, Kent. 42103 (ph 502 781-9068).

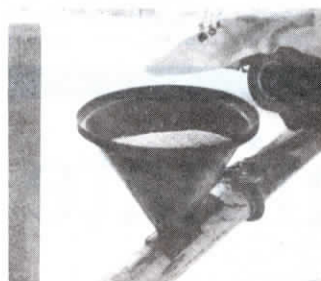
Auger-Mounted “Grain Saver” Funnel

You can add feed supplements or seed treatments to grain as you auger it out of bins with this new “grain saver” funnel that bolts onto any auger, says Robert Rollinson, Blackfalds, Alberta.

The funnel slides easily onto mounting brackets that bolt onto the auger tubing, so one funnel can be used on more than one auger. A sliding door at bottom controls flow rate into auger.

“It saves time by allowing you to add feed supplements or seed treatments to grain as it comes out of the bin instead of in a separate process,” says Rollinson. “It can also be used to clean out grain from the bottom of the bin. Just shovel grain into the funnel. It can also be used to empty auger hoppers rather than dump grain back into a truck.”

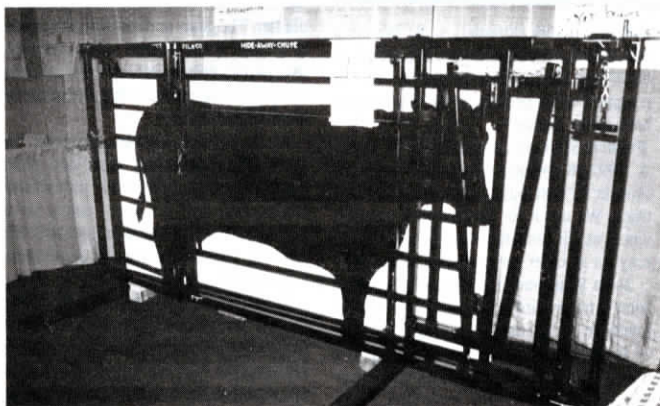
To install, you cut one small hole in the



auger and install two bolts.

Sells for \$78 (plus S&H).

Contact: FARM SHOW Followup, The Grain Saver Funnel, Box 623, Blackfalds, Alberta, Canada T0M 0J0 (ph 403 885-2961).



“Fold-Flat” Cattle Chute

“It’s a great space saver,” says Dennis Fisher, Sisseton, S. Dak., about his 30-in. wide, 7-ft. long livestock chute that can be collapsed and folded out of the way along the inside wall of any livestock trailer. It can also be used in alleys, calving rooms, sick pens, etc.

The chute is equipped with gates on the rear and one side and a headgate in front. It folds up flat - just 6 in. wide and 10 ft. long against any solid wall.

“It’s especially handy for work in remote pastures because it lets you work on animals right in your trailer,” says Fisher. “The chute and trailer can be used together as a pen, making it easy to restrain livestock to

perform a variety of veterinary tasks. It also works great for transporting baby calves because you can keep the calf in the chute and the mother inside the trailer. It can be used in dairies for artificial insemination and general doctoring. It also works great for people who show livestock at stock shows. Most of the grooming and prep work on the show animal can be done right in your trailer.”

Chute is reversible for left or right-hand mounting. He’s looking for manufacturer.

Contact: FARM SHOW Followup, Dennis Fisher, Rt. 3, Box 115, Sisseton, S. Dak. 57262 (ph 605 698-7492).

E-Z Eye Grain Bin Level Indicator

You can see at a glance when a bin fills up with the new E-Z Eye level indicator that changes from dark to bright orange when grain reaches its level.

The E-Z Eye installs in any bin by simply drilling a 11/16-in. hole. It’s dark green in color when there’s no pressure against the indicator’s pressure plate. But as soon as grain fills up and presses against the pressure plate, the dark fluid contained in the unit drains out of the outside indicator to an internal reservoir and the E-Z Eye appears as a bright orange that’s easily seen from the ground. When the bin empties out again, the indicator fills back up with fluid. The fluid doesn’t freeze up in winter.



Contact: FARM SHOW Followup, D&S Inc., Box 1553, Fargo, N. Dak. 58107 (ph 701 235-7497).

Front-Mount Big Bale Wrapper

New front-mount bale wrapper eliminates the need for a second tractor to handle bales and gives the operator a clearer view of the job, according to the manufacturer, Opico Ltd. of Bourne, England.

It fits front-end loaders with minimum lift capacity of 2,500 lbs. and will handle bales up to 2,000 lbs. Bales are picked up by tilting the wrapper so the roller table is flat across the back of the bale. A grab arm squeezes the bale and then the roller table drops down so it’s under the bale. Plastic comes off a roller on an arm that rotates around the bale. Plastic is started and also cut automatically so the operator never has to get off the tractor. As the arm rotates around the bale, the bale is rotated by the roller table.

The hydraulically-driven wrapper is



controlled electrically from the cab.

Sells for about \$8,000.

Contact: FARM SHOW Followup, Opico Ltd., South Rd., Bourne, Lincolnshire PE10 9LG England (ph 0778 421111). (Farmer’s Weekly)

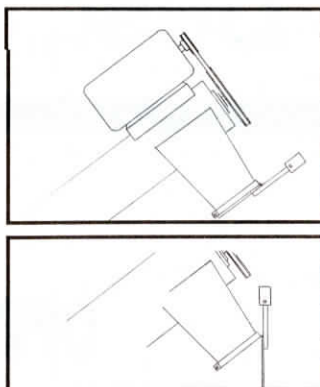
Automatic Auger Cover

“You just put it on and forget about it. Keeps birds out,” says the manufacturer of this new swinging auger cover that automatically covers auger spouts when not in use.

It’s fitted with adjustable counterbalanced weights that allow the cover to open easily when grain flows and then shuts the cover once grain flow ends.

The cover simply clamps onto any auger spout with at least a 1-in. wide lip. Standard sizes are 6, 8 and 10-in. dia. Custom sizes can be made to order. The 6-in. model sells for \$24.

Contact: FARM SHOW Followup, Monte L. Stum, Rad-Fab Inc., 78288 Highway 96, Towner, Colo. 81071 (ph 719 727-4661).



Rear-Mount Loader For Smaller Tractors

This 3-pt. loader is designed for tractors from 25 to 75 hp. It provides better traction and is more maneuverable in confined areas than a front-end loader, says Mainline of North America, London, Ohio.

The Howard rear loader can handle up to 1,700 lbs. Minimum lift height is 6 ft. 6 in. - enough to lift big loads into spreaders and wagons. The bucket is manually tripped. The weight of the loader is on the tractor’s rear wheels for improved traction on wet, slippery surfaces. When fully raised, the loader leaves the drawbar open to allow a spreader, wagon, or trailer to be pulled behind the tractor.

Sells for \$1,325.

Contact: FARM SHOW Followup, Mainline of North America, Box 526, Jct. U.S. 40 & St. Rt. 38, London, Ohio 43140 (ph 614 852-9733).

