



Hinge kit lets you fold straw chopper down out of way when not needed or swing it back up for use. Spring latch holds it in place until you can install mounting bolts.

**MAKES MOUNTING CHOPPER A ONE-MAN JOB**

## Hinge Kit For Deere Combine Straw Choppers

New hinge kit for Deere combine straw choppers stores chopper on combine and lets one man mount it when needed by simply swinging it up into place.

Ron Waldner, De Smet, S. Dak., built a few prototypes last year and sold them to local farmers. They worked so well, he's now ready to sell them nationwide. The "Chopper Caddy" kit fits Deere machines 2 years old or older (latest new 9600 combines don't have the problem).

"Everyone who's bought a kit is thrilled to have it because mounting Deere straw choppers is hard work. It takes two or three guys and you can hurt your back. My hinge kit lets makes it easy to fold it down out of the way for storage when you don't need it. To

hook it up again, you just swing it up and a spring latch holds it in place until you can install mounting bolts," says Waldner, noting that one added benefit of the kit is that the added weight on the rear of the combine when the chopper is not in use makes the combine handle better.

Hinge, painted Deere green, is made of 3/8-in. thick steel with a 3/4-in. hinge bolt. Kit installs with a 3/8-in. drill. No welding required. One size fits all. So far he's fitted it to 6620, 7720 and 8820 combines.

Sells for \$159.

For more information, contact: FARM SHOW Followup, Ron Waldner, Yankee Mfg., 705 2nd St. S.W., De Smet, S. Dak. 57231 (ph 605 854-3025).



Without leaving driver's seat, operator can adjust hitch "on the go" (via a hydraulic cylinder) so two rakes lay down either one combined windrow or two windrows.

**CUTS RAKING TIME IN HALF**

## New Dual Hitch For Side Delivery Rakes

You can cut raking time in half with the new Dual Tracker hitch from Tri-L Mfg., Ozark, Mo., that lets you pull two side delivery "basket" rakes simultaneously.

Without leaving the driver's seat, the operator can control the hitch "on the go" (via a 2 by 18 in. hydraulic cylinder) so the two rakes lay down one combined windrow, or two windrows. Positioning the rakes to track in alignment for going through gates, or down the road, is also done right from the tractor seat.

The Dual Tracker accommodates most makes of 8.5 or 9.5 ft. side delivery "basket" rakes with or without dolly wheels. The two rakes can be different makes, and both can

left hand, or a right hand teamed with a left hand.

The bridge hitch is made of 4 in. square tubing (5/8 in. thick) and measures 18 ft. long from front to back. The hitch's rear axle, made of 4 in. square tubing 3/16 in. thick, is offset 6 in. in the middle to allow for greater than 90° turns. Wheels on the hitch are positioned so they don't drive over the windrow laid down by the leading rake.

Sells for \$1,895, including the 2 by 18 in. cylinder and two 15 in. wheels, less tubes and tires.

For more information, contact: FARM SHOW Followup, Tri-L Mfg., Rt. 2, Box 57, Ozark, MO. 65721 (ph 417 485-6820).



Remote auger "shut-off" lets you finish leveling off your truck without having to climb down to shut off augers.

**REMOTE RECEIVER LETS YOU SHUT OFF BIN UNLOADING AUGER FROM YOUR TRUCK**

## Remote Control Auger "Shut-Off"

A Minnesota inventor has designed a new remote control auger "shut-off" that lets you shut off up to three grain augers at a time by pushing a single button on a hand-held remote transmitter.

"It lets you finish leveling off your truck without having to climb down to shut off augers," says Bryon Kittleson, of Welcome, noting that the remote receiver works from up to 150 ft. away.

The heart of the system is a control box that wires into each auger being controlled. It's equipped with motor starters and shut-off controls for each auger. Turning a key on the control box starts the augers simultaneously and it receives the signal from the remote transmitter to shut them down. In addition, the control box can be equipped with a time-delay relay that automatically shuts off the truck fill auger a few seconds after the bin unloading auger shuts off, allowing time for the truck fill auger to clean out.

Time delay can be set for up to 3 minutes, but 10 or 12 seconds is usually adequate.

The control box can be permanently mounted on the bin or used as a portable

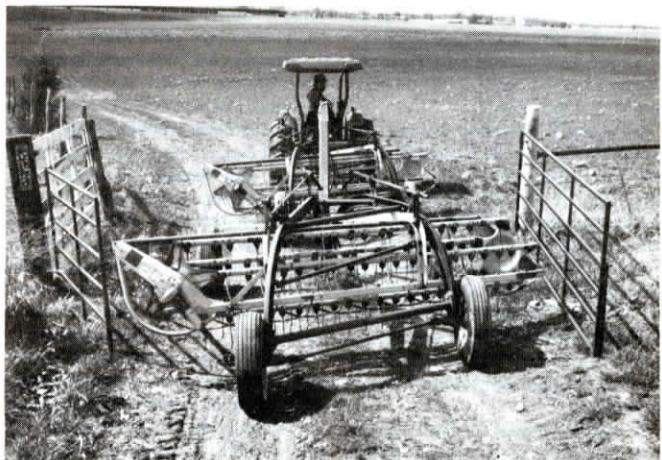


You can shut off up to three augers at a time by pushing a button on the hand-held remote transmitter.

unit. "The key on the control box is a safety feature," says Kittleson. "Removing the key prevents someone from starting the augers while you're around them. Starting all of the augers by turning a single key is also more convenient than having to start them individually."

Sells for \$500 and up depending on number of augers and options.

For more information, contact: FARM SHOW Followup, EZ Kontrols, Box 224, Welcome, Minn. 56181 (ph 507 728-8704).



Rakes line up one behind the other to go through gates or down the road.